

## GAMMA TUBULIN RABBIT MAB

货号: N263341

产品全名: gamma Tubulin 兔单克隆抗体

基因符号 TUBG1; TUBG; Tubulin gamma-1 chain; Gamma-1-tubulin;  
Gamma-tubulin complex component 1; GCP-1

**UNIPROT ID:** P23258

背景: TUBG1 Tubulin is the major constituent of microtubules. Gamma tubulin is found at microtubule organizing centers (MTOC) such as the spindle poles or the centrosome. Pericentriolar matrix component that regulates alpha/beta tubulin minus-end nucleation, centrosome duplication and spindle formation. Interacts with GCP2 and GCP3. Interacts with B9D2. Interacts with CDK5RAP2;

抗原: Recombinant protein of human gamma Tubulin

经过测试的应用: WB,ICC/IF,IP

推荐稀释比: WB: 1/500-1/1000 IF: 1/50-1/200 IP: 1/20

种属反应性: Rabbit

克隆性: Rabbit Monoclonal

克隆编号: R06-6A6

分子量: Calculated MW: 51 kDa; Observed MW: 51 kDa

亚型: IgG

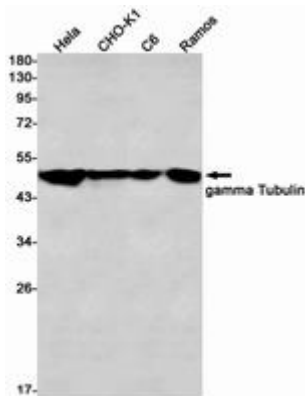
纯化: Affinity Purified

种属反应性: Human, Mouse and Rat,Hamster

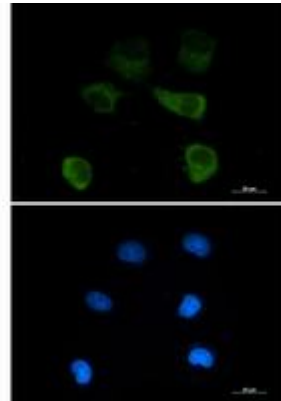
成分: PBS (without Mg<sup>2+</sup> and Ca<sup>2+</sup>), pH 7.3 containing 50% glycerol, 0.5% BSA and 0.02% sodium azide

研究领域: Signal Transduction

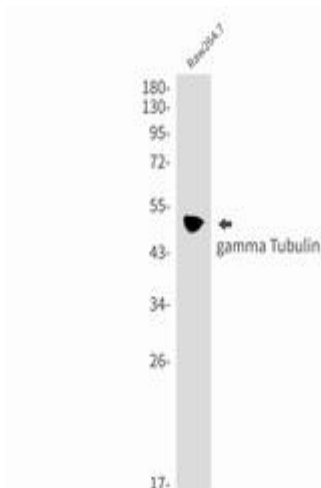
储存和运输: Store at -20°C. Avoid repeated freezing and thawing



Western blot analysis of gamma Tubulin in Hela, CHO-K1, C6, Ramos lysates using gamma Tubulin antibody



Immunocytochemistry analysis of gamma Tubulin (green) in HEPG2 using gamma Tubulin antibody, and DAPI (blue).



Western blot analysis of gamma Tubulin in Raw264.7 lysates using gamma Tubulin antibody.