

## **GAMMA TUBULIN (6A10) MOUSE MAB**

货号: N261329

产品全名: gamma Tubulin (6A10) 小鼠单抗

基因符号 TUBG1; TUBG; Tubulin gamma-1 chain; Gamma-1-tubulin;  
Gamma-tubulin complex component 1; GCP-1

**UNIPROT ID:** P23258

背景: TUBG1 Tubulin is the major constituent of microtubules. Gamma tubulin is found at microtubule organizing centers (MTOC) such as the spindle poles or the centrosome. Pericentriolar matrix component that regulates alpha/beta tubulin minus-end nucleation, centrosome duplication and spindle formation. Interacts with GCP2 and GCP3. Interacts with B9D2. Interacts with CDK5RAP2;

抗原: Synthetic peptide conjugated to KLH.

经过测试的应用: WB,IHC-P

推荐稀释比: WB: 1/500-1/1000 IHC: 1/50-1/100

种属反应性: Mouse

克隆性: Mouse Monoclonal

克隆编号: 6A10-3A10-2A6

分子量: Calculated MW: 51 kDa; Observed MW: 51 kDa

亚型: IgG1

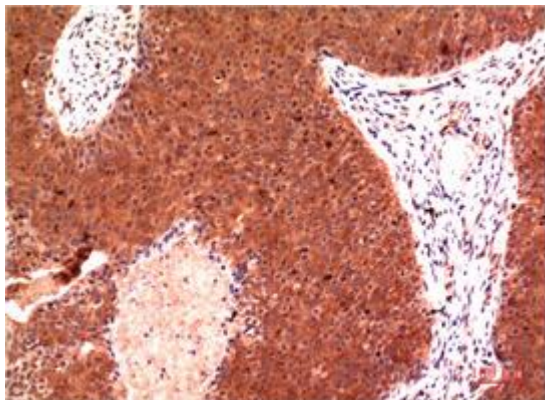
纯化: Affinity Purified

种属反应性: Human,Rat,Mouse

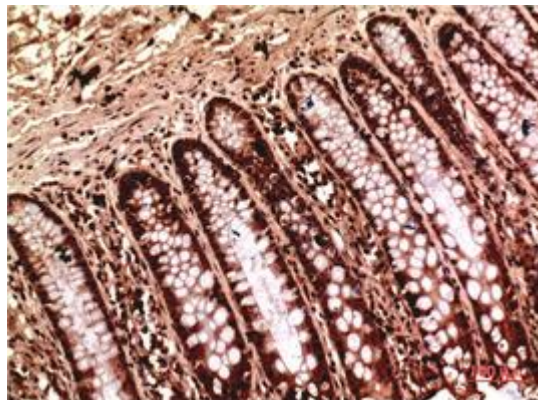
成分: PBS (without Mg<sup>2+</sup> and Ca<sup>2+</sup>), pH 7.3 containing 50% glycerol, 0.5% BSA and 0.02% sodium azide

研究领域: Signal Transduction

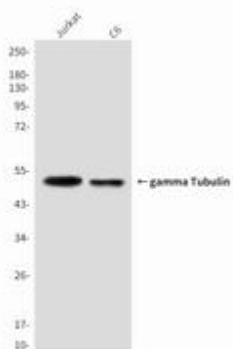
储存和运输: Store at -20°C. Avoid repeated freezing and thawing



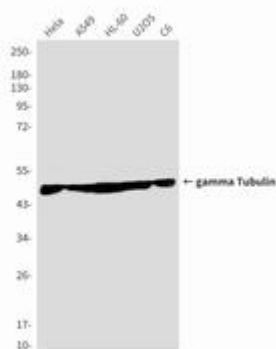
Immunohistochemical analysis of paraffin-embedded Human tonsils using gamma Tubulin (6A10) antibody. High-pressure and temperature Sodium Citrate pH 6.0 was used for antigen retrieval.



Immunohistochemistry analysis of paraffin-embedded Human Colon Carcinoma Tissue using gamma Tubulin (6A10) antibody. High-pressure and temperature Sodium Citrate pH 6.0 was used for antigen retrieval.



Western blot analysis of gamma Tubulin (6A10) in Jurkat, C6 lysates using gamma Tubulin (6A10) antibody



Western blot analysis of gamma Tubulin (6A10) in HeLa, A549, HL-60, U2OS, C6 lysates using gamma Tubulin (6A10) antibody.