

GALR1 RABBIT PAB

货号: S222060

产品全名: GALR1 兔多抗

基因符号: GALNR; GALNRI

UNIPROT ID: P47211 (Gene Accession - NP_001471)

背景: The neuropeptide galanin elicits a range of biological effects by interaction with specific G-protein-coupled receptors. Galanin receptors are seven-transmembrane proteins shown to activate a variety of intracellular second-messenger pathways. GALR1 inhibits adenylyl cyclase via a G protein of the Gi/Go family. GALR1 is widely expressed in the brain and spinal cord, as well as in peripheral sites such as the small intestine and heart.

抗原: Synthetic peptide of human GALR1

经过测试的应用: ELISA, IHC

推荐稀释比: IHC: 50-300; ELISA: 5000-10000

种属反应性: Rabbit

克隆性: Rabbit Polyclonal

亚型: Immunogen-specific rabbit IgG

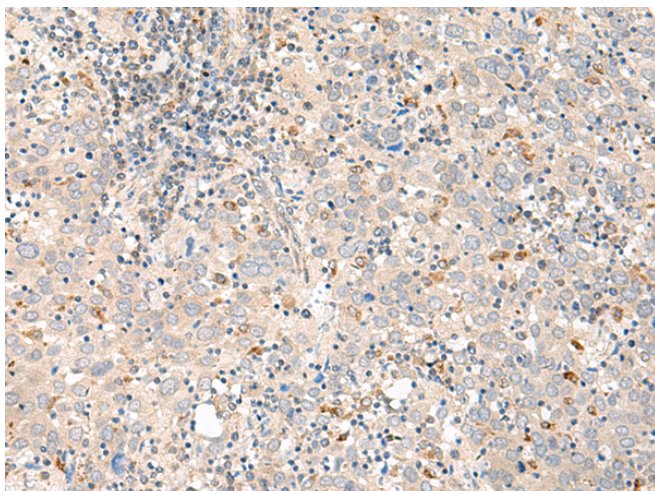
纯化: Antigen affinity purification

种属反应性: Human, Mouse, Rat

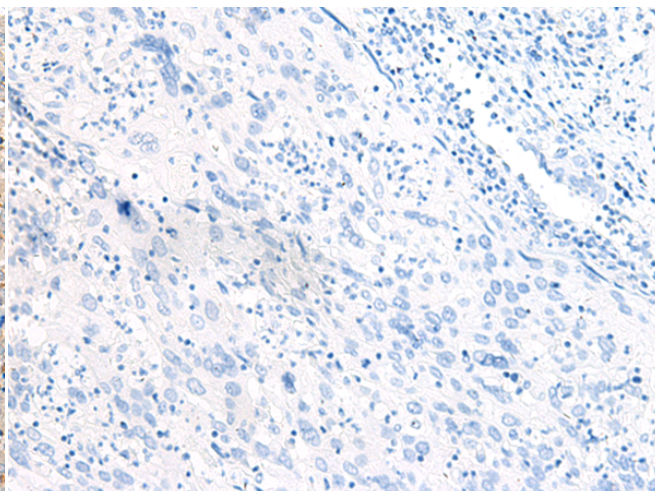
成分: PBS (without Mg²⁺ and Ca²⁺), pH 7.4, 150 mM NaCl, 0.05% Sodium Azide and 40% glycerol

研究领域: Signal Transduction, Neuroscience, Cardiovascular

储存和运输: Store at -20°C. Avoid repeated freezing and thawing



Immunohistochemistry analysis of paraffin embedded Human cervical cancer tissue using 222060(GALR1 Antibody) at a dilution of 1/60(Cell membrane).



In comparison with the IHC on the left, the same paraffin-embedded Human cervical cancer tissue is first treated with the synthetic peptide and then with 222060(Anti-GALR1 Antibody) at dilution 1/60.