

GALM RABBIT PAB

货号: S219336

产品全名: GALM 兔多抗

基因符号: GLAT; IBD1; BLOCK25; HEL-S-63p

UNIPROT ID: Q96C23 (Gene Accession - BC014916)

背景: This gene encodes an enzyme that catalyzes the epimerization of hexose sugars such as glucose and galactose. The encoded protein is expressed in the cytoplasm and has a preference for galactose. The encoded protein may be required for normal galactose metabolism by maintaining the equilibrium of alpha and beta anomers of galactose.

抗原: Fusion protein of human GALM

经过测试的应用: ELISA, WB, IHC

推荐稀释比: IHC: 50-100;WB: 500-2000;ELISA: 5000-10000

种属反应性: Rabbit

克隆性: Rabbit Polyclonal

亚型: Immunogen-specific rabbit IgG

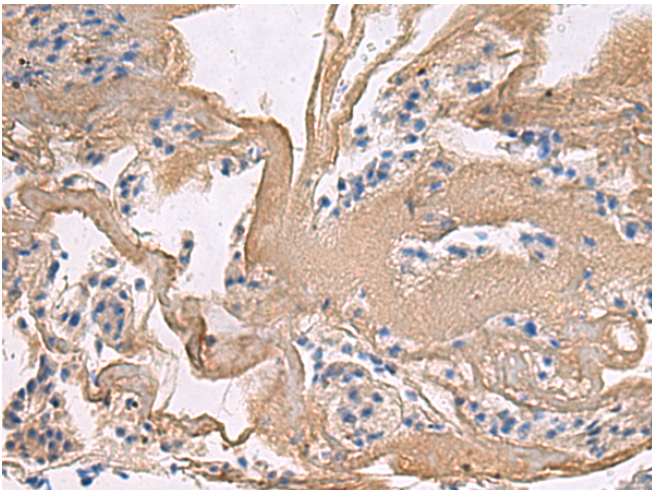
纯化: Antigen affinity purification

种属反应性: Human, Mouse, Rat

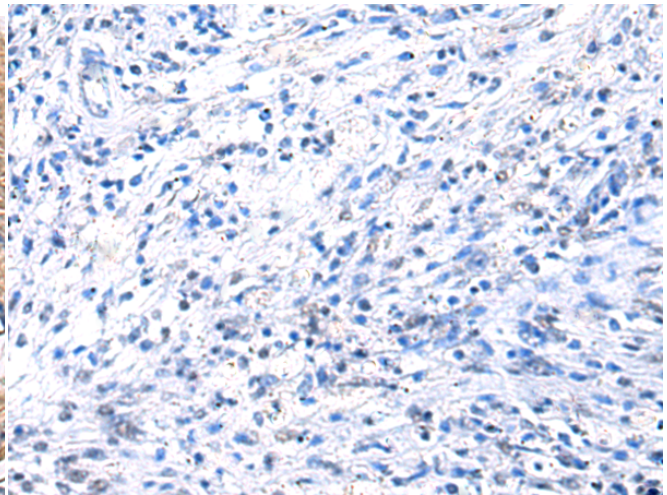
成分: PBS (without Mg²⁺ and Ca²⁺), pH 7.4, 150 mM NaCl, 0.05% Sodium Azide and 40% glycerol

研究领域: Metabolism

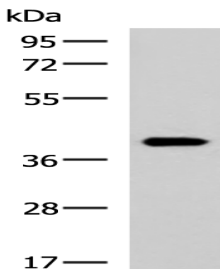
储存和运输: Store at -20°C. Avoid repeated freezing and thawing



Immunohistochemistry analysis of paraffin embedded Human brain tissue using 219336(GALM Antibody) at a dilution of 1/35(Cytoplasm).



In comparison with the IHC on the left, the same paraffin-embedded Human brain tissue is first treated with the fusion protein and then with 219336(Anti-GALM Antibody) at dilution 1/35.



Gel: 8%SDS-PAGE, Lysate: 40 µg;

Lane: Rat kidney tissue lysate;

Primary antibody: 219336(GALM Antibody) at dilution 1/500;

Secondary antibody: HRP-conjugated Goat anti rabbit IgG at 1/5000 dilution;

Exposure time: 10 seconds