

## GALECTIN 3 RABBIT MAB

货号: N262258

产品全名: Galectin 3 兔单克隆抗体

基因符号 LGALS3

**UNIPROT ID:** P17931

**背景:** Galactose-specific lectin which binds IgE. May mediate with the alpha-3, beta-1 integrin the stimulation by CSPG4 of endothelial cells migration. Together with DMBT1, required for terminal differentiation of columnar epithelial cells during early embryogenesis.

**抗原:** Recombinant protein of human Galectin 3

**经过测试的应用:** WB,IHC-F,IHC-P,ICC/IF,IP

**推荐稀释比:** WB: 1/500-1/1000 IHC: 1/50-1/100 IF: 1/50-1/200 IP: 1/20

**种属反应性:** Rabbit

**克隆性:** Rabbit Monoclonal

**克隆编号:** R01-5E1

**分子量:** Calculated MW: 26 kDa; Observed MW: 26 kDa

**亚型:** IgG

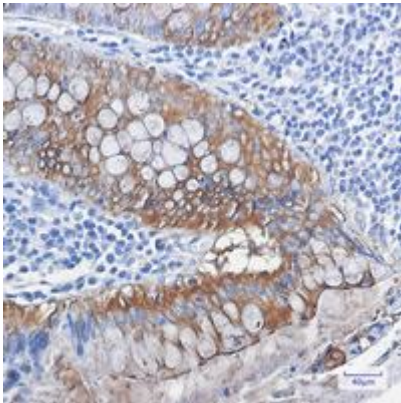
**纯化:** Affinity Purified

**种属反应性:** Human

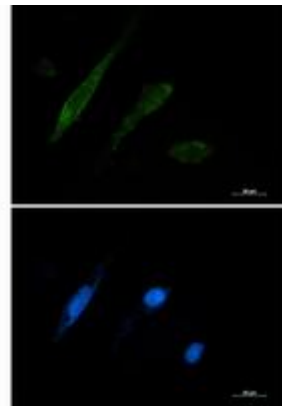
**成分:** PBS (without Mg<sup>2+</sup> and Ca<sup>2+</sup>), pH 7.3 containing 50% glycerol, 0.5% BSA and 0.02% sodium azide

**研究领域:** Neuroscience

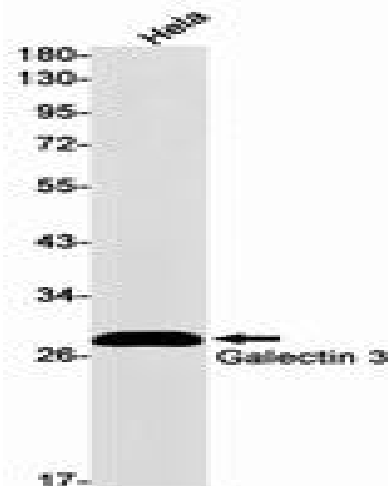
**储存和运输:** Store at -20°C. Avoid repeated freezing and thawing



Immunohistochemistry analysis of paraffin-embedded Human colon cancer tissue using Galectin 3 antibody. High-pressure and temperature Sodium Citrate pH 6.0 was used for antigen retrieval.



Immunocytochemistry analysis of Galectin 3 (green) in U87-MG using Galectin 3 antibody, and DAPI (blue).



Western blot analysis of Galectin 3 in HeLa lysates using Galectin 3 antibody.