

## GALECTIN 3 (4B2) MOUSE MAB

货号: N261209

产品全名: Galectin 3 (4B2) 小鼠单抗

基因符号 LGALS3

UNIPROT ID: P17931

背景: Galactose-specific lectin which binds IgE. May mediate with the alpha-3, beta-1 integrin the stimulation by CSPG4 of endothelial cells migration. Together with DMBT1, required for terminal differentiation of columnar epithelial cells during early embryogenesis.

抗原: Synthetic Peptide of Galectin-3

经过测试的应用: WB,IHC-F,IHC-P,ICC/IF

推荐稀释比: WB: 1/500-1/1000 IHC: 1/50-1/100 IF: 1/50-1/200

种属反应性: Mouse

克隆性: Mouse Monoclonal

克隆编号: 4B2-7G2-8B9

分子量: Calculated MW: 26 kDa; Observed MW: 26 kDa

亚型: IgG1

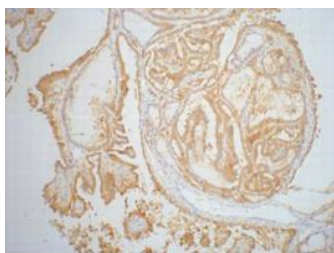
纯化: Affinity Purified

种属反应性: Human,Mouse

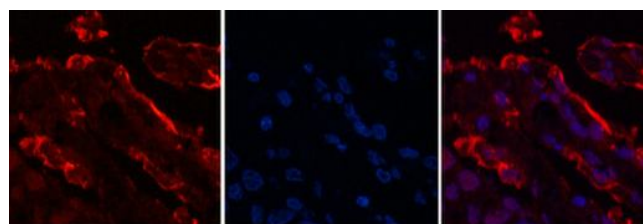
成分: PBS (without Mg<sup>2+</sup> and Ca<sup>2+</sup>), pH 7.3 containing 50% glycerol, 0.5% BSA and 0.02% sodium azide

研究领域: Neuroscience

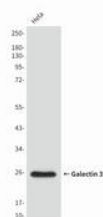
储存和运输: Store at -20°C. Avoid repeated freezing and thawing



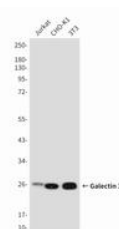
Immunohistochemistry analysis of paraffin-embedded Human thyroid tissue using Galectin 3 (4B2) antibody. High-pressure and temperature Sodium Citrate pH 6.0 was used for antigen retrieval.



Immunofluorescence analysis of Galectin 3 (4B2) in Human lungcancer tissue using Galectin 3 (4B2) antibody (red), and DAPI (blue).



Western blot analysis of Galectin 3 (4B2) in Hela lysates using Galectin 3 (4B2) antibody



Western blot analysis of Galectin 3 (4B2) in Jurkat, CHO-K1, 3T3 lysates using Galectin 3 (4B2) antibody.