

GALECTIN 1 RABBIT PAB

货号: N225914

产品全名: Galectin 1 兔多抗

基因符号 LGALS1; Galectin-1; Gal-1; 14 kDa laminin-binding protein; HLBPI4; 14 kDa lectin; Beta-galactoside-binding lectin L-14-I; Galaptin; HBL; HPL; Lactose-binding lectin 1; Lectin galactoside-binding soluble 1; Putative MAPK-activating protein P

UNIPROT ID: P09382

背景: May regulate apoptosis, cell proliferation and cell differentiation. Binds beta-galactoside and a wide array of complex carbohydrates. Inhibits CD45 protein phosphatase activity and therefore the dephosphorylation of Lyn kinase.

抗原: A synthesized peptide derived from human Galectin 1

经过测试的应用: WB,IHC-P,IP

推荐稀释比: WB: 1/500-1/1000 IHC: 1/50-1/100 IP: 1/20

种属反应性: Rabbit

克隆性: Rabbit Polyclonal

分子量: Calculated MW: 15 kDa; Observed MW: 15 kDa

亚型: IgG

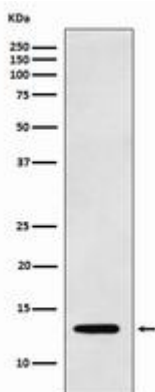
纯化: Affinity Chromatography

种属反应性: Human, Mouse and Rat

成分: PBS (without Mg²⁺ and Ca²⁺), pH 7.3 containing 50% glycerol, 0.5% BSA and 0.02% sodium azide

研究领域: Cell Biology

储存和运输: Store at -20°C. Avoid repeated freezing and thawing



Western blot analysis of Galectin 1 in K562 lysates using Galectin 1 antibody.



Product Description

Pioneering GTPase and Oncogene Product Development since 2010
