

GALACTOSIDASE ALPHA RABBIT MAB

货号: N262254

产品全名: Galactosidase alpha 兔单克隆抗体

基因符号 Alpha gal A; GALA; Galactosidase; alpha; GLA; Melibiase

UNIPROT ID: P06280

背景: Defects in GLA are the cause of Fabry disease (FD) [MIM:301500]. FD is a rare X-linked sphingolipidosis disease where glycolipid accumulates in many tissues. The disease consists of an inborn error of glycosphingolipid catabolism.

抗原: A synthetic peptide of human Galactosidase alpha

经过测试的应用: WB,IHC-P,IP

推荐稀释比: WB: 1/500-1/1000 IHC: 1/50-1/100 IP: 1/20

种属反应性: Rabbit

克隆性: Rabbit Monoclonal

克隆编号: R01-9J4

分子量: Calculated MW: 49 kDa; Observed MW: 49 kDa

亚型: IgG

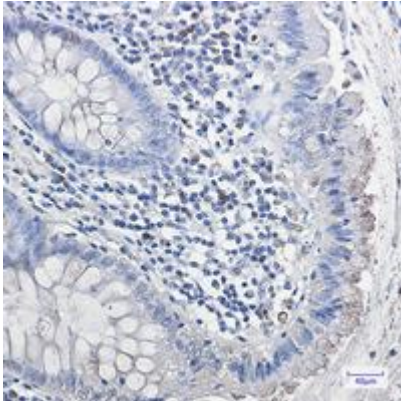
纯化: Affinity Purified

种属反应性: Human

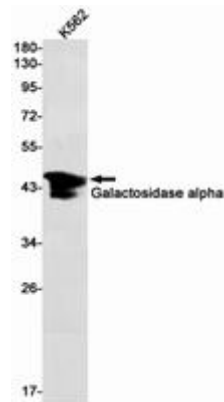
成分: PBS (without Mg²⁺ and Ca²⁺), pH 7.3 containing 50% glycerol, 0.5% BSA and 0.02% sodium azide

研究领域: Cardiovascular

储存和运输: Store at -20°C. Avoid repeated freezing and thawing



Immunohistochemistry analysis of paraffin-embedded Human colon cancer using Galactosidase alpha antibody. High-pressure and temperature Sodium Citrate pH 6.0 was used for antigen retrieval.



Western blot analysis of Galactosidase alpha in K562 lysates using Galactosidase alpha antibody.