

GABRR1 RABBIT PAB

货号: S219794

产品全名: GABRR1 兔多抗

基因符号

UNIPROT ID: P24046 (Gene Accession - NP_002033)

背景: GABA is the major inhibitory neurotransmitter in the mammalian brain where it acts at GABA receptors, which are ligand-gated chloride channels. GABRR1 is a member of the rho subunit family. Several transcript variants encoding different isoforms have been found for this gene.

抗原: Synthetic peptide of human GABRR1

经过测试的应用: ELISA, IHC

推荐稀释比: IHC: 25-50; ELISA: 5000-10000

种属反应性: Rabbit

克隆性: Rabbit Polyclonal

亚型: Immunogen-specific rabbit IgG

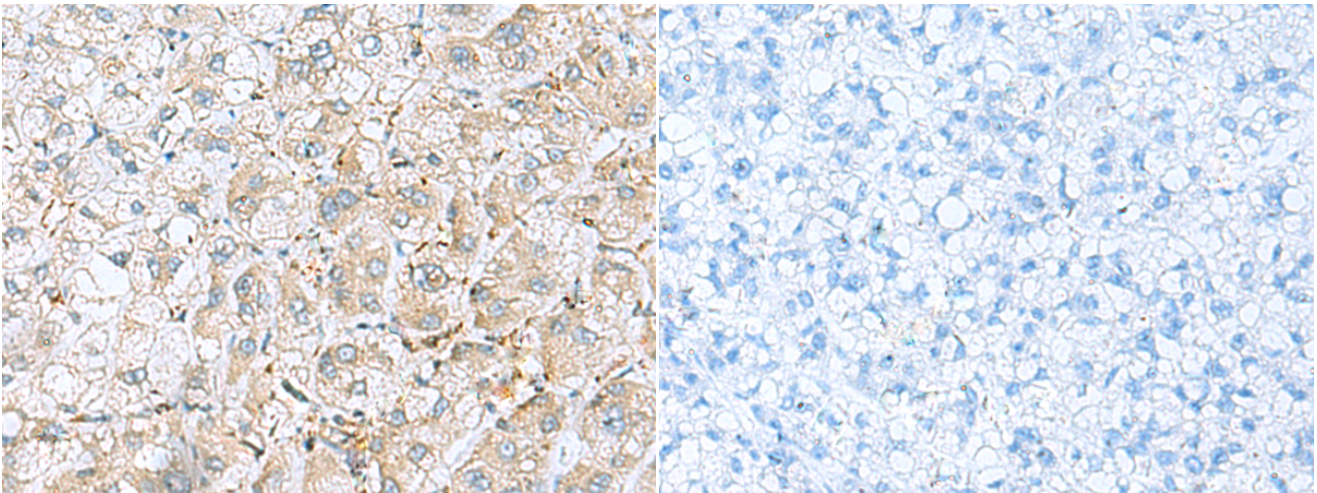
纯化: Antigen affinity purification

种属反应性: Human, Mouse, Rat

成分: PBS (without Mg²⁺ and Ca²⁺), pH 7.4, 150 mM NaCl, 0.05% Sodium Azide and 40% glycerol

研究领域: Neuroscience

储存和运输: Store at -20°C. Avoid repeated freezing and thawing



Immunohistochemistry analysis of paraffin embedded Human liver cancer tissue using 219794(GABRR1 Antibody) at a dilution of 1/35(Cell membrane). In comparison with the IHC on the left, the same paraffin-embedded Human liver cancer tissue is first treated with the synthetic peptide and then with 219794(Anti-GABRR1 Antibody) at dilution 1/35.