

GABPB1 RABBIT PAB

货号: S222057

产品全名: GABPB1 兔多抗

基因符号 E4TF1; GABPB; BABPB2; E4TF1B; GABPB2; NRF2B1; NRF2B2; GABPB-1; E4TF1-47; E4TF1-53

UNIPROT ID: Q06547 (Gene Accession - NP_005245)

背景: This gene encodes the GA-binding protein transcription factor, beta subunit. This protein forms a tetrameric complex with the alpha subunit, and stimulates transcription of target genes. The encoded protein may be involved in activation of cytochrome oxidase expression and nuclear control of mitochondrial function. The crystal structure of a similar protein in mouse has been resolved as a ternary protein complex. Multiple transcript variants encoding distinct isoforms have been identified for this gene.

抗原: Synthetic peptide of human GABPB1

经过测试的应用: ELISA, WB, IHC

推荐稀释比: IHC: 50-100;WB: 200-1000;ELISA: 5000-10000

种属反应性: Rabbit

克隆性: Rabbit Polyclonal

亚型: Immunogen-specific rabbit IgG

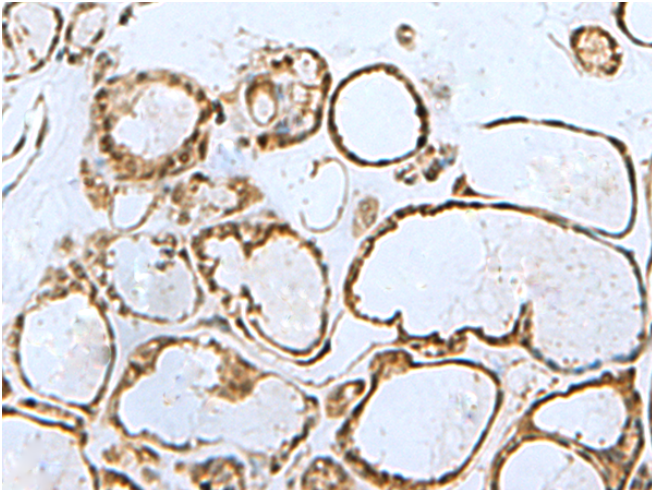
纯化: Antigen affinity purification

种属反应性: Human, Mouse

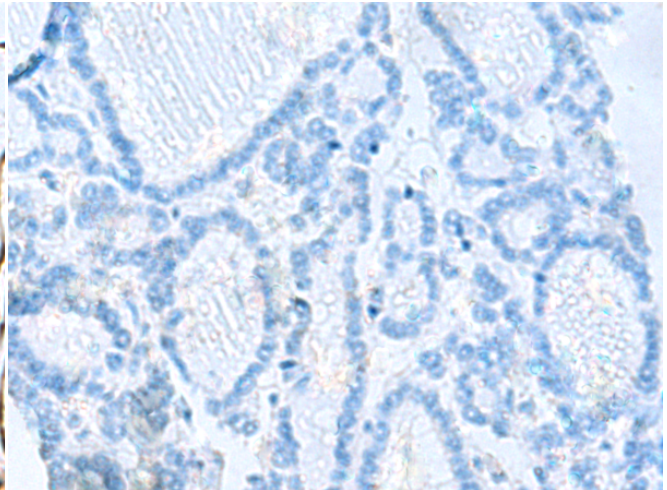
成分: PBS (without Mg²⁺ and Ca²⁺), pH 7.4, 150 mM NaCl, 0.05% Sodium Azide and 40% glycerol

研究领域: Epigenetics and Nuclear Signaling

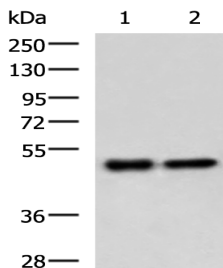
储存和运输: Store at -20°C. Avoid repeated freezing and thawing



Immunohistochemistry analysis of paraffin embedded Human thyroid cancer tissue using 222057(GABPB1 Antibody) at a dilution of 1/30(Nucleus).



In comparison with the IHC on the left, the same paraffin-embedded Human thyroid cancer tissue is first treated with the synthetic peptide and then with 222057(Anti-GABPB1 Antibody) at dilution 1/30.



Gel: 8%SDS-PAGE, Lysate: 40 µg;

Lane 1-2: Jurkat cell and Mouse thymus tissue lysates;

Primary antibody: 222057(GABPB1 Antibody) at dilution 1/300;

Secondary antibody: HRP-conjugated Goat anti rabbit IgG at 1/5000 dilution;

Exposure time: 30 seconds