

FZD2 RABBIT PAB

货号: S213774

产品全名: FZD2 兔多抗

基因符号: Fz2; fz-2; fzE2; hFz2

UNIPROT ID: Q14332 (Gene Accession - NP_001457.1)

背景: This intronless gene is a member of the frizzled gene family. Members of this family encode seven-transmembrane domain proteins that are receptors for the wntless type MMTV integration site family of signaling proteins. This gene encodes a protein that is coupled to the beta-catenin canonical signaling pathway. Competition between the wntless-type MMTV integration site family, member 3A and wntless-type MMTV integration site family, member 5A gene products for binding of this protein is thought to regulate the beta-catenin-dependent and -independent pathways.

抗原: Synthetic peptide of human FZD2

经过测试的应用: ELISA, IHC

推荐稀释比: IHC: 25-100; ELISA: 1000-5000

种属反应性: Rabbit

克隆性: Rabbit Polyclonal

亚型: Immunogen-specific rabbit IgG

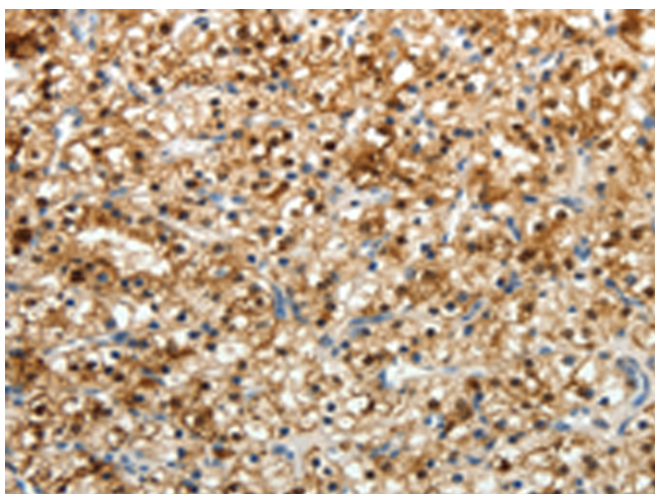
纯化: Antigen affinity purification

种属反应性: Human, Mouse, Rat

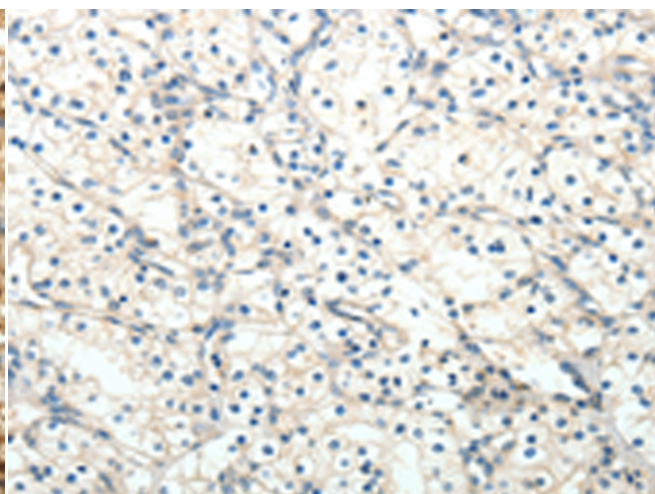
成分: PBS (without Mg²⁺ and Ca²⁺), pH 7.4, 150 mM NaCl, 0.05% Sodium Azide and 40% glycerol

研究领域: Signal Transduction

储存和运输: Store at -20°C. Avoid repeated freezing and thawing



Immunohistochemistry analysis of paraffin embedded Human renal cancer tissue using 213774(FZD2 Antibody) at a dilution of 1/25(Cytoplasm, Cell membrane).



In comparison with the IHC on the left, the same paraffin-embedded Human renal cancer tissue is first treated with the synthetic peptide and then with 213774(Anti-FZD2 Antibody) at dilution 1/25.