

## FYCO1 RABBIT PAB

货号: S219292

产品全名: FYCO1 兔多抗

基因符号: CATC2; RUFY3; ZFYVE7; CTRCT18

**UNIPROT ID:** Q9BQS8 (Gene Accession - BC007218 )

**背景:** This gene encodes a protein that contains a RUN domain, FYVE-type zinc finger domain and Golgi dynamics (GOLD) domain. The encoded protein plays a role in microtubule plus end-directed transport of autophagic vesicles through interactions with the small GTPase Rab7, phosphatidylinositol-3-phosphate (PI3P) and the autophagosome marker LC3. Mutations in this gene are a cause of autosomal recessive congenital cataract-2 (CATC2).

**抗原:** Fusion protein of human FYCO1

**经过测试的应用:** ELISA, IHC

**推荐稀释比:** IHC: 100-200; ELISA: 5000-10000

**种属反应性:** Rabbit

**克隆性:** Rabbit Polyclonal

**亚型:** Immunogen-specific rabbit IgG

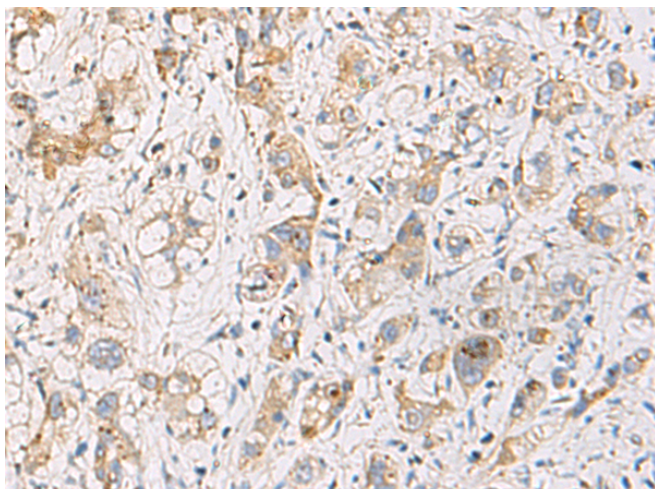
**纯化:** Antigen affinity purification

**种属反应性:** Human

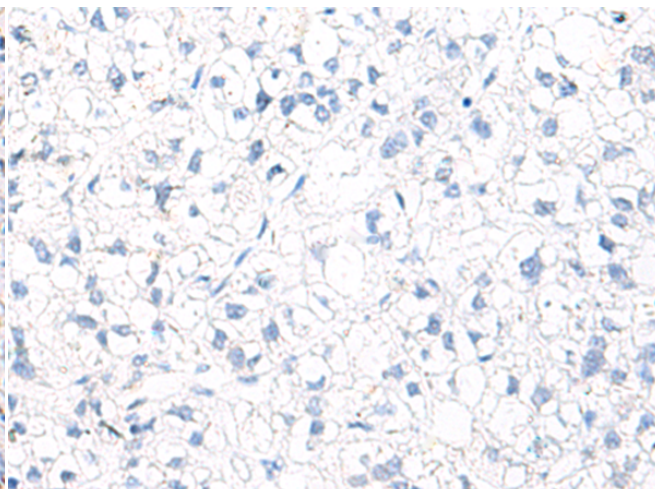
**成分:** PBS (without Mg<sup>2+</sup> and Ca<sup>2+</sup>), pH 7.4, 150 mM NaCl, 0.05% Sodium Azide and 40% glycerol

**研究领域:** Epigenetics and Nuclear Signaling

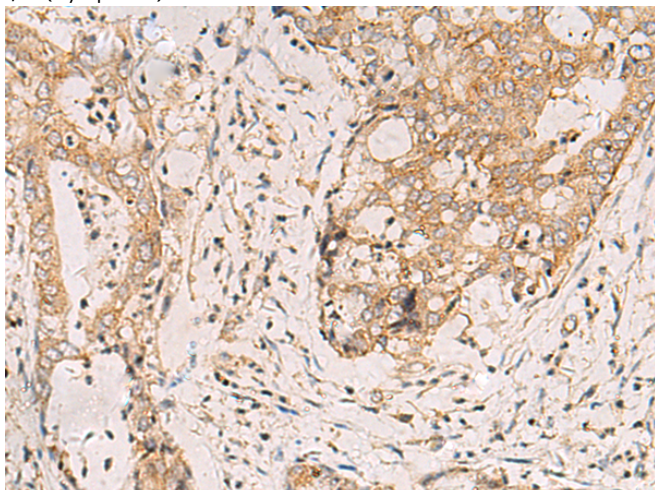
**储存和运输:** Store at -20°C. Avoid repeated freezing and thawing



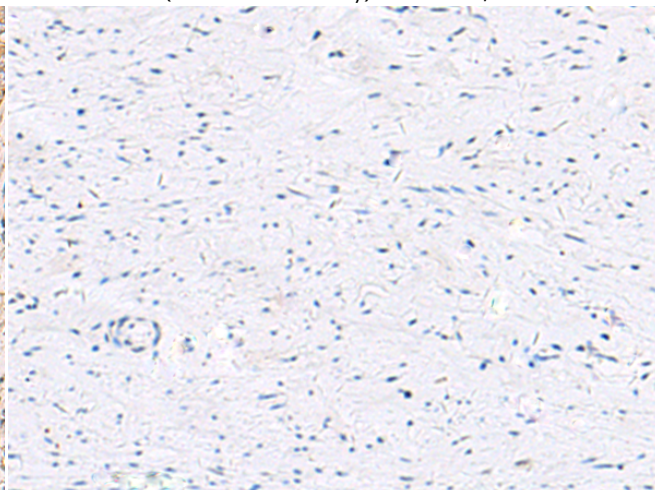
Immunohistochemistry analysis of paraffin embedded Human liver cancer tissue using 219292(FYCO1 Antibody) at a dilution of 1/110(Cytoplasm).



In comparison with the IHC on the left, the same paraffin-embedded Human liver cancer tissue is first treated with the fusion protein and then with 219292(Anti-FYCO1 Antibody) at dilution 1/110.



The image on the left is immunohistochemistry of paraffin-embedded Human cervical cancer tissue using 219292(Anti-FYCO1 Antibody) at a dilution of 1/110.



In comparison with the IHC on the left, the same paraffin-embedded Human cervical cancer tissue is first treated with fusion protein and then with D226224(Anti-FYCO1 Antibody) at dilution 1/110.



# Product Description

Pioneering GTPase and Oncogene Product Development since 2010

---