

FXR2 RABBIT PAB

货号: S218766

产品全名: FXR2 兔多抗

基因符号: FXR2P; FMRIL2

UNIPROT ID: P51116 (Gene Accession - BC020090)

背景: The protein encoded by this gene is a RNA binding protein containing two KH domains and one RCG box which is similar to FMRP and FXR1. It associates with polyribosomes, predominantly with 60S large ribosomal subunits. This encoded protein may self-associate or interact with FMRP and FXR1. It may have a role in the development of fragile X mental retardation syndrome.

抗原: Fusion protein of human FXR2

经过测试的应用: ELISA, WB, IHC

推荐稀释比: IHC: 25-100; WB: 500-2000; ELISA: 5000-10000

种属反应性: Rabbit

克隆性: Rabbit Polyclonal

亚型: Immunogen-specific rabbit IgG

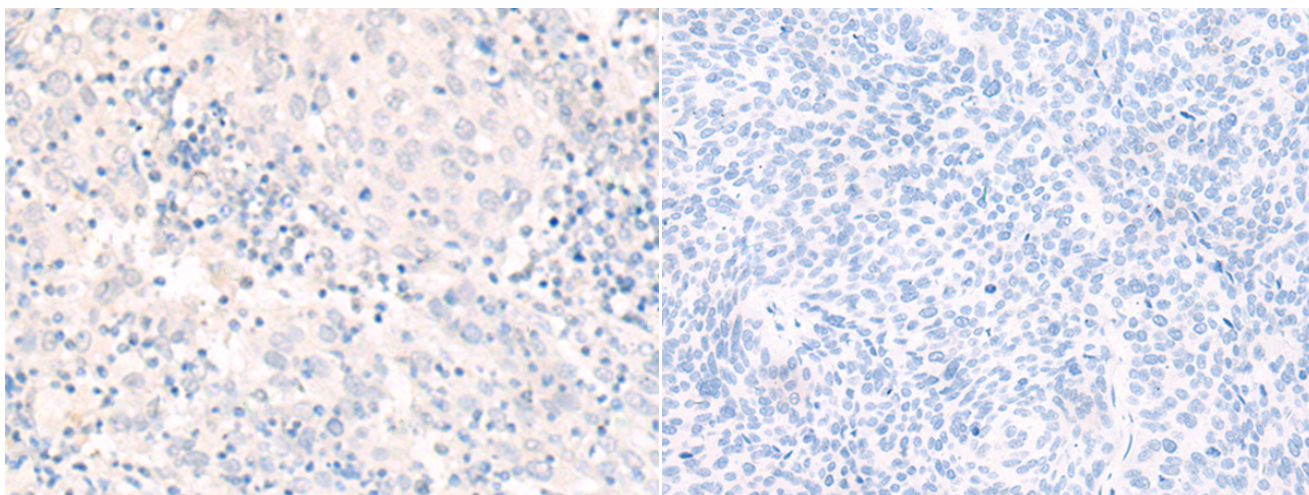
纯化: Antigen affinity purification

种属反应性: Human, Mouse

成分: PBS (without Mg²⁺ and Ca²⁺), pH 7.4, 150 mM NaCl, 0.05% Sodium Azide and 40% glycerol

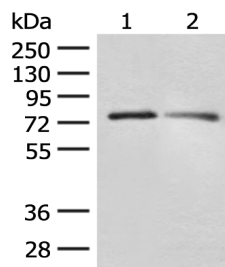
研究领域: Epigenetics and Nuclear Signaling, Neuroscience

储存和运输: Store at -20°C. Avoid repeated freezing and thawing



Immunohistochemistry analysis of paraffin embedded Human cervical cancer tissue using 218766(FXR2 Antibody) at a dilution of 1/20(Cytoplasm).

In comparison with the IHC on the left, the same paraffin-embedded Human cervical cancer tissue is first treated with the fusion protein and then with 218766(Anti-FXR2 Antibody) at dilution 1/20.



Gel: 8%SDS-PAGE, Lysate: 40 µg;

Lane 1-2: RAW264.7 cell and Mouse kidney tissue lysates;

Primary antibody: 218766(FXR2 Antibody) at dilution 1/300;

Secondary antibody: Goat anti rabbit IgG at 1/8000 dilution;

Exposure time: 1 minute