

FUT1 RABBIT PAB

货号: S220559

产品全名: FUT1 兔多抗

基因符号: H; HH; HSC

UNIPROT ID: P19526 (Gene Accession - NP_000139)

背景: This gene encodes a Golgi stack membrane protein that is involved in the creation of a precursor of the H antigen, which is required for the final step in the synthesis of soluble A and B antigens. This is one of two genes encoding the galactoside 2-L-fucosyltransferase enzyme. Mutations in this gene are a cause of the H-Bombay blood group.

抗原: Synthetic peptide of human FUT1

经过测试的应用: ELISA, WB, IHC

推荐稀释比: IHC: 50-100;WB: 500-2000;ELISA: 5000-10000

种属反应性: Rabbit

克隆性: Rabbit Polyclonal

亚型: Immunogen-specific rabbit IgG

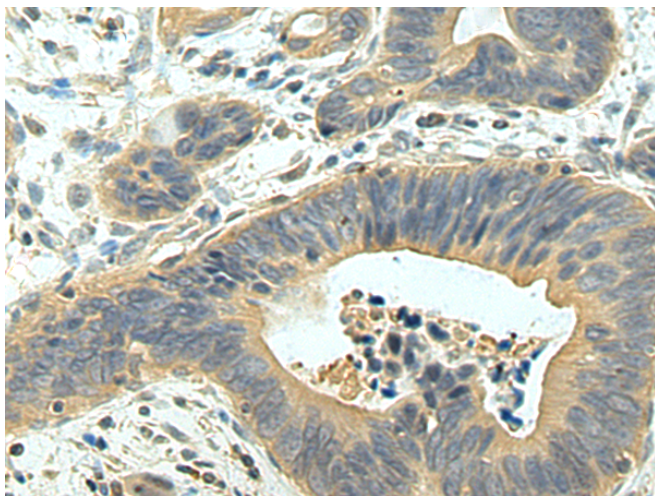
纯化: Antigen affinity purification

种属反应性: Human

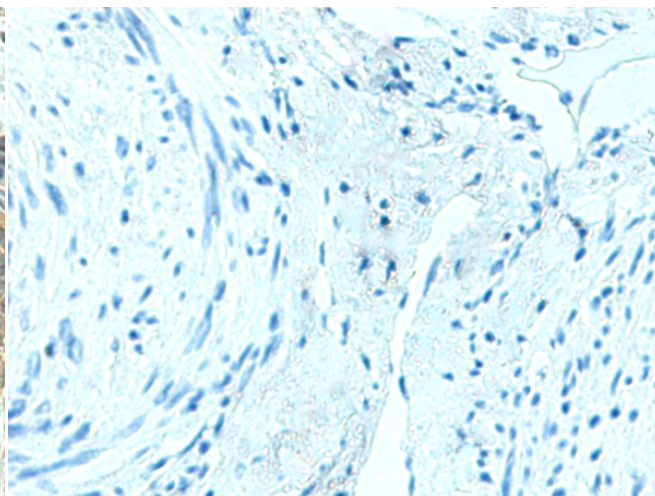
成分: PBS (without Mg²⁺ and Ca²⁺), pH 7.4, 150 mM NaCl, 0.05% Sodium Azide and 40% glycerol

研究领域: Cardiovascular

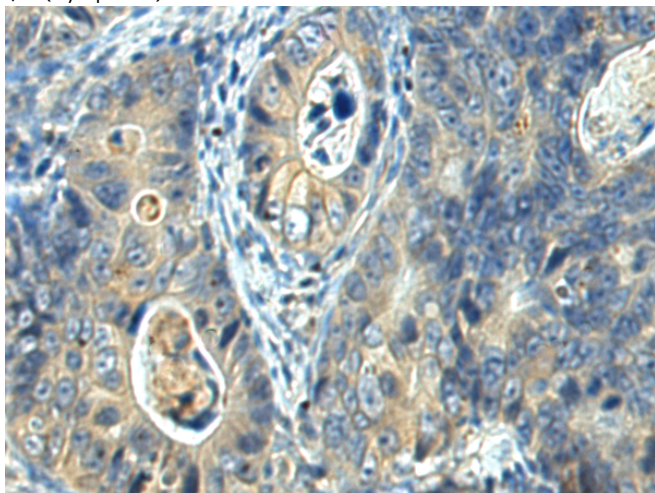
储存和运输: Store at -20°C. Avoid repeated freezing and thawing



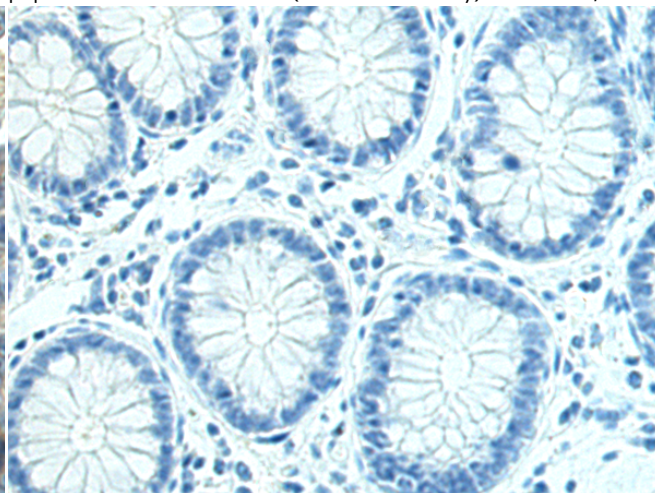
Immunohistochemistry analysis of paraffin embedded Human cervical cancer tissue using 220559(FUT1 Antibody) at a dilution of 1/35(Cytoplasm).



In comparison with the IHC on the left, the same paraffin-embedded Human cervical cancer tissue is first treated with the synthetic peptide and then with 220559(Anti-FUT1 Antibody) at dilution 1/35.

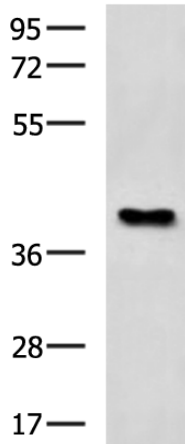


The image on the left is immunohistochemistry of paraffin-embedded Human colorectal cancer tissue using 220559(Anti-FUT1 Antibody) at a dilution of 1/35.



In comparison with the IHC on the left, the same paraffin-embedded Human colorectal cancer tissue is first treated with synthetic peptide and then with D261692(Anti-FUT1 Antibody) at dilution 1/35.

kDa



Gel: 8%SDS-PAGE, Lysate: 40 µg;
 Lane: Raji cell lysate;
 Primary antibody: 220559(FUT1 Antibody) at dilution 1/800;
 Secondary antibody: HRP-conjugated Goat anti rabbit IgG at 1/5000 dilution;
 Exposure time: 1 minute



Product Description

Pioneering GTPase and Oncogene Product Development since 2010
