

## FSHR RABBIT PAB

货号: N225365

产品全名: FSHR 兔多抗

基因符号 FSHR; LGRI; Follicle-stimulating hormone receptor; FSH-R; Follitropin receptor

**UNIPROT ID:** P23945

**背景:** The protein encoded by this gene belongs to family 1 of G-protein coupled receptors. It is the receptor for follicle stimulating hormone and functions in gonad development. Mutations in this gene cause ovarian dysgenesis type 1, and also ovarian hyperstimulation syndrome. Alternative splicing results in multiple transcript variants.

**抗原:** KLH coupled human protein peptide 120-200 Interacts with ARRB2.

**经过测试的应用:** WB, ICC/IF, ELISA

**推荐稀释比:** WB: 1/500-1/1000 IF: 1/50-1/200 ELISA: 1/10000

**种属反应性:** Rabbit

**克隆性:** Rabbit Polyclonal

**分子量:** Calculated MW: 78 kDa; Observed MW: 78 kDa

**亚型:** IgG

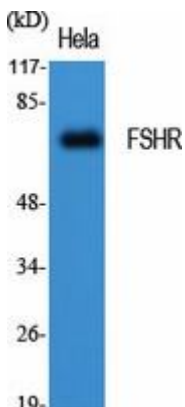
**纯化:** Affinity Purified

**种属反应性:** Human, Mouse and Rat

**成分:** PBS (without Mg<sup>2+</sup> and Ca<sup>2+</sup>), pH 7.3 containing 50% glycerol, 0.5% BSA and 0.02% sodium azide

**研究领域:** Neuroscience

**储存和运输:** Store at -20°C. Avoid repeated freezing and thawing



Western blot analysis of FSHR in HeLa lysates using FSHR antibody.



# Product Description

Pioneering GTPase and Oncogene Product Development since 2010

---