

FSCB RABBIT PAB

货号: S218918

产品全名: FSCB 兔多抗

基因符号: C14orf155

UNIPROT ID: Q5H9T9 (Gene Accession - BC039878)

背景: May be involved in the later stages of fibrous sheath biogenesis and spermatozoa capacitation. Inhibits ROPN1 and ROPN1L SUMOylation. Binds calcium.

抗原: Fusion protein of human FSCB

经过测试的应用: ELISA, IHC

推荐稀释比: IHC: 50-200; ELISA: 5000-10000

种属反应性: Rabbit

克隆性: Rabbit Polyclonal

亚型: Immunogen-specific rabbit IgG

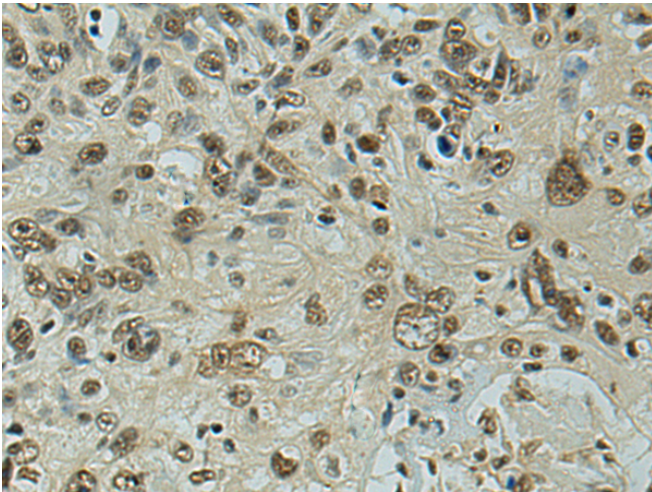
纯化: Antigen affinity purification

种属反应性: Human

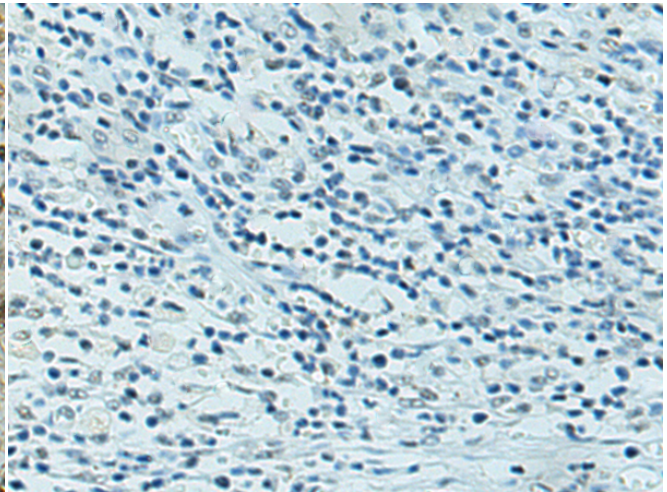
成分: PBS (without Mg²⁺ and Ca²⁺), pH 7.4, 150 mM NaCl, 0.05% Sodium Azide and 40% glycerol

研究领域: Signal Transduction

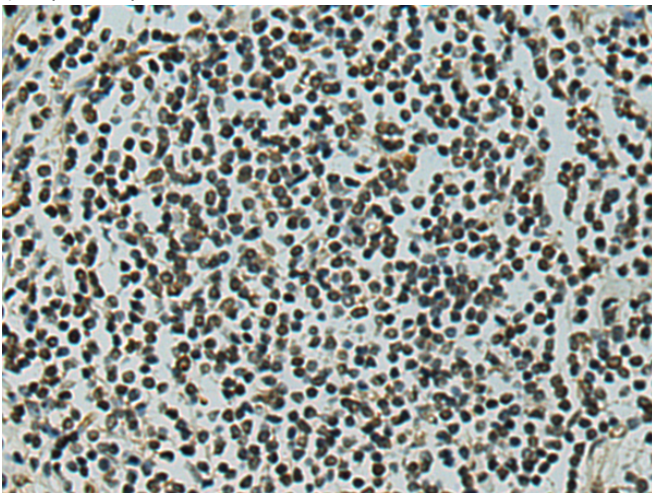
储存和运输: Store at -20°C. Avoid repeated freezing and thawing



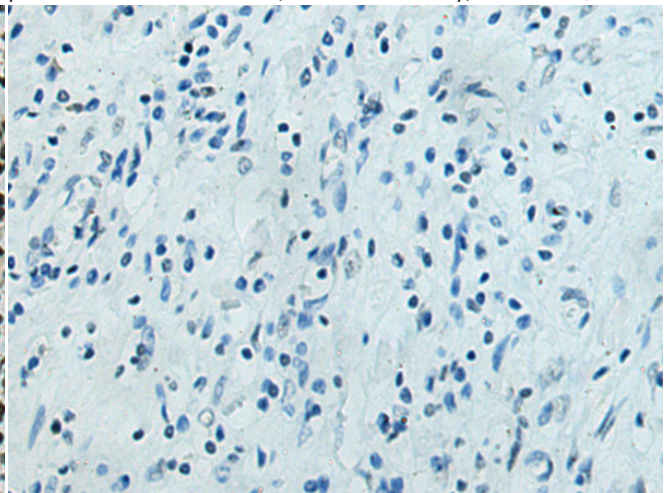
Immunohistochemistry analysis of paraffin embedded Human esophagus cancer tissue using 218918(FSCB Antibody) at a dilution of 1/100(Nucleus).



In comparison with the IHC on the left, the same paraffin-embedded Human esophagus cancer tissue is first treated with the fusion protein and then with 218918(Anti-FSCB Antibody) at dilution 1/100.



The image on the left is immunohistochemistry of paraffin-embedded Human colorectal cancer tissue using 218918(Anti-FSCB Antibody) at a dilution of 1/100.



In comparison with the IHC on the left, the same paraffin-embedded Human colorectal cancer tissue is first treated with fusion protein and then with D225511(Anti-FSCB Antibody) at dilution 1/100.



Product Description

Pioneering GTPase and Oncogene Product Development since 2010
