

FRUCTOSE 6 PHOSPHATE KINASE RABBIT MAB

货号: N261615

产品全名: Fructose 6 Phosphate Kinase 兔单克隆抗体

基因符号 GSD7; PFK1; PFKA; PFKX; PFK-1; Phosphohexokinase

UNIPROT ID: P08237

背景: Carbohydrate degradation; glycolysis; D-glyceraldehyde 3-phosphate and glycerone phosphate from D-glucose: step 3/4.

抗原: A synthetic peptide of human Fructose 6 Phosphate Kinase

经过测试的应用: WB, ICC/IF

推荐稀释比: WB: 1/500-1/1000 IF: 1/50-1/200

种属反应性: Rabbit

克隆性: Rabbit Monoclonal

克隆编号: R08-6B4

分子量: Calculated MW: 85 kDa; Observed MW: 85 kDa

亚型: IgG

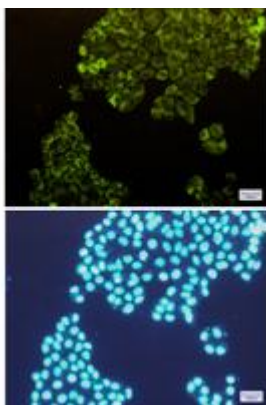
纯化: Affinity Purified

种属反应性: Human, Mouse and Rat

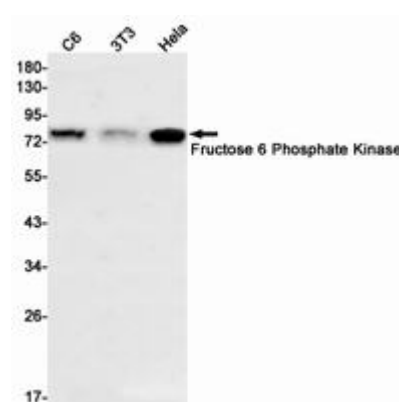
成分: PBS (without Mg²⁺ and Ca²⁺), pH 7.3 containing 50% glycerol, 0.5% BSA and 0.02% sodium azide

研究领域: Signal Transduction

储存和运输: Store at -20°C. Avoid repeated freezing and thawing



Immunocytochemistry analysis of Fructose 6 Phosphate Kinase (green) in HeLa using Fructose 6 Phosphate Kinase antibody, and DAPI (blue)



Western blot analysis of Fructose 6 Phosphate Kinase in C6, 3T3, HeLa lysates using Fructose 6 Phosphate Kinase antibody.



Product Description

Pioneering GTPase and Oncogene Product Development since 2010
