

FRMD5 RABBIT PAB

货号: S219432

产品全名: FRMD5 兔多抗

基因符号

UNIPROT ID: Q7Z6J6 (Gene Accession - BC053647)

背景: May be involved in regulation of cell migration (PubMed:22846708, PubMed:25448675). May regulate cell-matrix interactions via its interaction with ITGB5 and modifying ITGB5 cytoplasmic tail interactions such as with FERMT2 and TLN1. May regulate ROCK1 kinase activity possibly involved in regulation of actin stress fiber formation (PubMed:25448675).

抗原: Fusion protein of human FRMD5

经过测试的应用: ELISA, WB, IHC

推荐稀释比: IHC: 150-300;WB: 500-2000;ELISA: 5000-10000

种属反应性: Rabbit

克隆性: Rabbit Polyclonal

亚型: Immunogen-specific rabbit IgG

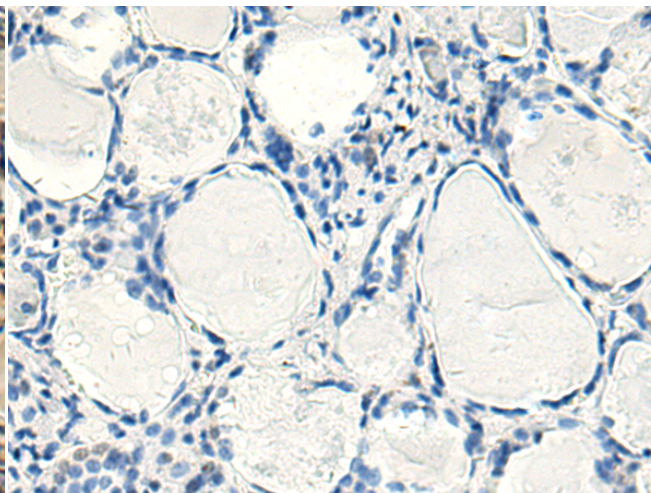
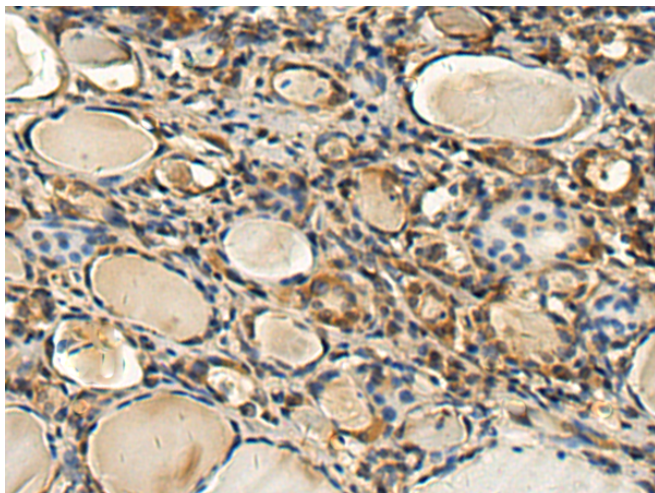
纯化: Antigen affinity purification

种属反应性: Human, Mouse

成分: PBS (without Mg²⁺ and Ca²⁺), pH 7.4, 150 mM NaCl, 0.05% Sodium Azide and 40% glycerol

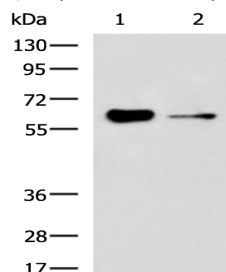
研究领域: Cell Biology

储存和运输: Store at -20°C. Avoid repeated freezing and thawing



Immunohistochemistry analysis of paraffin embedded Human thyroid cancer tissue using 219432 (FRMD5 Antibody) at a dilution of 1/160 (Cell membrane).

In comparison with the IHC on the left, the same paraffin-embedded Human thyroid cancer tissue is first treated with the fusion protein and then with 219432 (Anti-FRMD5 Antibody) at dilution 1/160.



Gel: 8%SDS-PAGE, Lysate: 40 µg;

Lane 1-2: HUVEC cell, Mouse kidney tissue lysates;

Primary antibody: 219432 (FRMD5 Antibody) at dilution 1/1000;

Secondary antibody: HRP-conjugated Goat anti rabbit IgG at 1/5000 dilution;

Exposure time: 3 minutes