

FRG1 RABBIT PAB

货号: S219430

产品全名: FRG1 兔多抗

基因符号: FSG1; FRG1A

UNIPROT ID: Q14331 (Gene Accession - BC053997)

背景: This gene maps to a location 100 kb centromeric of the repeat units on chromosome 4q35 which are deleted in facioscapulohumeral muscular dystrophy (FSHD). It is evolutionarily conserved and has related sequences on multiple human chromosomes but DNA sequence analysis did not reveal any homology to known genes. In vivo studies demonstrate the encoded protein is localized to the nucleolus. [provided by RefSeq, Jul 2008]

抗原: Fusion protein of human FRG1

经过测试的应用: ELISA, IHC

推荐稀释比: IHC: 100-300; ELISA: 5000-10000

种属反应性: Rabbit

克隆性: Rabbit Polyclonal

亚型: Immunogen-specific rabbit IgG

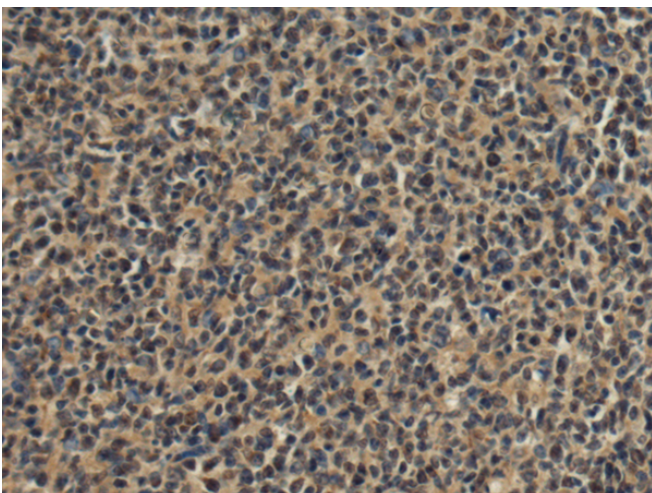
纯化: Antigen affinity purification

种属反应性: Human, Mouse

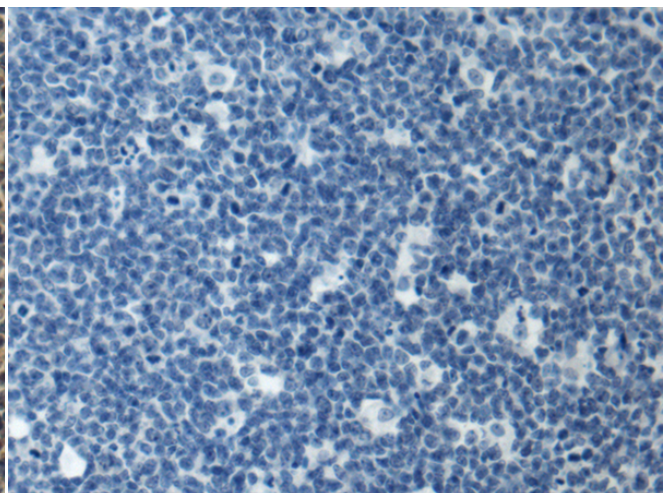
成分: PBS (without Mg²⁺ and Ca²⁺), pH 7.4, 150 mM NaCl, 0.05% Sodium Azide and 40% glycerol

研究领域: Epigenetics and Nuclear Signaling

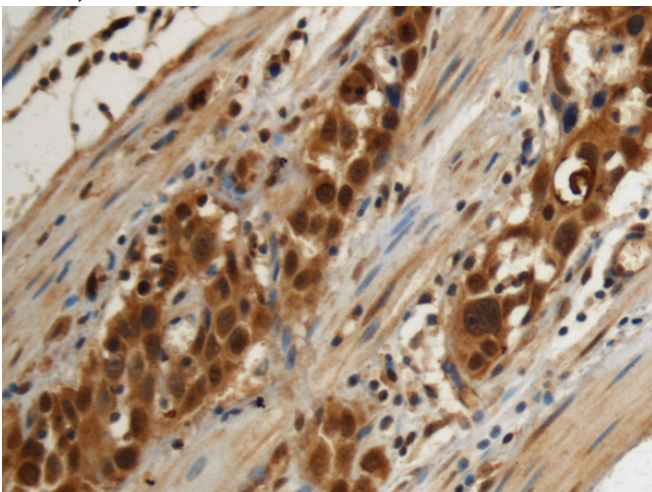
储存和运输: Store at -20°C. Avoid repeated freezing and thawing



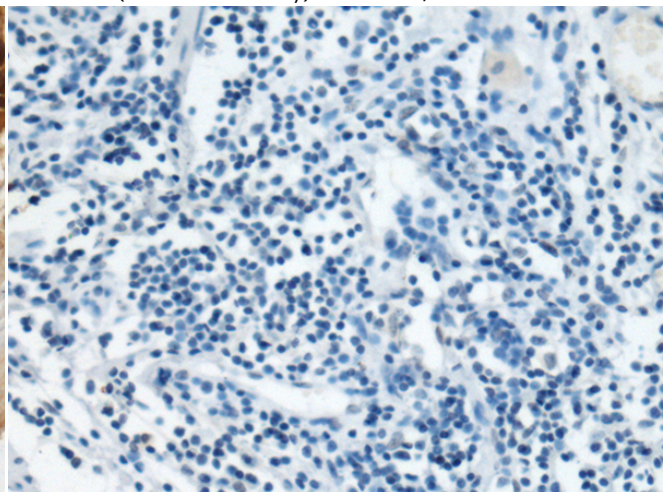
Immunohistochemistry analysis of paraffin embedded Human tonsil tissue using 219430(FRG1 Antibody) at a dilution of 1/90(Cytoplasm or Nucleus).



In comparison with the IHC on the left, the same paraffin-embedded Human tonsil tissue is first treated with the fusion protein and then with 219430(Anti-FRG1 Antibody) at dilution 1/90.



The image on the left is immunohistochemistry of paraffin-embedded Human esophagus cancer tissue using 219430(Anti-FRG1 Antibody) at a dilution of 1/90.



In comparison with the IHC on the left, the same paraffin-embedded Human esophagus cancer tissue is first treated with fusion protein and then with D226938(Anti-FRG1 Antibody) at dilution 1/90.



Product Description

Pioneering GTPase and Oncogene Product Development since 2010
