

FOXQ1 RABBIT PAB

货号: S222048

产品全名: FOXQ1 兔多抗

基因符号: HFH1

UNIPROT ID: Q9C009 (Gene Accession - NP_150285)

背景: FOXQ1 is a member of the FOX gene family, which is characterized by a conserved 110-amino acid DNA-binding motif called the forkhead or winged helix domain. FOX genes are involved in embryonic development, cell cycle regulation, tissue-specific gene expression, cell signaling, and tumorigenesis (Bieller et al., 2001 [PubMed 11747606]).

抗原: Synthetic peptide of human FOXQ1

经过测试的应用: ELISA, WB, IHC

推荐稀释比: IHC: 25-50;WB: 500-2000;ELISA: 5000-10000

种属反应性: Rabbit

克隆性: Rabbit Polyclonal

亚型: Immunogen-specific rabbit IgG

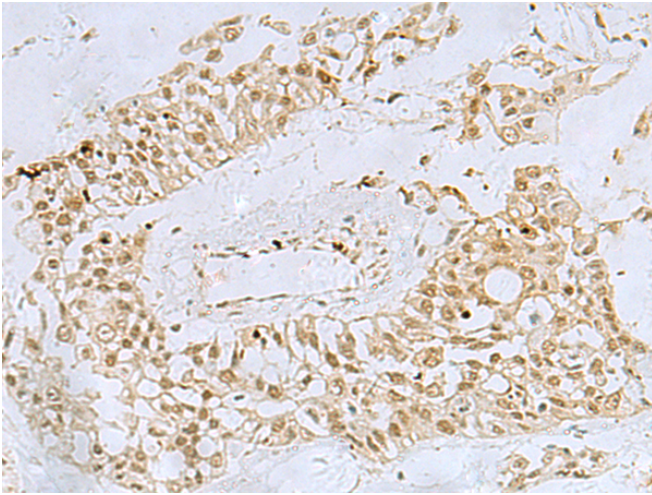
纯化: Antigen affinity purification

种属反应性: Human

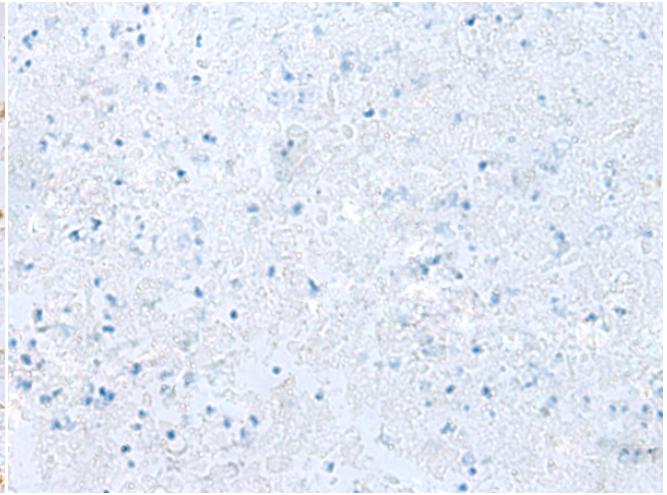
成分: PBS (without Mg²⁺ and Ca²⁺), pH 7.4, 150 mM NaCl, 0.05% Sodium Azide and 40% glycerol

研究领域: Epigenetics and Nuclear Signaling

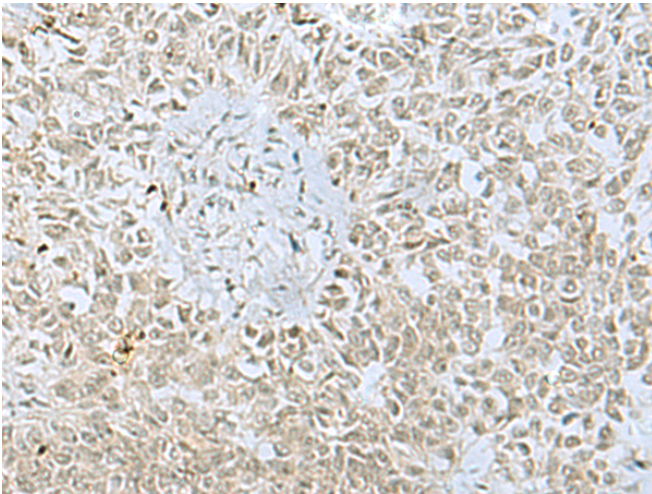
储存和运输: Store at -20°C. Avoid repeated freezing and thawing



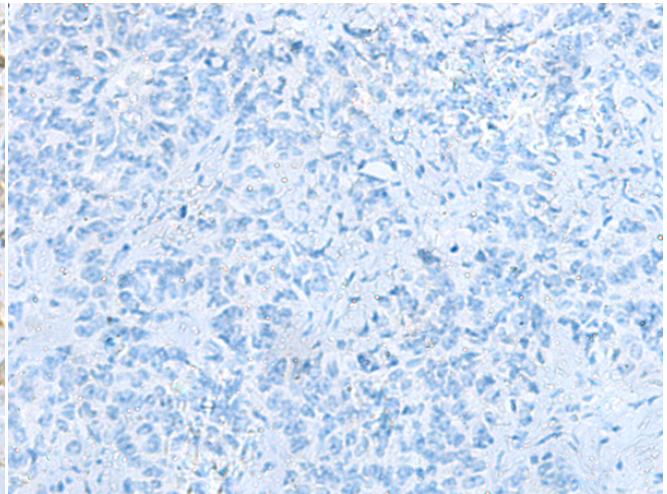
Immunohistochemistry analysis of paraffin embedded Human colorectal cancer tissue using 222048(FOXQ1 Antibody) at a dilution of 1/30(Nucleus).



In comparison with the IHC on the left, the same paraffin-embedded Human colorectal cancer tissue is first treated with the synthetic peptide and then with 222048(Anti-FOXQ1 Antibody) at dilution 1/30.

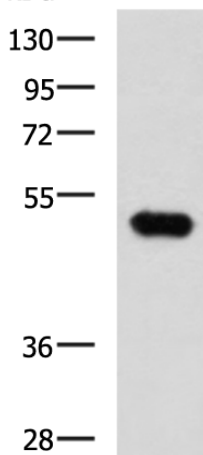


The image on the left is immunohistochemistry of paraffin-embedded Human ovarian cancer tissue using 222048(Anti-FOXQ1 Antibody) at a dilution of 1/30.



In comparison with the IHC on the left, the same paraffin-embedded Human ovarian cancer tissue is first treated with synthetic peptide and then with D263939(Anti-FOXQ1 Antibody) at dilution 1/30.

kDa



Gel: 8%SDS-PAGE, Lysate: 40 µg;
 Lane: Mouse kidney tissue lysate;
 Primary antibody: 222048(FOXQ1 Antibody) at dilution 1/750;
 Secondary antibody: HRP-conjugated Goat anti rabbit IgG at 1/5000 dilution;
 Exposure time: 5 minutes



Product Description

Pioneering GTPase and Oncogene Product Development since 2010
