

## FOXO3 RABBIT PAB

货号: S219784

产品全名: FOXO3 兔多抗

基因符号 FOXO2, AF6q21, FKHL1, FOXO3A, FKHLIP2

**UNIPROT ID:** O43524 (Gene Accession - NP\_001446 )

**背景:** This gene belongs to the forkhead family of transcription factors which are characterized by a distinct forkhead domain. This gene likely functions as a trigger for apoptosis through expression of genes necessary for cell death. Translocation of this gene with the MLL gene is associated with secondary acute leukemia. Alternatively spliced transcript variants encoding the same protein have been observed. Interacts with YWHAB/14-3-3-beta and YWHAZ/14-3-3-zeta, which are required for cytosolic sequestration. Upon oxidative stress, interacts with STK4/MST1, which disrupts interaction with YWHAB/14-3-3-beta and leads to nuclear translocation. Interacts with PIM1. Interacts with DDIT3/CHOP.

**抗原:** Synthetic peptide of human FOXO3

**经过测试的应用:** ELISA, IHC

**推荐稀释比:** IHC: 50-150; ELISA: 1000-5000

**种属反应性:** Rabbit

**克隆性:** Rabbit Polyclonal

**亚型:** Immunogen-specific rabbit IgG

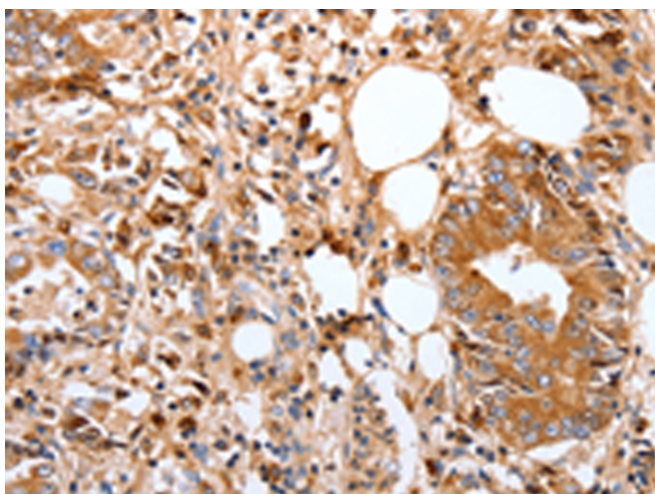
**纯化:** Antigen affinity purification

**种属反应性:** Human, Mouse

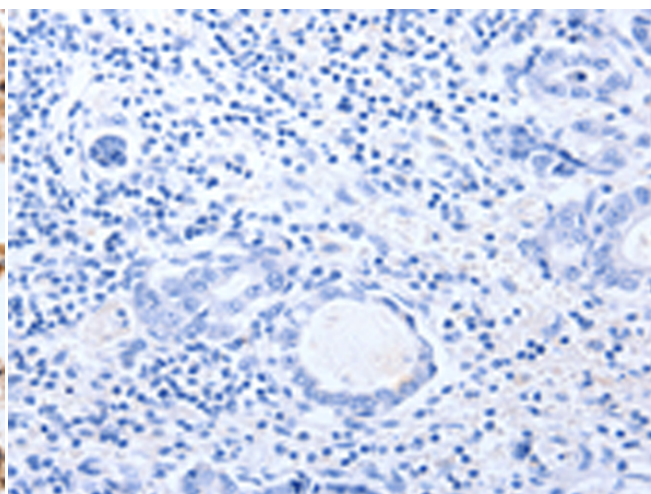
**成分:** PBS (without Mg<sup>2+</sup> and Ca<sup>2+</sup>), pH 7.4, 150 mM NaCl, 0.05% Sodium Azide and 40% glycerol

**研究领域:** Cardiovascular, Epigenetics and Nuclear Signaling, Cancer

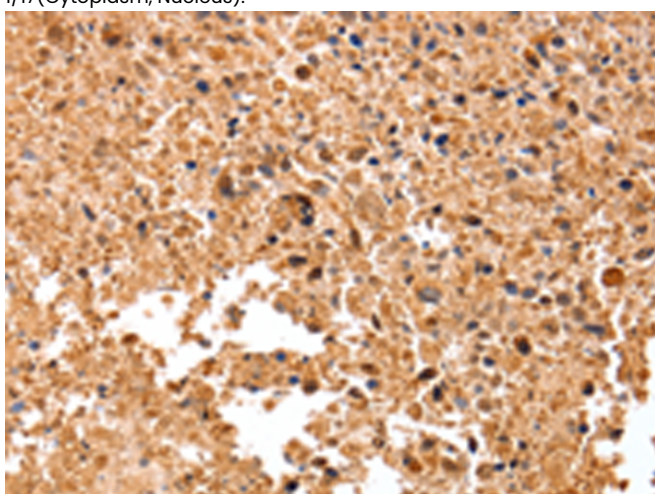
**储存和运输:** Store at -20°C. Avoid repeated freezing and thawing



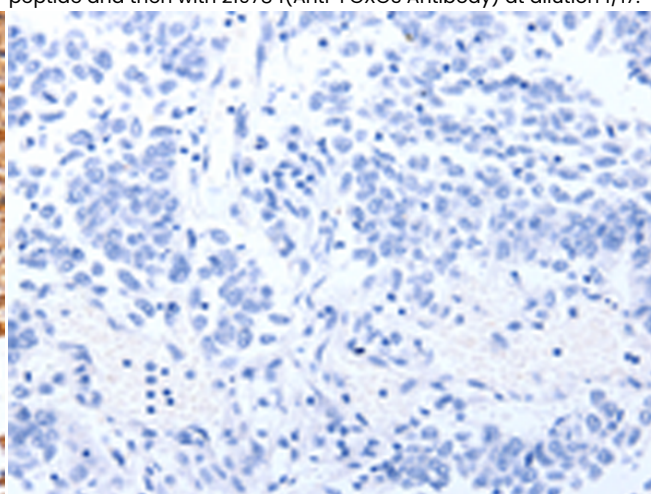
Immunohistochemistry analysis of paraffin embedded Human stomach cancer tissue using 219784(FOXO3 Antibody) at a dilution of 1/17(Cytoplasm, Nucleus).



In comparison with the IHC on the left, the same paraffin-embedded Human stomach cancer tissue is first treated with the synthetic peptide and then with 219784(Anti-FOXO3 Antibody) at dilution 1/17.



The image on the left is immunohistochemistry of paraffin-embedded Human lung cancer tissue using 219784(Anti-FOXO3 Antibody) at a dilution of 1/17.



In comparison with the IHC on the left, the same paraffin-embedded Human lung cancer tissue is first treated with synthetic peptide and then with D260364(Anti-FOXO3 Antibody) at dilution 1/17.



# Product Description

Pioneering GTPase and Oncogene Product Development since 2010

---