

FOXK1 RABBIT PAB

货号: S213525

产品全名: FOXK1 兔多抗

基因符号 FOXK1L

UNIPROT ID: P85037 (Gene Accession - NP_001032242)

背景: Enables 14-3-3 protein binding activity; DNA-binding transcription repressor activity, RNA polymerase II-specific; and transcription cis-regulatory region binding activity. Involved in several processes, including cellular glucose homeostasis; negative regulation of autophagy; and regulation of transcription, DNA-templated. Located in cytoplasm and nucleus. [provided by Alliance of Genome Resources, Apr 2022]

抗原: Synthetic peptide of human FOXK1

经过测试的应用: ELISA, IHC

推荐稀释比: IHC: 30-150; ELISA: 5000-10000

种属反应性: Rabbit

克隆性: Rabbit Polyclonal

亚型: Immunogen-specific rabbit IgG

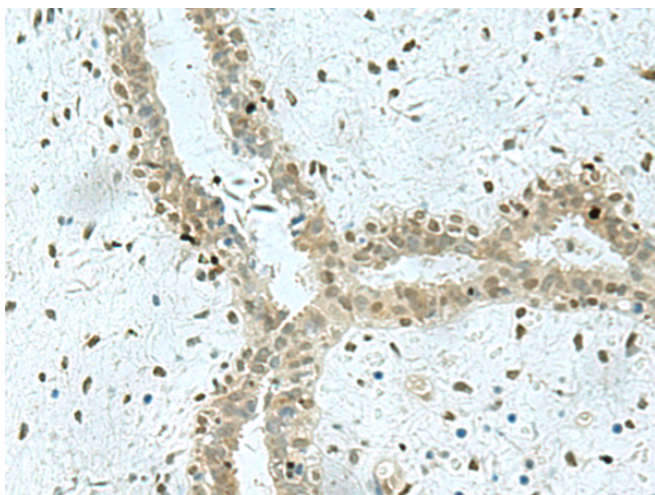
纯化: Antigen affinity purification

种属反应性: Human, Mouse

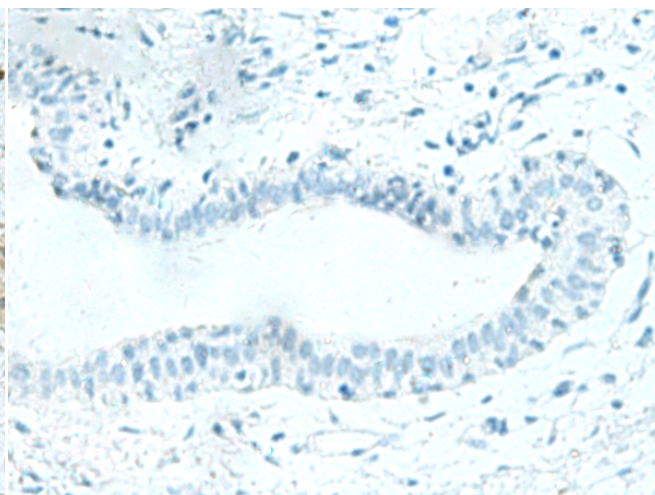
成分: PBS (without Mg²⁺ and Ca²⁺), pH 7.4, 150 mM NaCl, 0.05% Sodium Azide and 40% glycerol

研究领域: Epigenetics and Nuclear Signaling

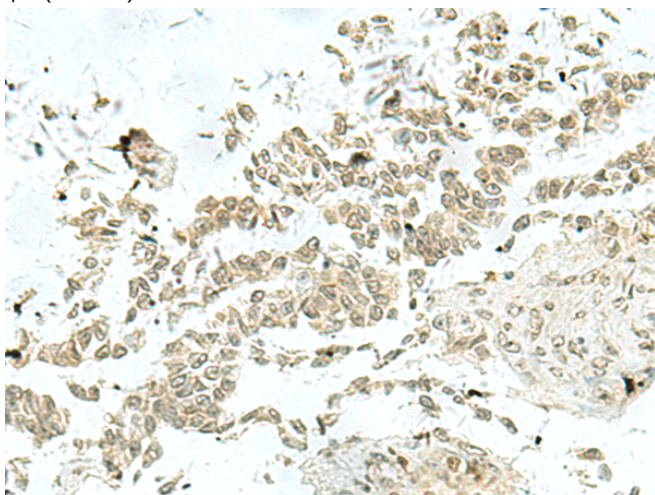
储存和运输: Store at -20°C. Avoid repeated freezing and thawing



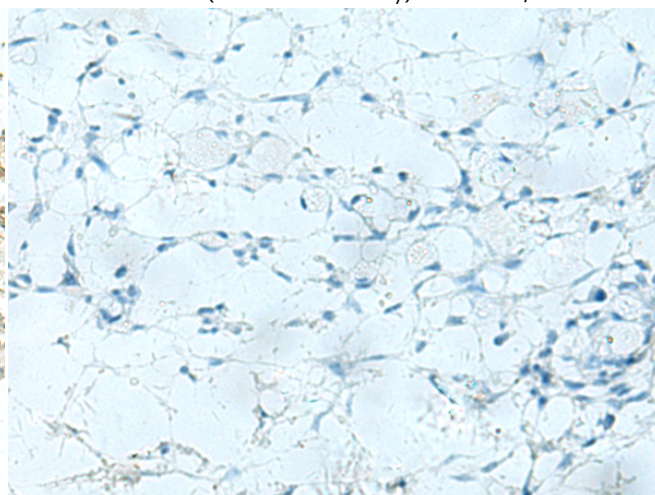
Immunohistochemistry analysis of paraffin embedded Human breast cancer tissue using 213525(FOXK1 Antibody) at a dilution of 1/35(Nucleus).



In comparison with the IHC on the left, the same paraffin-embedded Human breast cancer tissue is first treated with the synthetic peptide and then with 213525(Anti-FOXK1 Antibody) at dilution 1/35.



The image on the left is immunohistochemistry of paraffin-embedded Human ovarian cancer tissue using 213525(Anti-FOXK1 Antibody) at a dilution of 1/35.



In comparison with the IHC on the left, the same paraffin-embedded Human ovarian cancer tissue is first treated with synthetic peptide and then with D160358(Anti-FOXK1 Antibody) at dilution 1/35.



Product Description

Pioneering GTPase and Oncogene Product Development since 2010
