

## FOXB1 RABBIT PAB

货号: S213520

产品全名: FOXB1 兔多抗

基因符号: FKH5; HFKH-5

**UNIPROT ID:** Q99853 (Gene Accession - NP\_036314)

**背景:** The Forkhead-box (FOX) genes comprise a superfamily of at least 43 members that encode proteins which are involved in transcriptional regulation and may be associated with the pathogenesis of various cancers. FOXB1 (forkhead box B1), also known as FKH5 or HFKH-5, and FOXB2 (forkhead box B2) are members of the FOX family and each contain one forkhead DNA-binding domain. Both FOXB1 and FOXB2 localize to the nucleus where they are thought to function as transcription factors that can bind to DNA via their forkhead domains. In mice, defects in the gene encoding FOXB1 are associated with retarded development of the central nervous system (CNS), suggesting that FOXB1 may play a role in CNS organization and function.

**抗原:** Synthetic peptide of human FOXB1

**经过测试的应用:** ELISA, IHC

**推荐稀释比:** IHC: 50-200; ELISA: 2000-5000

**种属反应性:** Rabbit

**克隆性:** Rabbit Polyclonal

**亚型:** Immunogen-specific rabbit IgG

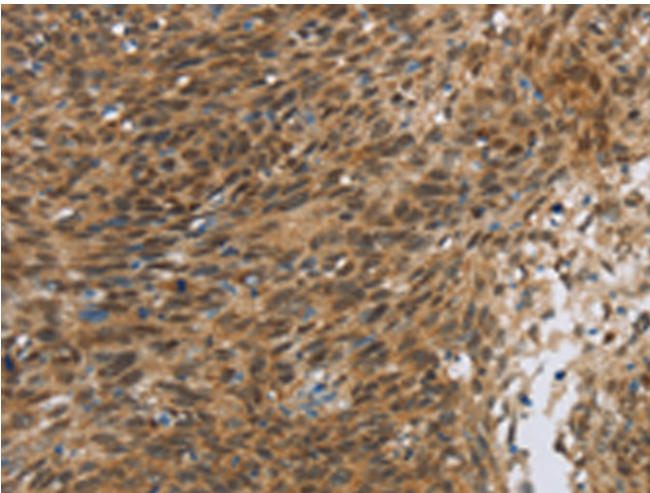
**纯化:** Antigen affinity purification

**种属反应性:** Human, Mouse

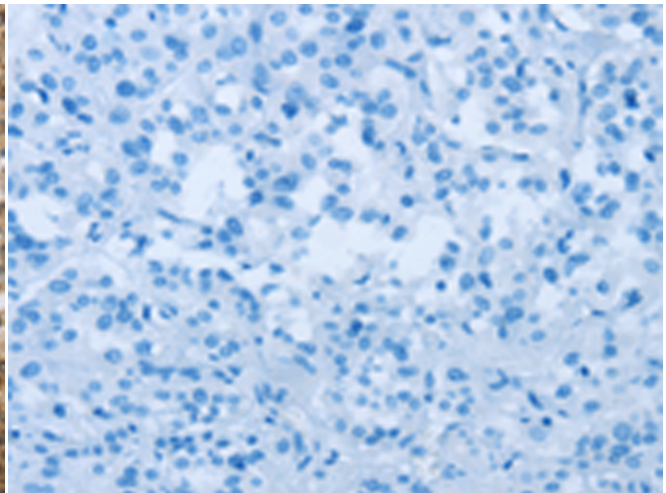
**成分:** PBS (without Mg<sup>2+</sup> and Ca<sup>2+</sup>), pH 7.4, 150 mM NaCl, 0.05% Sodium Azide and 40% glycerol

**研究领域:** Epigenetics and Nuclear Signaling

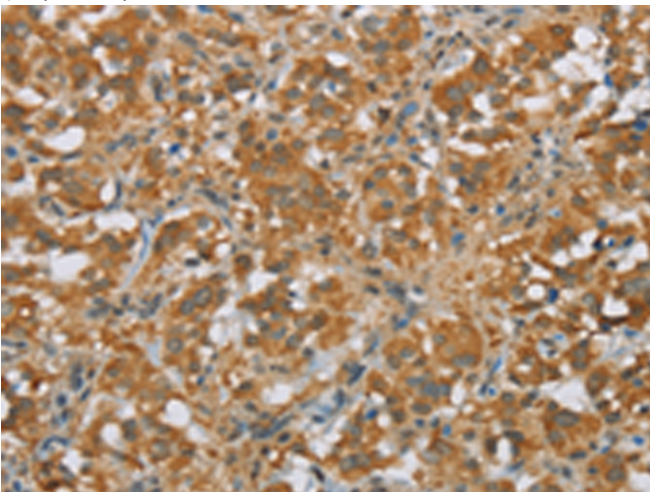
**储存和运输:** Store at -20°C. Avoid repeated freezing and thawing



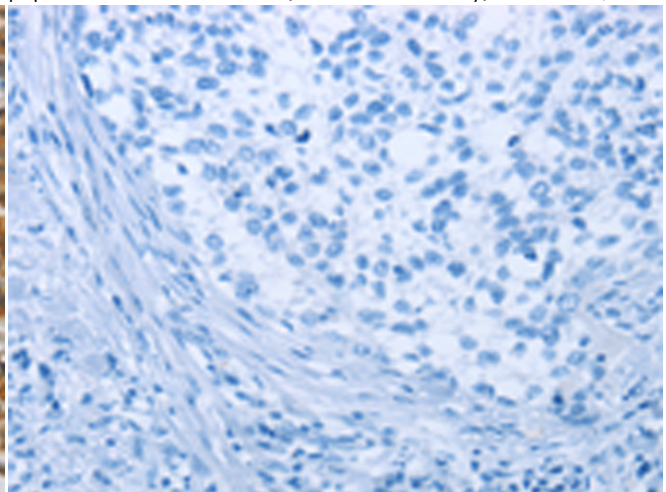
Immunohistochemistry analysis of paraffin embedded Human cervical cancer tissue using 213520(FOXB1 Antibody) at a dilution of 1/30(Nucleus).



In comparison with the IHC on the left, the same paraffin-embedded Human cervical cancer tissue is first treated with the synthetic peptide and then with 213520(Anti-FOXB1 Antibody) at dilution 1/30.



The image on the left is immunohistochemistry of paraffin-embedded Human thyroid cancer tissue using 213520(Anti-FOXB1 Antibody) at a dilution of 1/30.



In comparison with the IHC on the left, the same paraffin-embedded Human thyroid cancer tissue is first treated with synthetic peptide and then with D160346(Anti-FOXB1 Antibody) at dilution 1/30.



# Product Description

Pioneering GTPase and Oncogene Product Development since 2010

---