

## FOLH1B RABBIT PAB

货号: S220556

产品全名: FOLH1B 兔多抗

基因符号: PSM; GCP3; FOLH2; FOLHP; PSMAL; GCP3III; PSMA-LIKE

**UNIPROT ID:** Q9HBA9 (Gene Accession - NP\_710163)

**背景:** PSM is an integral membrane protein, and PCTA-1 is related to the galectin gene family, which mediate both cell-cell and cell-matrix interactions in a manner similar to the selectin subgroup of C-type lectins. STEAP is a serpentine transmembrane cell-surface tumor-antigen that is predicted to functions as a channel or transporter protein. In addition to prostate cancers, STEAP is also upregulated in bladder, colon and ovarian cancers.

**抗原:** Synthetic peptide of human FOLH1B

**经过测试的应用:** ELISA, IHC

**推荐稀释比:** IHC: 50-200; ELISA: 2000-5000

**种属反应性:** Rabbit

**克隆性:** Rabbit Polyclonal

**亚型:** Immunogen-specific rabbit IgG

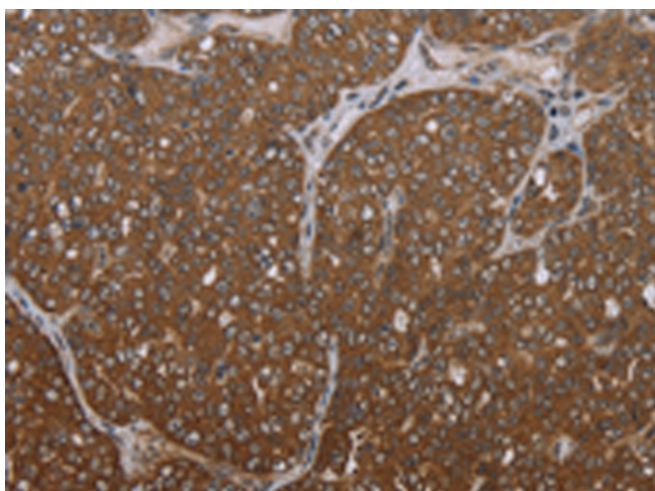
**纯化:** Antigen affinity purification

**种属反应性:** Human

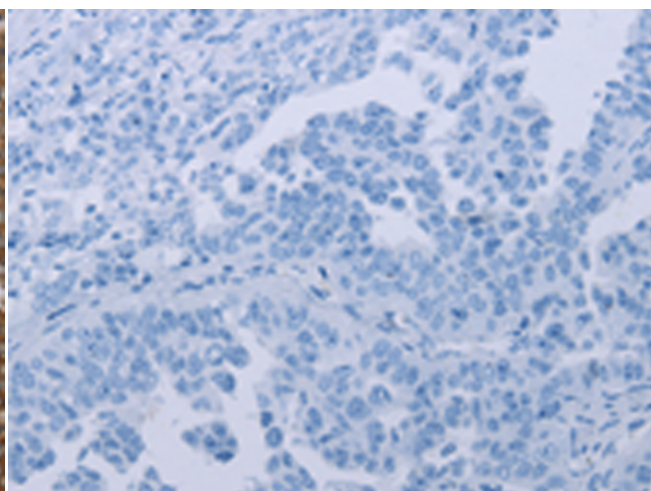
**成分:** PBS (without Mg<sup>2+</sup> and Ca<sup>2+</sup>), pH 7.4, 150 mM NaCl, 0.05% Sodium Azide and 40% glycerol

**研究领域:** Cell Biology

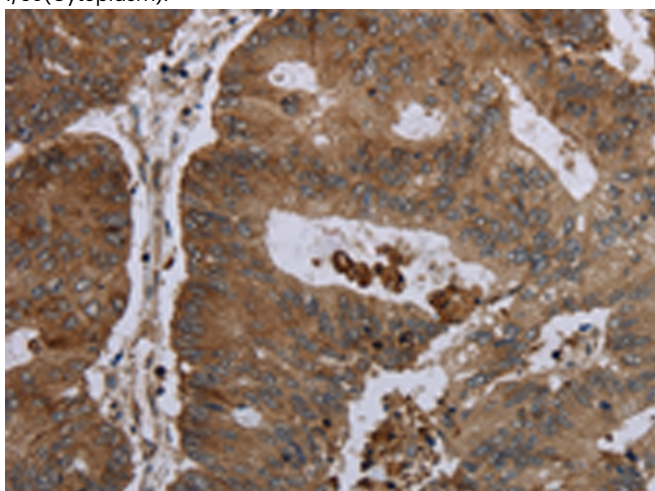
**储存和运输:** Store at -20°C. Avoid repeated freezing and thawing



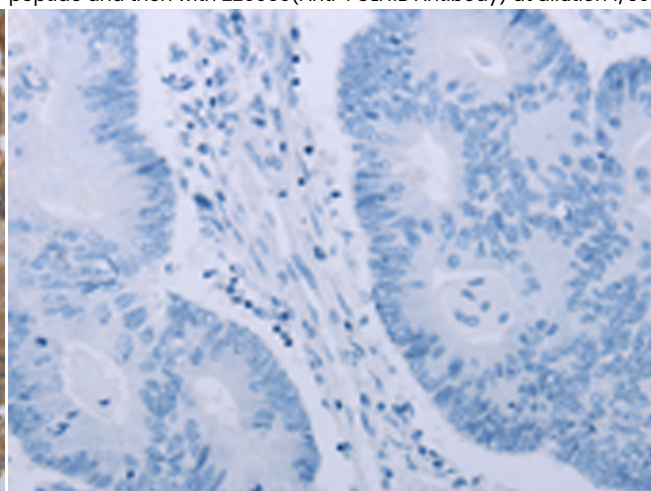
Immunohistochemistry analysis of paraffin embedded Human ovarian cancer tissue using 220556(FOLH1B Antibody) at a dilution of 1/30(Cytoplasm).



In comparison with the IHC on the left, the same paraffin-embedded Human ovarian cancer tissue is first treated with the synthetic peptide and then with 220556(Anti-FOLH1B Antibody) at dilution 1/30.



The image on the left is immunohistochemistry of paraffin-embedded Human colon cancer tissue using 220556(Anti-FOLH1B Antibody) at a dilution of 1/30.



In comparison with the IHC on the left, the same paraffin-embedded Human colon cancer tissue is first treated with synthetic peptide and then with D261689(Anti-FOLH1B Antibody) at dilution 1/30.



# Product Description

Pioneering GTPase and Oncogene Product Development since 2010

---