

## FMO2 RABBIT PAB

货号: S213171

产品全名: FMO2 兔多抗

基因符号 FMO1B1

**UNIPROT ID:** Q99518 (Gene Accession - BC005894 )

**背景:** This gene encodes a flavin-containing monooxygenase family member. It is an NADPH-dependent enzyme that catalyzes the N-oxidation of some primary alkylamines through an N-hydroxylamine intermediate. However, some human populations contain an allele (FMO2\*2A) with a premature stop codon, resulting in a protein that is C-terminally-truncated, has no catalytic activity, and is likely degraded rapidly. This gene is found in a cluster with other related family members on chromosome 1. Alternative splicing results in multiple transcript variants.

**抗原:** Fusion protein of human FMO2

**经过测试的应用:** ELISA, IHC

**推荐稀释比:** IHC: 100-200; ELISA: 5000-10000

**种属反应性:** Rabbit

**克隆性:** Rabbit Polyclonal

**亚型:** Immunogen-specific rabbit IgG

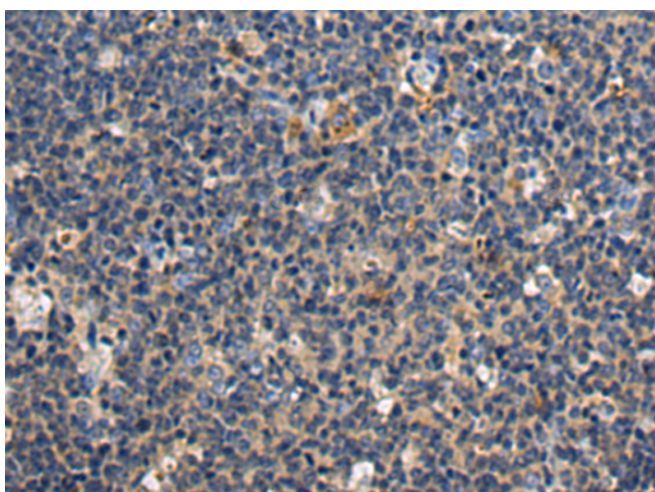
**纯化:** Antigen affinity purification

**种属反应性:** Human, Mouse, Rat

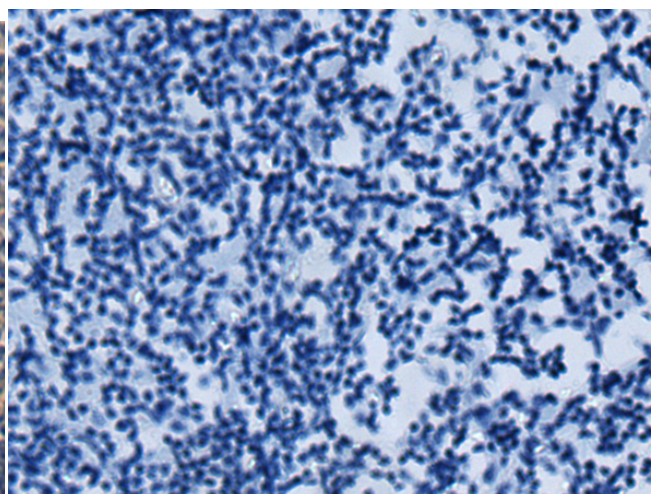
**成分:** PBS (without Mg<sup>2+</sup> and Ca<sup>2+</sup>), pH 7.4, 150 mM NaCl, 0.05% Sodium Azide and 40% glycerol

**研究领域:** Metabolism

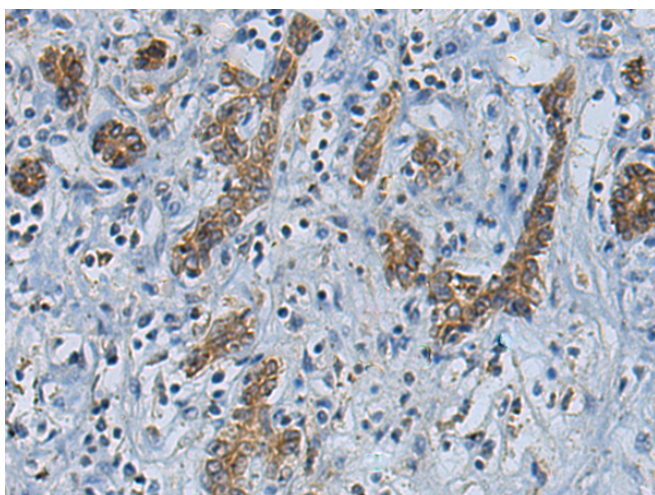
**储存和运输:** Store at -20°C. Avoid repeated freezing and thawing



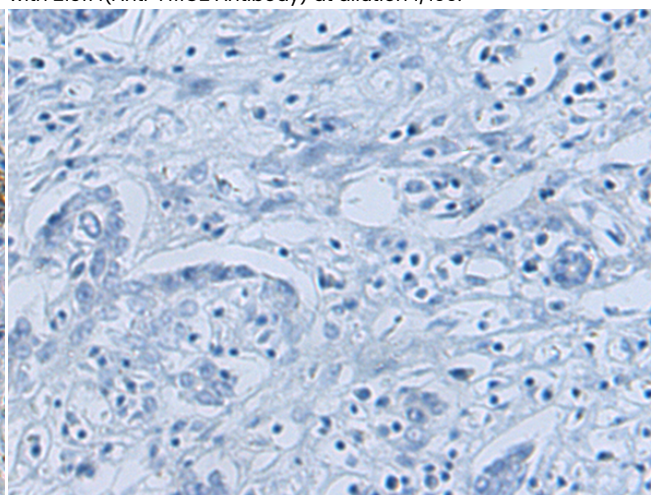
Immunohistochemistry analysis of paraffin embedded Human tonsil tissue using 213171(FMO2 Antibody) at a dilution of 1/100(Cytoplasm).



In comparison with the IHC on the left, the same paraffin-embedded Human tonsil tissue is first treated with the fusion protein and then with 213171(Anti-FMO2 Antibody) at dilution 1/100.



The image on the left is immunohistochemistry of paraffin-embedded Human liver cancer tissue using 213171(Anti-FMO2 Antibody) at a dilution of 1/100.



In comparison with the IHC on the left, the same paraffin-embedded Human liver cancer tissue is first treated with fusion protein and then with D127308(Anti-FMO2 Antibody) at dilution 1/100.



# Product Description

Pioneering GTPase and Oncogene Product Development since 2010

---