

FLCN RABBIT PAB

货号: S217454

产品全名: FLCN 兔多抗

基因符号: BHD; FLCN

UNIPROT ID: Q8NFG4 (Gene Accession - NP_659434)

背景: This gene is located within the Smith-Magenis syndrome region on chromosome 17. Mutations in this gene are associated with Birt-Hogg-Dube syndrome, which is characterized by fibrofolliculomas, renal tumors, lung cysts, and pneumothorax. Alternative splicing of this gene results in two transcript variants encoding different isoforms.

抗原: Fusion protein of human FLCN

经过测试的应用: ELISA, IHC

推荐稀释比: IHC: 100-300; ELISA: 2000-10000

种属反应性: Rabbit

克隆性: Rabbit Polyclonal

亚型: Immunogen-specific rabbit IgG

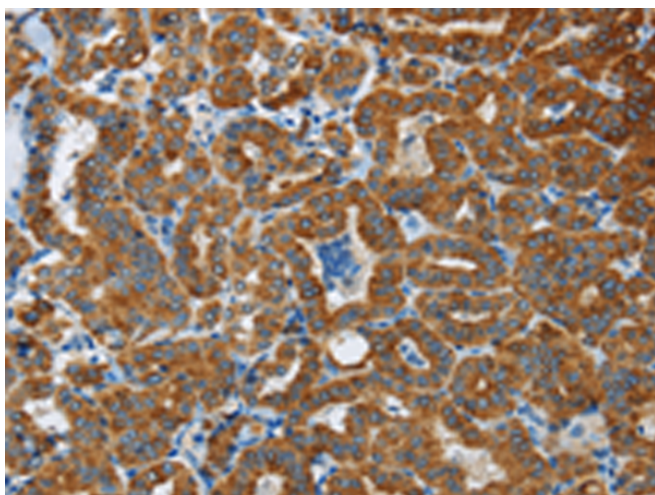
纯化: Antigen affinity purification

种属反应性: Human, Mouse, Rat

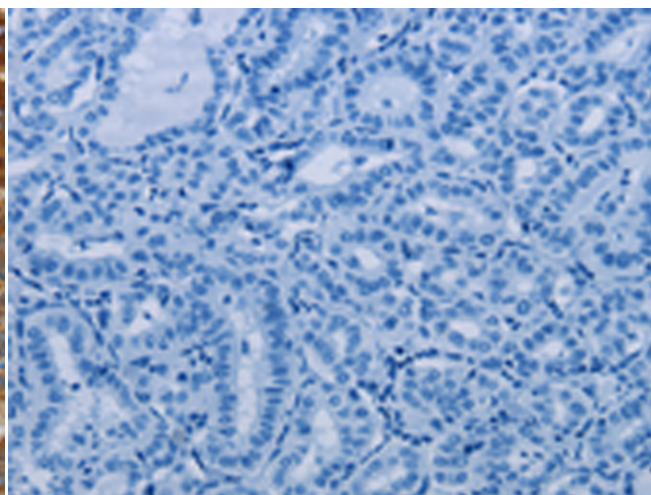
成分: PBS (without Mg²⁺ and Ca²⁺), pH 7.4, 150 mM NaCl, 0.05% Sodium Azide and 40% glycerol

研究领域: Cancer

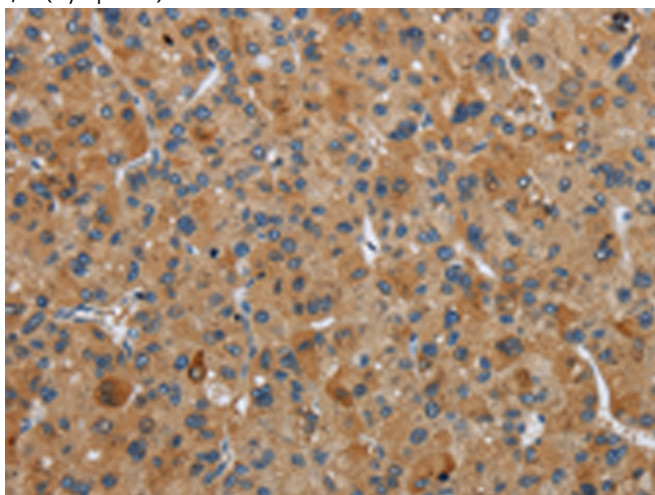
储存和运输: Store at -20°C. Avoid repeated freezing and thawing



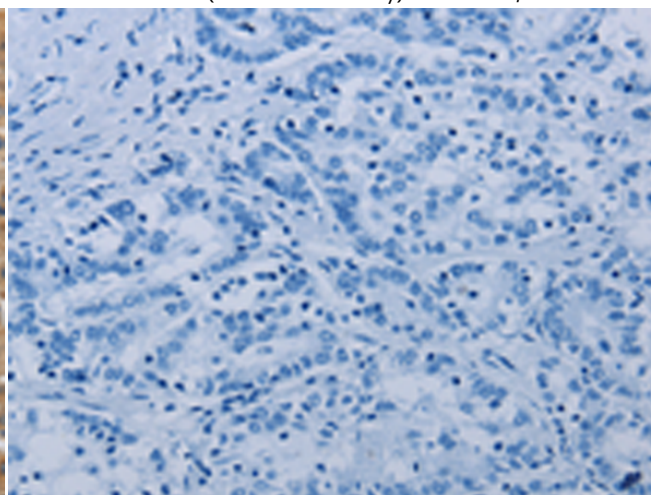
Immunohistochemistry analysis of paraffin embedded Human thyroid cancer tissue using 217454(FLCN Antibody) at a dilution of 1/40(Cytoplasm).



In comparison with the IHC on the left, the same paraffin-embedded Human thyroid cancer tissue is first treated with the fusion protein and then with 217454(Anti-FLCN Antibody) at dilution 1/40.



The image on the left is immunohistochemistry of paraffin-embedded Human liver cancer tissue using 217454(Anti-FLCN Antibody) at a dilution of 1/40.



In comparison with the IHC on the left, the same paraffin-embedded Human liver cancer tissue is first treated with fusion protein and then with D222380(Anti-FLCN Antibody) at dilution 1/40.



Product Description

Pioneering GTPase and Oncogene Product Development since 2010
