

FKBP6 RABBIT MAB

货号: N263334

产品全名: FKBP6 兔单克隆抗体

基因符号 FKBP36

UNIPROT ID: O75344

背景: Co-chaperone required during spermatogenesis to repress transposable elements and prevent their mobilization, which is essential for the germline integrity.

抗原: A synthetic peptide of human FKBP6

经过测试的应用: WB,IHC-P

推荐稀释比: WB: 1/500-1/1000 IHC: 1/50-1/100

种属反应性: Rabbit

克隆性: Rabbit Monoclonal

克隆编号: R05-4G2

分子量: Calculated MW: 37 kDa; Observed MW: 37 kDa

亚型: IgG

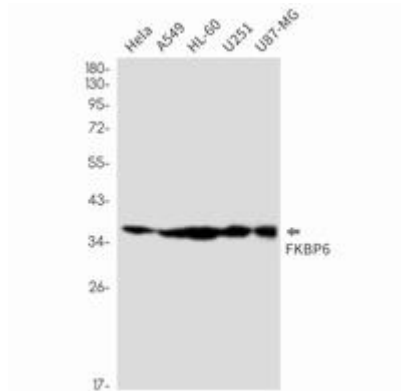
纯化: Affinity Purified

种属反应性: Human, Mouse and Rat

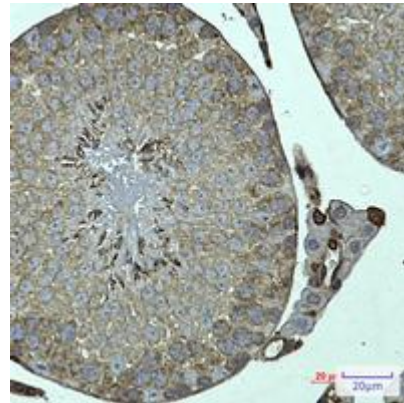
成分: PBS (without Mg²⁺ and Ca²⁺), pH 7.3 containing 50% glycerol, 0.5% BSA and 0.02% sodium azide

研究领域: Immunology

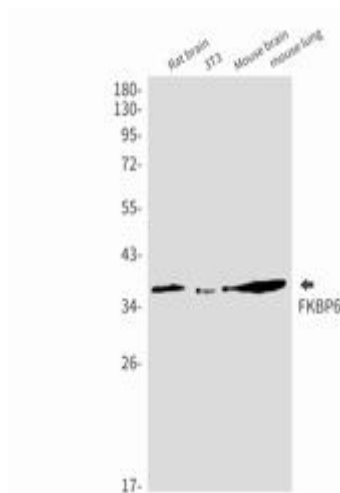
储存和运输: Store at -20°C. Avoid repeated freezing and thawing



Western blot analysis of FKBP6 in HeLa, A549, HL-60, U251, U87-MG lysates using FKBP6 antibody



Immunohistochemistry analysis of paraffin-embedded mouse testis using FKBP6 antibody. High-pressure and temperature Sodium Citrate pH 6.0 was used for antigen retrieval.



Western blot analysis of FKBP6 in rat brain, 3T3, mouse brain, mouse lung lysates using FKBP6 antibody.