

## FIBULIN 1 RABBIT MAB

货号: N262222

产品全名: Fibulin 1 兔单克隆抗体

基因符号 FBLN; FIBL1

**UNIPROT ID:** P23142

**背景:** Incorporated into fibronectin-containing matrix fibers. May play a role in cell adhesion and migration along protein fibers within the extracellular matrix (ECM). Could be important for certain developmental processes and contribute to the supramolecular organization of ECM architecture, in particular to those of basement membranes. Has been implicated in a role in cellular transformation and tumor invasion, it appears to be a tumor suppressor. May play a role in haemostasis and thrombosis owing to its ability to bind fibrinogen and incorporate into clots. Could play a significant role in modulating the neurotrophic activities of APP, particularly soluble APP.

**抗原:** Recombinant protein of human Fibulin 1

**经过测试的应用:** WB,IP

**推荐稀释比:** WB: 1/500-1/1000 IP: 1/20

**种属反应性:** Rabbit

**克隆性:** Rabbit Monoclonal

**克隆编号:** R09-9C1

**分子量:** Calculated MW: 77 kDa; Observed MW: 77 kDa

**亚型:** IgG

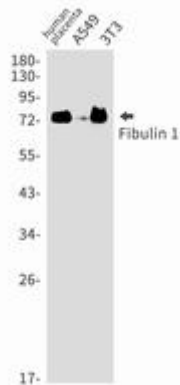
**纯化:** Affinity Purified

**种属反应性:** Human,Mouse

**成分:** PBS (without Mg<sup>2+</sup> and Ca<sup>2+</sup>), pH 7.3 containing 50% glycerol, 0.5% BSA and 0.02% sodium azide

**研究领域:** Cardiovascular

**储存和运输:** Store at -20°C. Avoid repeated freezing and thawing



Western blot analysis of Fibulin 1 in Human placenta, A549, 3T3 lysates using Fibulin 1 antibody.