

FIBRONECTIN RABBIT PAB

货号: N225363

产品全名: Fibronectin 兔多抗

基因符号 FN1; FN; Fibronectin; FN; Cold-insoluble globulin; CIG

UNIPROT ID: P02751

背景: FN1 Fibronectins bind cell surfaces and various compounds including collagen, fibrin, heparin, DNA, and actin. Fibronectins are involved in cell adhesion, cell motility, opsonization, wound healing, and maintenance of cell shape. Mostly heterodimers or multimers of alternatively spliced variants, connected by 2 disulfide bonds near the carboxyl ends; to a lesser extent homodimers.

抗原: The antiserum was produced against synthesized peptide derived from human Fibronectin 1. AA range:2337-2386

经过测试的应用: WB,IHC-P,ELISA

推荐稀释比: WB: 1/500-1/1000 IHC: 1/50-1/100 ELISA: 1/10000

种属反应性: Rabbit

克隆性: Rabbit Polyclonal

分子量: Calculated MW: 272 kDa; Observed MW: 260 kDa

亚型: IgG

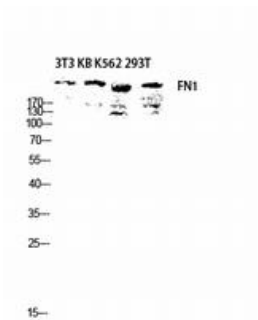
纯化: Affinity Chromatography

种属反应性: Human, Mouse and Rat

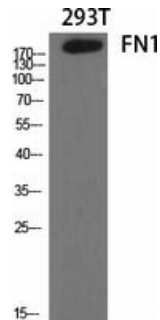
成分: PBS (without Mg²⁺ and Ca²⁺), pH 7.3 containing 50% glycerol, 0.5% BSA and 0.02% sodium azide

研究领域: Cardiovascular

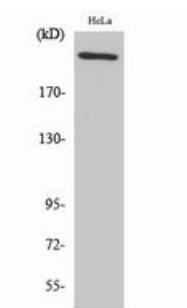
储存和运输: Store at -20°C. Avoid repeated freezing and thawing



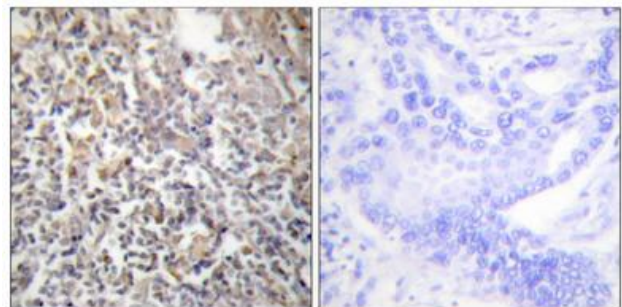
Western blot analysis of Fibronectin in 3T3, KB, K562, 293T lysates using FN1 antibody.



Western blot analysis of Fibronectin in various lysates using Fibronectin antibody.



Western blot analysis of Fibronectin in HeLa lysates using FN1 antibody.



Immunohistochemistry analysis of paraffin-embedded Human thyroid gland tissue using Fibronectin 1 antibody. High-pressure and temperature Sodium Citrate pH 6.0 was used for antigen retrieval. Sample with blocking peptide on the right.