

## FIBIN RABBIT PAB

货号: S219417

产品全名: FIBIN 兔多抗

基因符号

**UNIPROT ID:** Q8TAL6 (Gene Accession - BC026873 )

背景: The function of this protein remains unknown.

抗原: Fusion protein of human FIBIN

经过测试的应用: ELISA, IHC

推荐稀释比: IHC: 150-300; ELISA: 5000-10000

种属反应性: Rabbit

克隆性: Rabbit Polyclonal

亚型: Immunogen-specific rabbit IgG

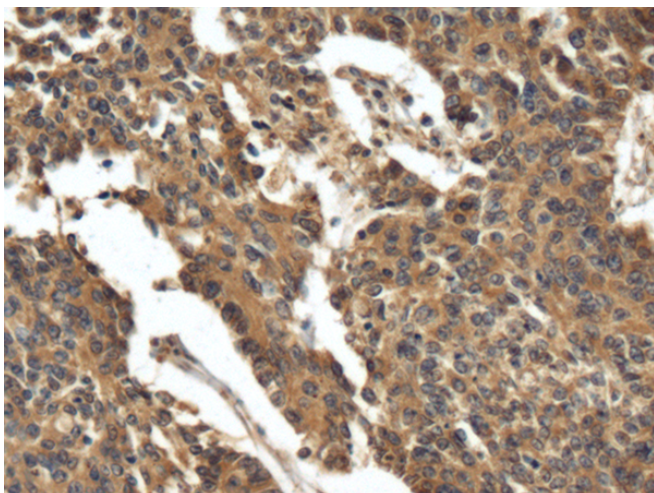
纯化: Antigen affinity purification

种属反应性: Human, Mouse, Rat

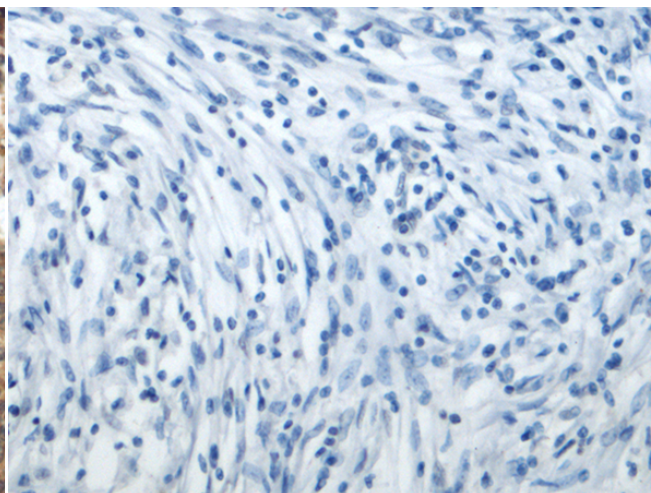
成分: PBS (without Mg<sup>2+</sup> and Ca<sup>2+</sup>), pH 7.4, 150 mM NaCl, 0.05% Sodium Azide and 40% glycerol

研究领域: Cell Biology

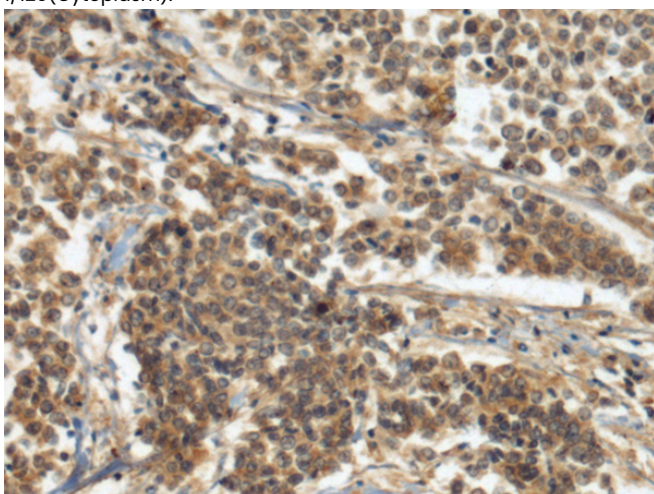
储存和运输: Store at -20°C. Avoid repeated freezing and thawing



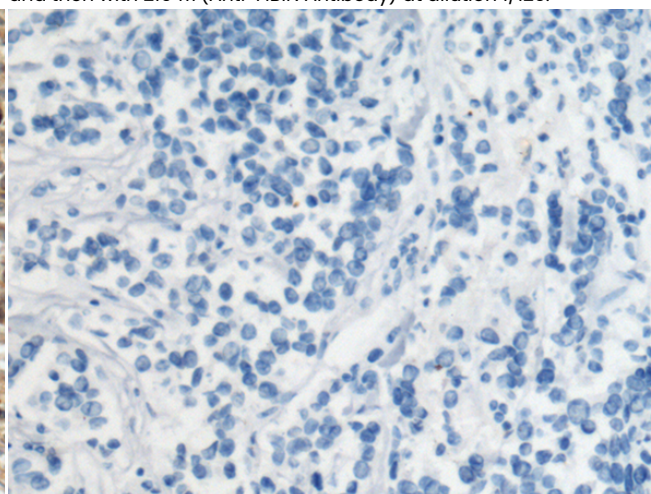
Immunohistochemistry analysis of paraffin embedded Human colorectal cancer tissue using 219417(FIBIN Antibody) at a dilution of 1/120(Cytoplasm).



In comparison with the IHC on the left, the same paraffin-embedded Human colorectal cancer tissue is first treated with the fusion protein and then with 219417(Anti-FIBIN Antibody) at dilution 1/120.



The image on the left is immunohistochemistry of paraffin-embedded Human breast cancer tissue using 219417(Anti-FIBIN Antibody) at a dilution of 1/120.



In comparison with the IHC on the left, the same paraffin-embedded Human breast cancer tissue is first treated with fusion protein and then with D226835(Anti-FIBIN Antibody) at dilution 1/120.



# Product Description

Pioneering GTPase and Oncogene Product Development since 2010

---