

FHL5 RABBIT PAB

货号: S216922

产品全名: FHL5 兔多抗

基因符号: ACT; dJ393D12.2; RP3-393D12.2

UNIPROT ID: Q5TD97 (Gene Accession - BC021723)

背景: The protein encoded by this gene is coordinately expressed with activator of cAMP-responsive element modulator (CREM). It is associated with CREM and confers a powerful transcriptional activation function. CREM acts as a transcription factor essential for the differentiation of spermatids into mature spermatozoa. There are multiple polyadenylation sites found in this gene. Alternative splicing results in multiple transcript variants encoding the same protein.

抗原: Fusion protein of human FHL5

经过测试的应用: ELISA, IHC

推荐稀释比: IHC: 25-100; ELISA: 2000-5000

种属反应性: Rabbit

克隆性: Rabbit Polyclonal

亚型: Immunogen-specific rabbit IgG

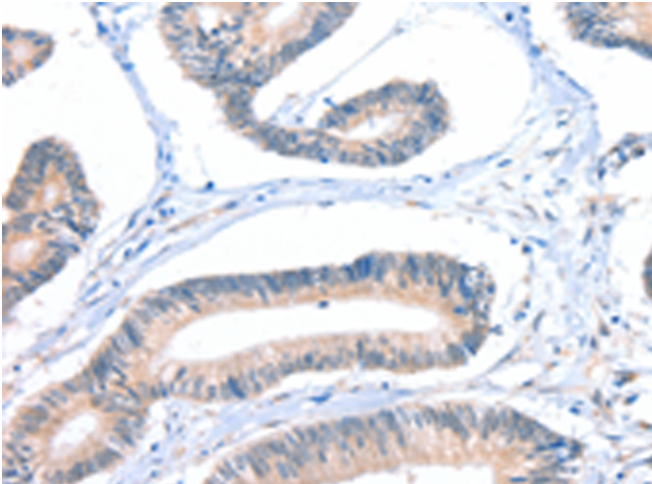
纯化: Antigen affinity purification

种属反应性: Human, Mouse, Rat

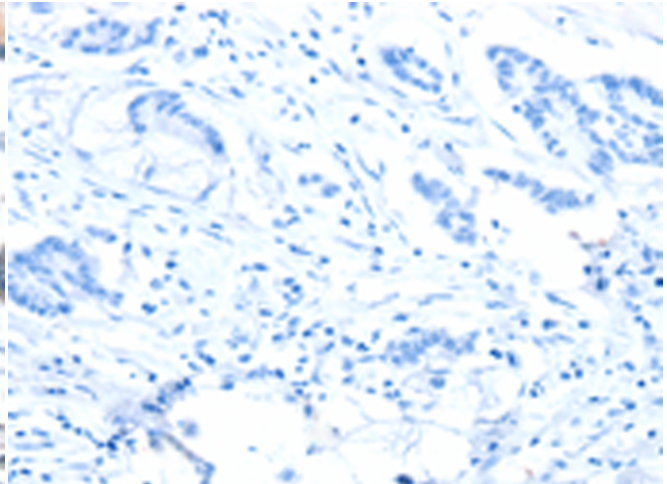
成分: PBS (without Mg²⁺ and Ca²⁺), pH 7.4, 150 mM NaCl, 0.05% Sodium Azide and 40% glycerol

研究领域: Signal Transduction, Epigenetics and Nuclear Signaling

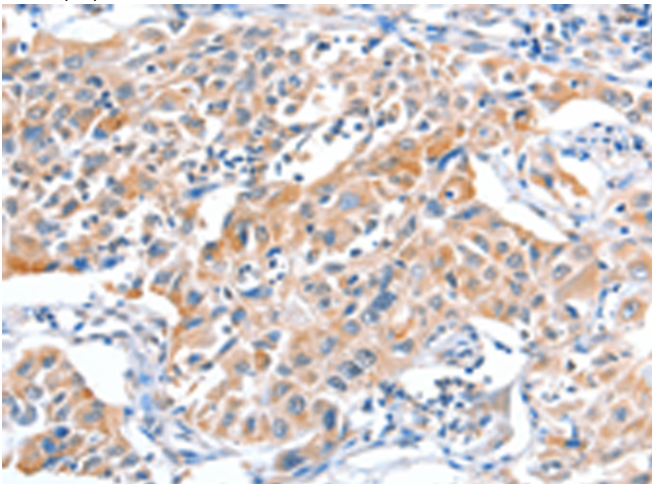
储存和运输: Store at -20°C. Avoid repeated freezing and thawing



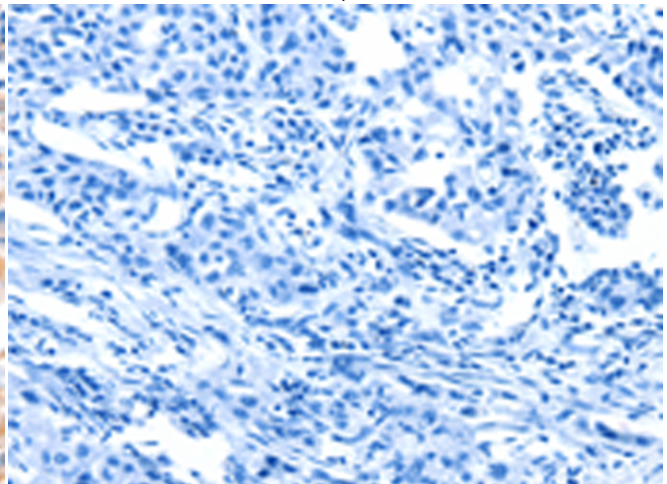
Immunohistochemistry analysis of paraffin embedded Human colon cancer tissue using 216922(FHL5 Antibody) at a dilution of 1/20(Cytoplasm).



In comparison with the IHC on the left, the same paraffin-embedded Human colon cancer tissue is first treated with the fusion protein and then with 216922(Anti-FHL5 Antibody) at dilution 1/20.



The image on the left is immunohistochemistry of paraffin-embedded Human lung cancer tissue using 216922(Anti-FHL5 Antibody) at a dilution of 1/20.



In comparison with the IHC on the left, the same paraffin-embedded Human lung cancer tissue is first treated with fusion protein and then with D221479(Anti-FHL5 Antibody) at dilution 1/20.



Product Description

Pioneering GTPase and Oncogene Product Development since 2010
