

## FHL1 RABBIT MAB

货号: N263332

产品全名: FHL1 兔单克隆抗体

基因符号 FHL1; FHL1A; FHL1B; FLH1A; RBMX1A; RBMX1B; SLIM1; SLIMMER;  
XMPMA

**UNIPROT ID:** Q13642

背景: May have an involvement in muscle development or hypertrophy.

抗原: Recombinant protein of human FHL1

经过测试的应用: WB,IHC-P,IP

推荐稀释比: WB: 1/500-1/1000 IHC: 1/50-1/100 IP: 1/20

种属反应性: Rabbit

克隆性: Rabbit Monoclonal

克隆编号: R03-2H8

分子量: Calculated MW: 36 kDa; Observed MW: 36 kDa

亚型: IgG

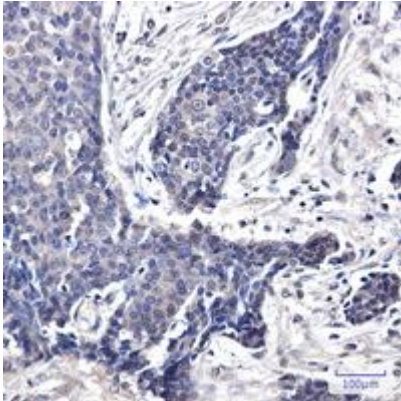
纯化: Affinity Purified

种属反应性: Human

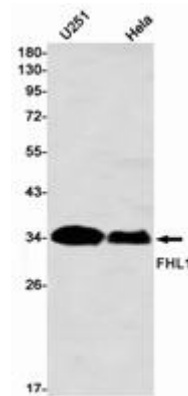
成分: PBS (without Mg<sup>2+</sup> and Ca<sup>2+</sup>), pH 7.3 containing 50% glycerol,  
0.5% BSA and 0.02% sodium azide

研究领域: Epigenetics and Nuclear Signaling

储存和运输: Store at -20°C. Avoid repeated freezing and thawing



Immunohistochemistry analysis of paraffin-embedded Human breast cancer using FHL1 antibody. High-pressure and temperature Sodium Citrate pH 6.0 was used for antigen retrieval.



Western blot analysis of FHL1 in HeLa, U251 lysates using FHL1 antibody.