

FGL2 RABBIT PAB

货号: S217445

产品全名: FGL2 兔多抗

基因符号 T49; pT49

UNIPROT ID: Q14314 (Gene Accession - BC033820)

背景: The protein encoded by this gene is a secreted protein that is similar to the beta- and gamma-chains of fibrinogen. The carboxyl-terminus of the encoded protein consists of the fibrinogen-related domains (FRED). The encoded protein forms a tetrameric complex which is stabilized by interchain disulfide bonds. This protein may play a role in physiologic functions at mucosal sites.

抗原: Fusion protein of human FGL2

经过测试的应用: ELISA, WB, IHC

推荐稀释比: IHC: 50-100;WB: 1000-5000;ELISA: 5000-10000

种属反应性: Rabbit

克隆性: Rabbit Polyclonal

亚型: Immunogen-specific rabbit IgG

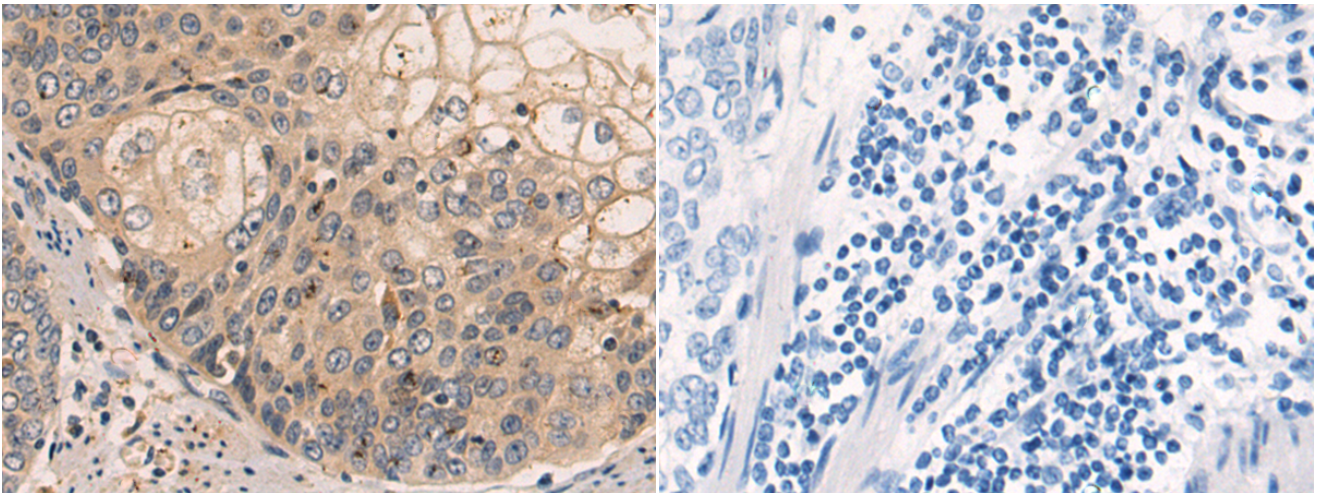
纯化: Antigen affinity purification

种属反应性: Human, Mouse

成分: PBS (without Mg²⁺ and Ca²⁺), pH 7.4, 150 mM NaCl, 0.05% Sodium Azide and 40% glycerol

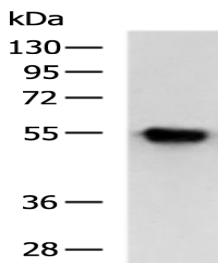
研究领域: Immunology

储存和运输: Store at -20°C. Avoid repeated freezing and thawing



Immunohistochemistry analysis of paraffin embedded Human esophagus cancer tissue using 217445(FGL2 Antibody) at a dilution of 1/70(Secreted).

In comparison with the IHC on the left, the same paraffin-embedded Human esophagus cancer tissue is first treated with the fusion protein and then with 217445(Anti-FGL2 Antibody) at dilution 1/70.



Gel: 8%SDS-PAGE, Lysate: 40 µg;

Lane: A375 cell lysate;

Primary antibody: 217445(FGL2 Antibody) at dilution 1/1000;

Secondary antibody: HRP-conjugated Goat anti rabbit IgG at 1/5000 dilution;

Exposure time: 10 seconds