

FGL1 RABBIT PAB

货号: N225027

产品全名: FGL1 兔多抗

基因符号 FGL1; HFREP1; Fibrinogen-like protein 1; HP-041; Hepassocin; Hepatocyte-derived fibrinogen-related protein 1; HFREP-1; Liver fibrinogen-related protein 1; LFIRE-1

UNIPROT ID: Q08830

背景: Immune suppressive molecule that inhibits antigen-specific T-cell activation by acting as a major ligand of LAG3.

抗原: Synthesized peptide derived from the Internal region of human Hepassocin.

经过测试的应用: WB,IHC-P,ELISA

推荐稀释比: WB: 1/500-1/1000 IHC: 1/50-1/100 ELISA: 1/10000

种属反应性: Rabbit

克隆性: Rabbit Polyclonal

分子量: Calculated MW: 36 kDa; Observed MW: 36 kDa

亚型: IgG

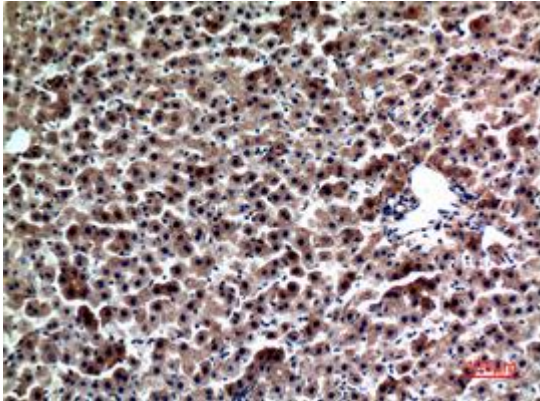
纯化: Affinity Purified

种属反应性: Human, Mouse and Rat

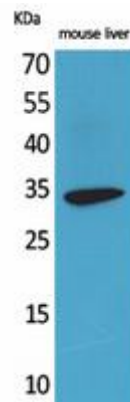
成分: PBS (without Mg²⁺ and Ca²⁺), pH 7.3 containing 50% glycerol, 0.5% BSA and 0.02% sodium azide

研究领域: Cardiovascular

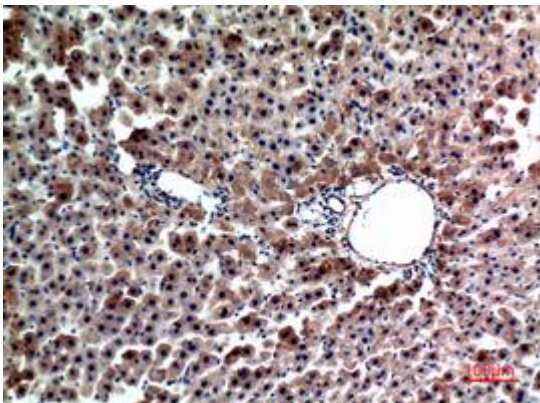
储存和运输: Store at -20°C. Avoid repeated freezing and thawing



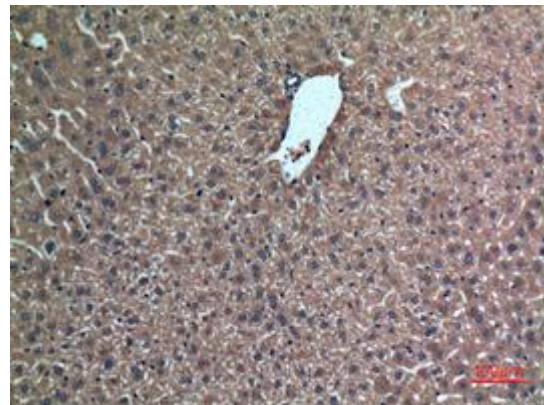
Immunohistochemistry analysis of paraffin-embedded rat liver using FGL1 antibody. High-pressure and temperature Sodium Citrate pH 6.0 was used for antigen retrieval.



Western blot analysis of FGL1 in mouse liver lysates using FGL1 antibody.



Immunohistochemistry analysis of paraffin-embedded rat liver using FGL1 antibody. High-pressure and temperature Sodium Citrate pH 6.0 was used for antigen retrieval.



Immunohistochemistry analysis of paraffin-embedded mouse liver using FGL1 antibody. High-pressure and temperature Sodium Citrate pH 6.0 was used for antigen retrieval.