

## FGFR1OP2 RABBIT PAB

货号: S217443

产品全名: FGFR1OP2 兔多抗

基因符号: WIT3.0; HSPC123-like

**UNIPROT ID:** Q9NVK5 (Gene Accession - BC032143)

**背景:** Acidic and basic fibroblast growth factors (FGFs) are members of a family of multifunctional polypeptide growth factors that stimulate proliferation of cells of mesenchymal, epithelial and neuroectodermal origin. Like other growth factors, FGFs act by binding and activating specific cell surface receptors which include the Flg receptor (FGFR-1) and the Bek receptor (FGFR-2), as well as FGFR-3, FGFR-4, FGFR-5 and FGFR-6. FGFR1OP2 (FGFR1 oncogene partner 2), also known as HSPC123, is a 253 amino acid cytoplasmic protein that is expressed in spleen, thymus and bone marrow and is involved in wound healing under normal cellular conditions. Additionally, FGFR1OP2 may also exist as an aberrant fusion protein with Flg and it is thought that the FGFR1OP2-Flg mutant may play a role in the pathogenesis of stem cell myeloproliferative disorder (MPD). Multiple isoforms of FGFR1OP2 exist due to alternative splicing events.

**抗原:** Fusion protein of human FGFR1OP2

**经过测试的应用:** ELISA, IHC

**推荐稀释比:** IHC: 50-200; ELISA: 2000-5000

**种属反应性:** Rabbit

**克隆性:** Rabbit Polyclonal

**亚型:** Immunogen-specific rabbit IgG

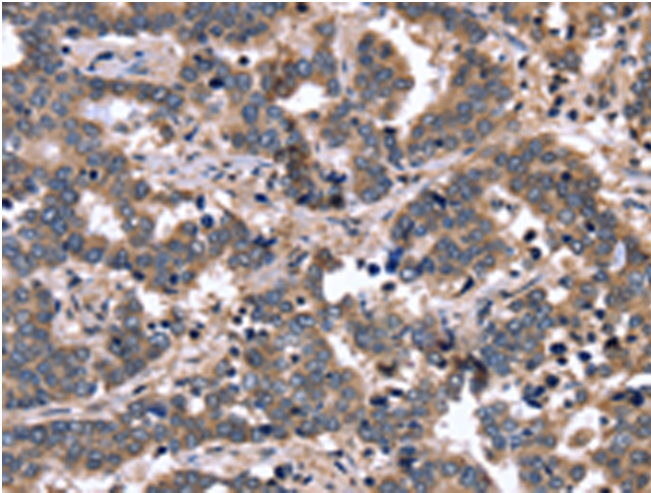
**纯化:** Antigen affinity purification

**种属反应性:** Human, Mouse, Rat

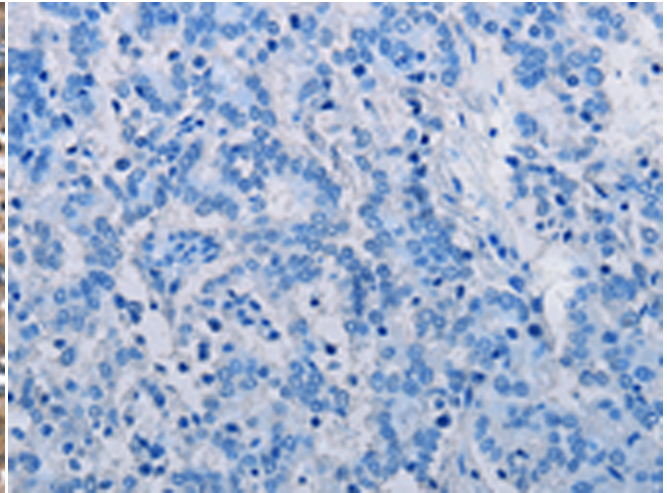
**成分:** PBS (without Mg<sup>2+</sup> and Ca<sup>2+</sup>), pH 7.4, 150 mM NaCl, 0.05% Sodium Azide and 40% glycerol

**研究领域:** Cell Biology

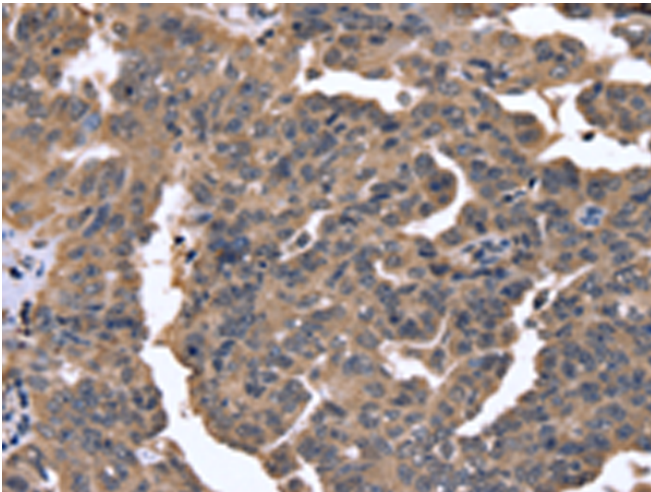
**储存和运输:** Store at -20°C. Avoid repeated freezing and thawing



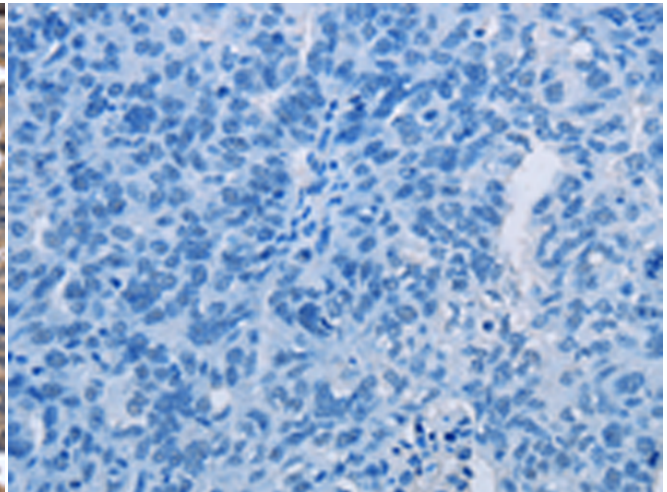
Immunohistochemistry analysis of paraffin embedded Human liver cancer tissue using 217443(FGFR1OP2 Antibody) at a dilution of 1/40(Cytoplasm).



In comparison with the IHC on the left, the same paraffin-embedded Human liver cancer tissue is first treated with the fusion protein and then with 217443(Anti-FGFR1OP2 Antibody) at dilution 1/40.



The image on the left is immunohistochemistry of paraffin-embedded Human ovarian cancer tissue using 217443(Anti-FGFR1OP2 Antibody) at a dilution of 1/40.



In comparison with the IHC on the left, the same paraffin-embedded Human ovarian cancer tissue is first treated with fusion protein and then with D222366(Anti-FGFR1OP2 Antibody) at dilution 1/40.