

## FGFR1 ONCOGENE PARTNER RABBIT MAB

货号: N263330

产品全名: FGFR1 Oncogene Partner 兔单克隆抗体

基因符号 FOP; FGFR1OP

**UNIPROT ID:** O95684

背景: Required for anchoring microtubules to the centrosomes.

抗原: A synthetic peptide of human FGFR1 Oncogene Partner

经过测试的应用: WB,ICC/IF,IP

推荐稀释比: WB: 1/500-1/1000 IF: 1/50-1/200 IP: 1/20

种属反应性: Rabbit

克隆性: Rabbit Monoclonal

克隆编号: R02-1H4

分子量: Calculated MW: 43 kDa; Observed MW: 43 kDa

亚型: IgG

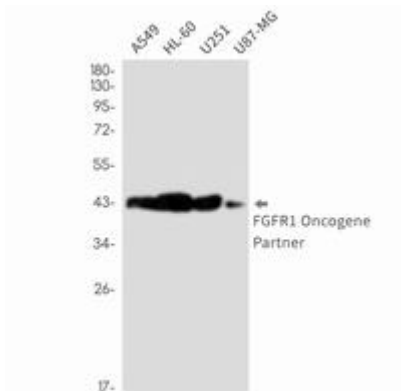
纯化: Affinity Purified

种属反应性: Human, Mouse and Rat

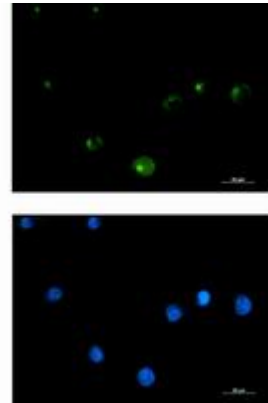
成分: PBS (without Mg<sup>2+</sup> and Ca<sup>2+</sup>), pH 7.3 containing 50% glycerol, 0.5% BSA and 0.02% sodium azide

研究领域: -

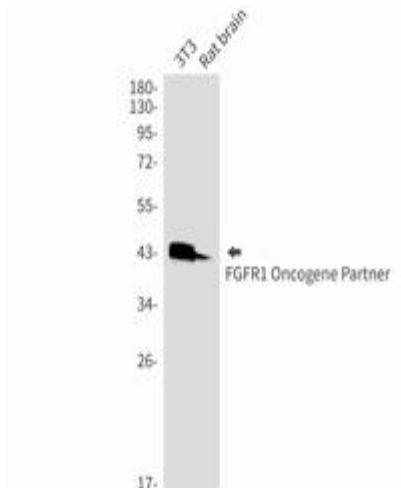
储存和运输: Store at -20°C. Avoid repeated freezing and thawing



Western blot analysis of FGFR1 Oncogene Partner in A549, HL-60, U251, U87-MG lysates using FGFR1 Oncogene Partner antibody



Immunocytochemistry analysis of FGFR1 Oncogene Partner (green) in K562 using FGFR1 Oncogene Partner antibody, and DAPI (blue).



Western blot analysis of FGFR1 Oncogene Partner in 3T3, rat brain lysates using FGFR1 Oncogene Partner antibody.