

FERRITIN HEAVY CHAIN RABBIT PAB

货号: N225679

产品全名: Ferritin Heavy Chain 兔多抗

基因符号 FTH1; FTH; FTHL6; OK/SW-cl.84; PIG15; Ferritin heavy chain;
Ferritin H subunit; Cell proliferation-inducing gene 15 蛋白

UNIPROT ID: P02794

背景: The assembled ferritin molecule, often referred to as a nanocage, can store up to 4,500 atoms of iron. It forms a holoenzyme of ~450 kDa, consisting of 24 subunits made up of two types of polypeptide chains: ferritin heavy chain and ferritin light chain, each having unique functions. Ferritin heavy chains catalyze the first step in iron storage, the oxidation of Fe(II), whereas ferritin light chains promote the nucleation of ferrihydrite, enabling storage of Fe(III).

抗原: A synthesized peptide derived from human Ferritin

经过测试的应用: WB, ICC/IF

推荐稀释比: WB: 1/500-1/1000 IF: 1/50-1/200

种属反应性: Rabbit

克隆性: Rabbit Polyclonal

分子量: Calculated MW: 21 kDa; Observed MW: 21 kDa

亚型: IgG

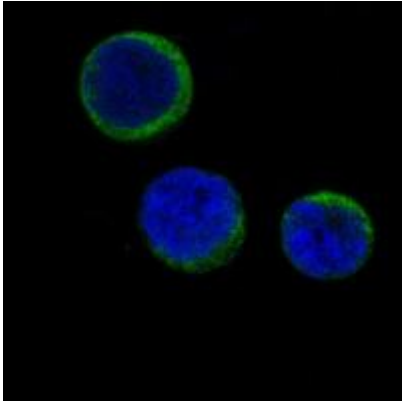
纯化: Affinity Chromatography

种属反应性: Human, Mouse and Rat

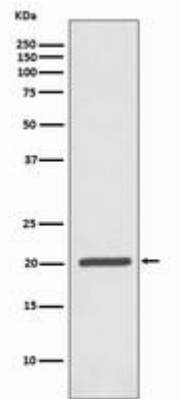
成分: PBS (without Mg²⁺ and Ca²⁺), pH 7.3 containing 50% glycerol, 0.5% BSA and 0.02% sodium azide

研究领域: Neuroscience

储存和运输: Store at -20°C. Avoid repeated freezing and thawing



Immunofluorescence analysis of Ferritin Heavy Chain in Jurkat using Ferritin antibody.



Western blot analysis of Ferritin in Jurkat lysates using Ferritin Heavy Chain antibody.