

FERRITIN HEAVY CHAIN RABBIT MAB

货号: N261741

产品全名: Ferritin Heavy Chain 兔单克隆抗体

基因符号 FTH1; FTH; FTHL6; OK/SW-cl.84; PIG15; Ferritin heavy chain;
Ferritin H subunit; Cell proliferation-inducing gene 15 蛋白

UNIPROT ID: P02794

背景: The assembled ferritin molecule, often referred to as a nanocage, can store up to 4,500 atoms of iron. It forms a holoenzyme of ~450 kDa, consisting of 24 subunits made up of two types of polypeptide chains: ferritin heavy chain and ferritin light chain, each having unique functions. Ferritin heavy chains catalyze the first step in iron storage, the oxidation of Fe(II), whereas ferritin light chains promote the nucleation of ferrihydrite, enabling storage of Fe(III).

抗原: A synthetic peptide of human Ferritin

经过测试的应用: WB, ICC/IF

推荐稀释比: WB: 1/500-1/1000 IF: 1/50-1/200

种属反应性: Rabbit

克隆性: Rabbit Monoclonal

克隆编号: R03-3D9

分子量: Calculated MW: 21 kDa; Observed MW: 21 kDa

亚型: IgG

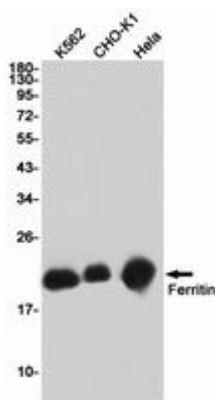
纯化: Affinity Purified

种属反应性: Human, Mouse and Rat, Hamster

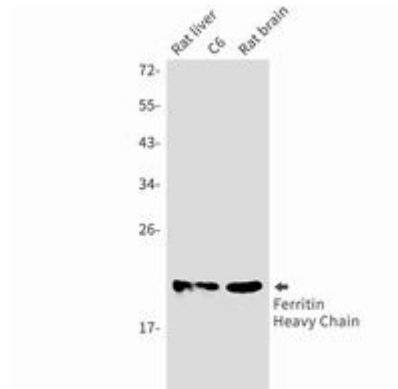
成分: PBS (without Mg²⁺ and Ca²⁺), pH 7.3 containing 50% glycerol, 0.5% BSA and 0.02% sodium azide

研究领域: Neuroscience

储存和运输: Store at -20°C. Avoid repeated freezing and thawing



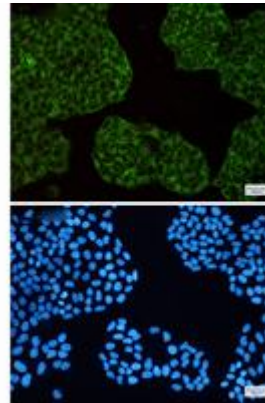
Western blot analysis of Ferritin in K562, CHO-K1, HeLa lysates using Ferritin antibody



Western blot analysis of Ferritin Heavy Chain in rat liver, C6, rat brain lysates using Ferritin Heavy Chain antibody.



Western blot analysis of Ferritin in Raw264.7 lysates using Ferritin antibody.



Immunocytochemistry analysis of Ferritin (green) in HeLa using Ferritin antibody, and DAPI (blue).