

## FERD3L RABBIT PAB

货号: S222030

产品全名: FERD3L 兔多抗

基因符号: PTFB; NATO3; NTWIST; N-TWIST; bHLHa31

**UNIPROT ID:** Q96RJ6 (Gene Accession - NP\_690862)

**背景:** Transcription factor that binds to the E-box and functions as inhibitor of transcription. DNA binding requires dimerization with an E protein. Inhibits transcription activation by ASCL1/MASH1 by sequestering E proteins (By similarity).

**抗原:** Synthetic peptide of human FERD3L

**经过测试的应用:** ELISA, IHC

**推荐稀释比:** IHC: 50-300; ELISA: 5000-10000

**种属反应性:** Rabbit

**克隆性:** Rabbit Polyclonal

**亚型:** Immunogen-specific rabbit IgG

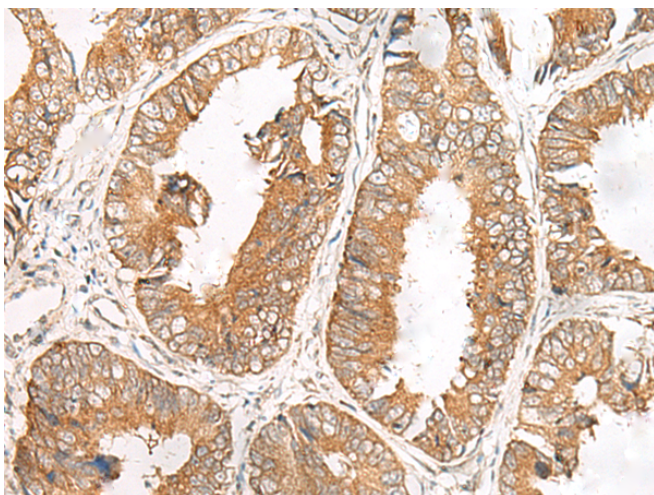
**纯化:** Antigen affinity purification

**种属反应性:** Human

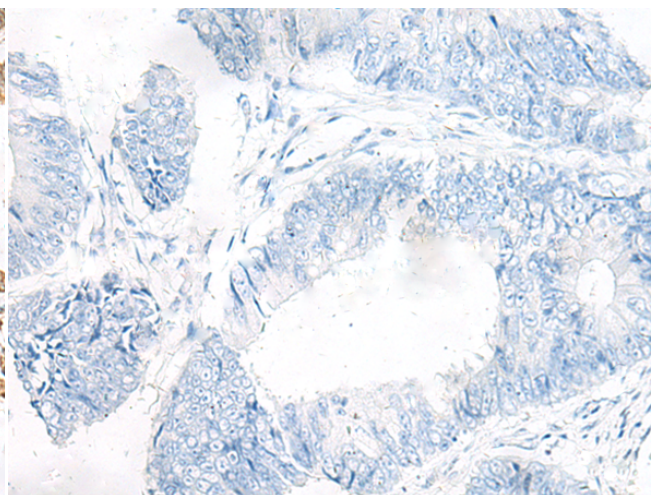
**成分:** PBS (without Mg<sup>2+</sup> and Ca<sup>2+</sup>), pH 7.4, 150 mM NaCl, 0.05% Sodium Azide and 40% glycerol

**研究领域:** Epigenetics and Nuclear Signaling

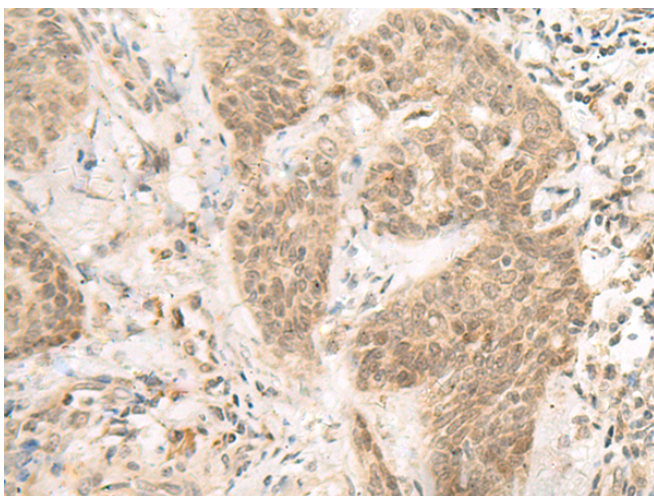
**储存和运输:** Store at -20°C. Avoid repeated freezing and thawing



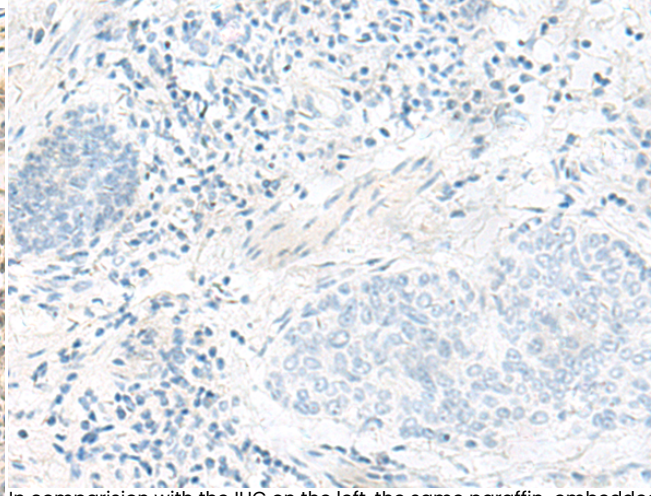
Immunohistochemistry analysis of paraffin embedded Human colorectal cancer tissue using 222030(FERD3L Antibody) at a dilution of 1/85(Cytoplasm or Nucleus).



In comparison with the IHC on the left, the same paraffin-embedded Human colorectal cancer tissue is first treated with the synthetic peptide and then with 222030(Anti-FERD3L Antibody) at dilution 1/85.



The image on the left is immunohistochemistry of paraffin-embedded Human esophagus cancer tissue using 222030(Anti-FERD3L Antibody) at a dilution of 1/85.



In comparison with the IHC on the left, the same paraffin-embedded Human esophagus cancer tissue is first treated with synthetic peptide and then with D263908(Anti-FERD3L Antibody) at dilution 1/85.



# Product Description

Pioneering GTPase and Oncogene Product Development since 2010

---