

FEM1A RABBIT PAB

货号: S220547

产品全名: FEM1A 兔多抗

基因符号: EPRAP

UNIPROT ID: Q9BSK4 (Gene Accession - NP_061178)

背景: Probable component of an E3 ubiquitin-protein ligase complex in which it may act as a substrate recognition subunit (By similarity). May participate in antiinflammatory signaling via its interaction with PTGER4.

抗原: Synthetic peptide of human FEM1A

经过测试的应用: ELISA, IHC

推荐稀释比: IHC: 25-100; ELISA: 1000-2000

种属反应性: Rabbit

克隆性: Rabbit Polyclonal

亚型: Immunogen-specific rabbit IgG

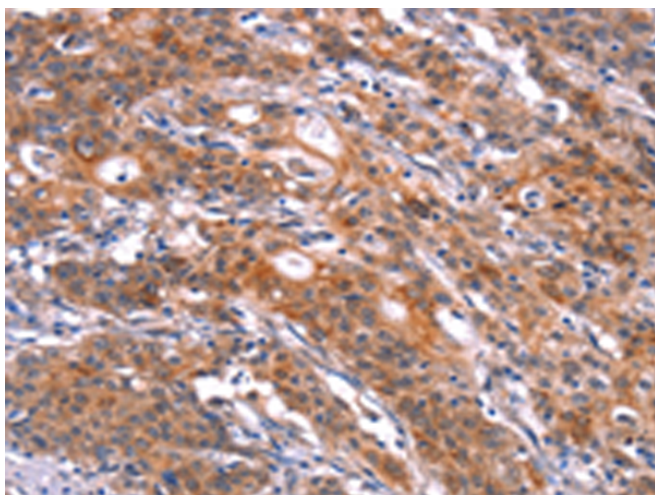
纯化: Antigen affinity purification

种属反应性: Human

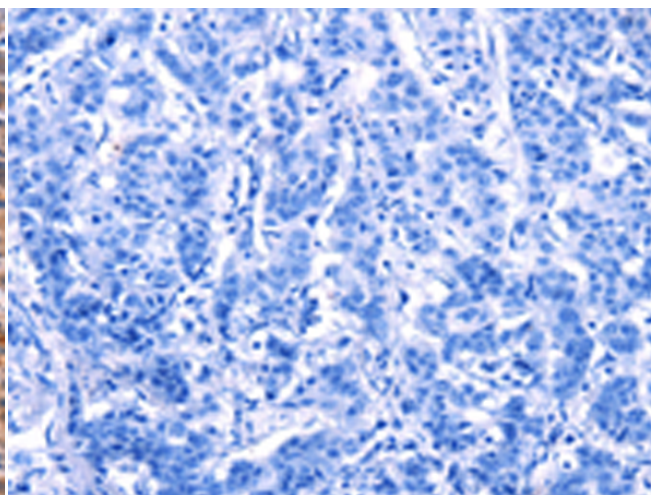
成分: PBS (without Mg²⁺ and Ca²⁺), pH 7.4, 150 mM NaCl, 0.05% Sodium Azide and 40% glycerol

研究领域: Cancer

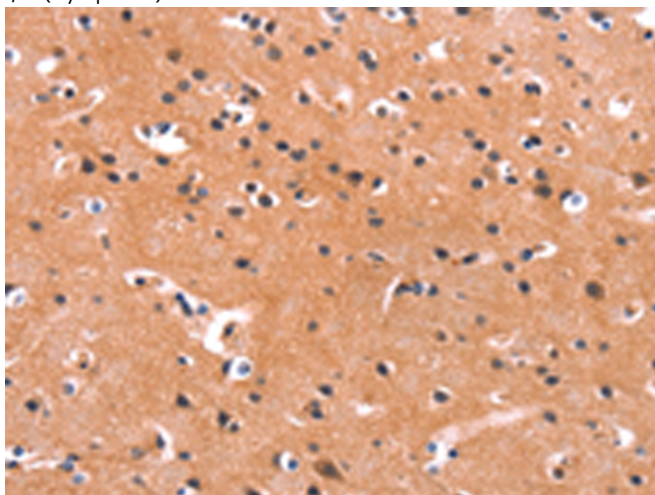
储存和运输: Store at -20°C. Avoid repeated freezing and thawing



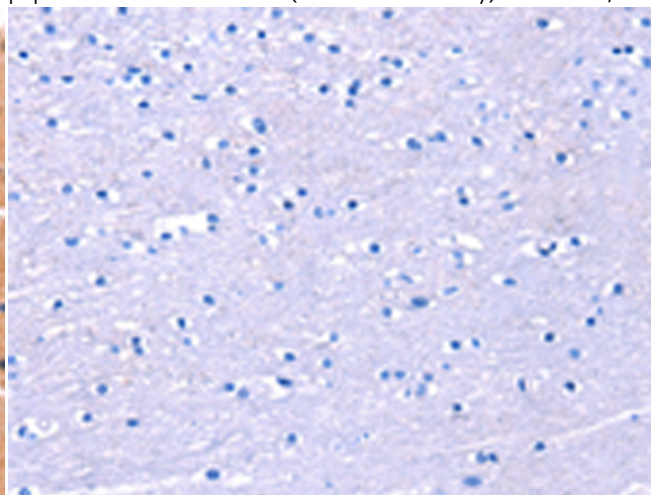
Immunohistochemistry analysis of paraffin embedded Human gastric cancer tissue using 220547(FEM1A Antibody) at a dilution of 1/20(Cytoplasm).



In comparison with the IHC on the left, the same paraffin-embedded Human gastric cancer tissue is first treated with the synthetic peptide and then with 220547(Anti-FEM1A Antibody) at dilution 1/20.



The image on the left is immunohistochemistry of paraffin-embedded Human brain tissue using 220547(Anti-FEM1A Antibody) at a dilution of 1/20.



In comparison with the IHC on the left, the same paraffin-embedded Human brain tissue is first treated with synthetic peptide and then with D261678(Anti-FEM1A Antibody) at dilution 1/20.



Product Description

Pioneering GTPase and Oncogene Product Development since 2010
