

FECH RABBIT PAB

货号: S222028

产品全名: FECH 兔多抗

基因符号: EPP; FCE

UNIPROT ID: P22830 (Gene Accession - NP_000131)

背景: The protein encoded by this gene is localized to the mitochondrion, where it catalyzes the insertion of the ferrous form of iron into protoporphyrin IX in the heme synthesis pathway. Mutations in this gene are associated with erythropoietic protoporphyria. Two transcript variants encoding different isoforms have been found for this gene. A pseudogene of this gene is found on chromosome 3.

抗原: Synthetic peptide of human FECH

经过测试的应用: ELISA, WB, IHC

推荐稀释比: IHC: 50-300;WB: 500-2000;ELISA: 5000-10000

种属反应性: Rabbit

克隆性: Rabbit Polyclonal

亚型: Immunogen-specific rabbit IgG

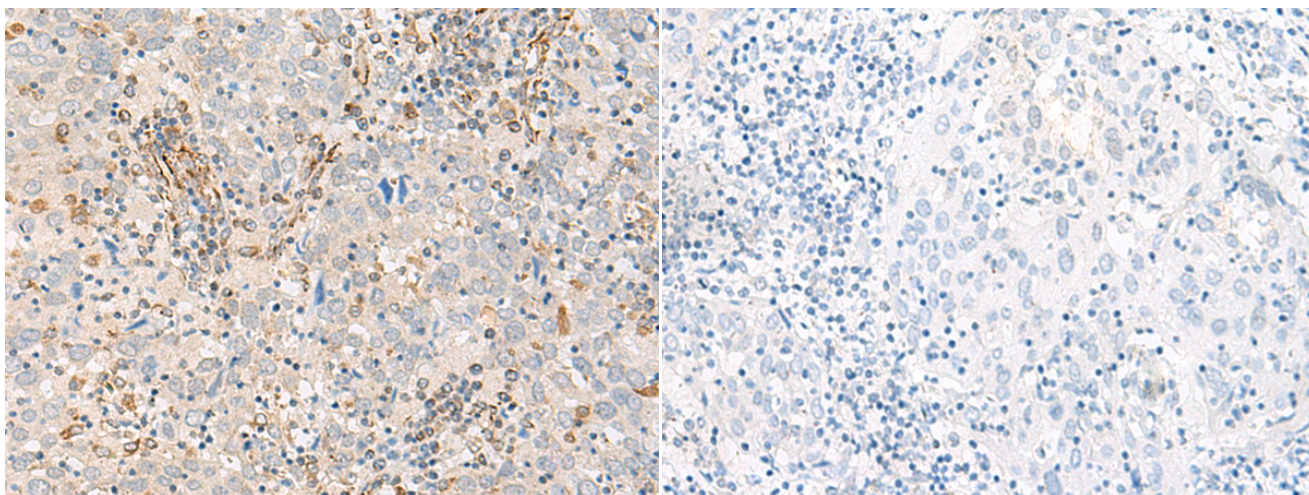
纯化: Antigen affinity purification

种属反应性: Human, Mouse

成分: PBS (without Mg²⁺ and Ca²⁺), pH 7.4, 150 mM NaCl, 0.05% Sodium Azide and 40% glycerol

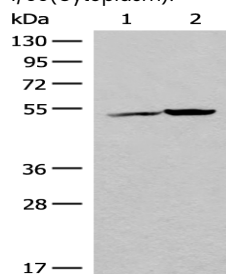
研究领域: Metabolism, Cardiovascular

储存和运输: Store at -20°C. Avoid repeated freezing and thawing



Immunohistochemistry analysis of paraffin embedded Human cervical cancer tissue using 222028(FECH Antibody) at a dilution of 1/55(Cytoplasm).

In comparison with the IHC on the left, the same paraffin-embedded Human cervical cancer tissue is first treated with the synthetic peptide and then with 222028(Anti-FECH Antibody) at dilution 1/55.



Gel: 8%SDS-PAGE, Lysate: 40 µg;
Lane 1-2: K562 cell and Human heart tissue lysates;
Primary antibody: 222028(FECH Antibody) at dilution 1/500;
Secondary antibody: Goat anti rabbit IgG at 1/8000 dilution;
Exposure time: 20 seconds