

FDFT1 RABBIT PAB

货号: S212805

产品全名: FDFT1 兔多抗

基因符号: SS; SQS; DGPT; ERG9

UNIPROT ID: P37268 (Gene Accession - BC009251)

背景: This gene encodes a membrane-associated enzyme located at a branch point in the mevalonate pathway. The encoded protein is the first specific enzyme in cholesterol biosynthesis, catalyzing the dimerization of two molecules of farnesyl diphosphate in a two-step reaction to form squalene.

抗原: Fusion protein of human FDFT1

经过测试的应用: ELISA, WB, IHC

推荐稀释比: IHC: 40-200;WB: 1000-5000;ELISA: 5000-10000

种属反应性: Rabbit

克隆性: Rabbit Polyclonal

亚型: Immunogen-specific rabbit IgG

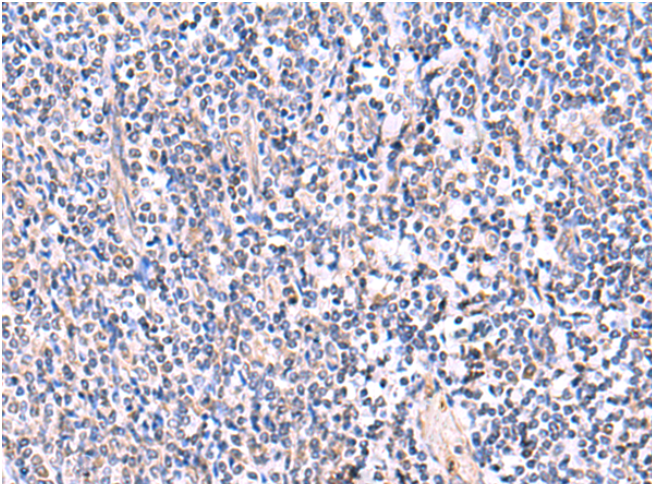
纯化: Antigen affinity purification

种属反应性: Human, Mouse, Rat

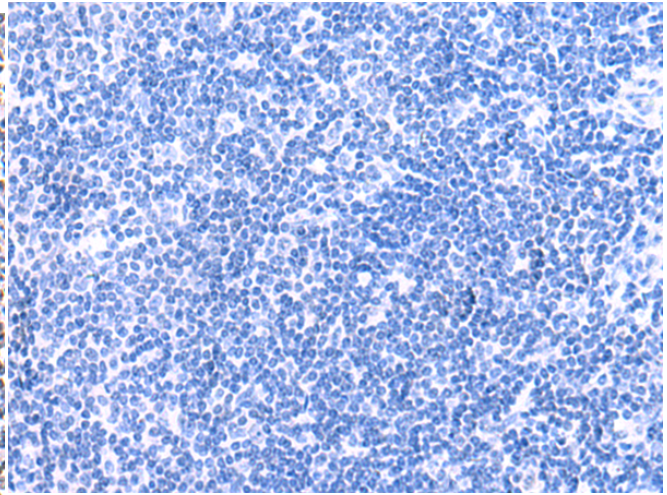
成分: PBS (without Mg²⁺ and Ca²⁺), pH 7.4, 150 mM NaCl, 0.05% Sodium Azide and 40% glycerol

研究领域: Cancer, Metabolism, Neuroscience, Cardiovascular

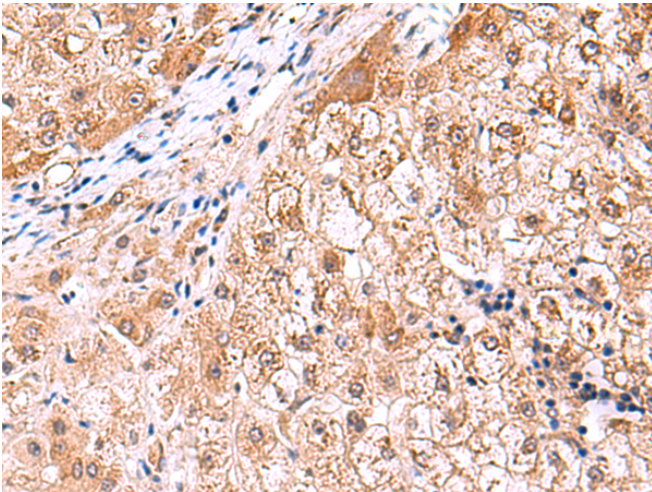
储存和运输: Store at -20°C. Avoid repeated freezing and thawing



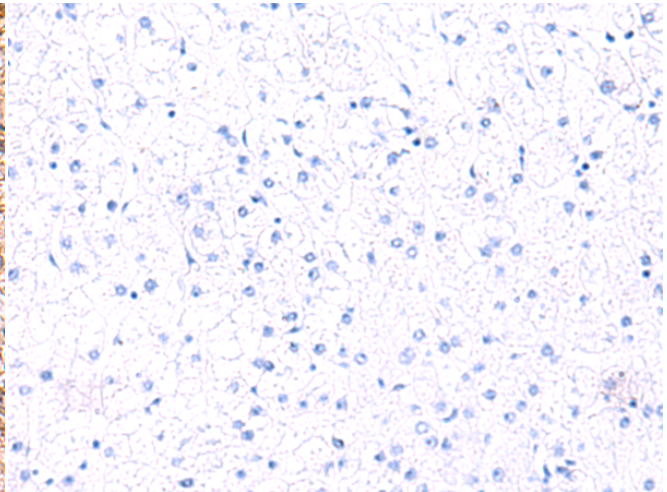
Immunohistochemistry analysis of paraffin embedded Human tonsil tissue using 212805(FDFT1 Antibody) at a dilution of 1/75(Cytoplasm).



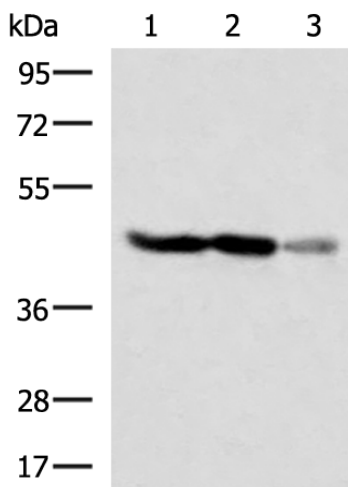
In comparison with the IHC on the left, the same paraffin-embedded Human tonsil tissue is first treated with the fusion protein and then with 212805(Anti-FDFT1 Antibody) at dilution 1/75.



The image on the left is immunohistochemistry of paraffin-embedded Human liver cancer tissue using 212805(Anti-FDFT1 Antibody) at a dilution of 1/75.



In comparison with the IHC on the left, the same paraffin-embedded Human liver cancer tissue is first treated with fusion protein and then with D125860(Anti-FDFT1 Antibody) at dilution 1/75.



Gel: 8%SDS-PAGE, Lysate: 40 µg;
Lane 1-3: HT29 and HepG2 cell, Human fetal brain tissue lysates;
Primary antibody: 212805(FDFT1 Antibody) at dilution 1/1000;
Secondary antibody: HRP-conjugated Goat anti rabbit IgG at 1/5000 dilution;
Exposure time: 10 seconds



Product Description

Pioneering GTPase and Oncogene Product Development since 2010
