

FCGR1A RABBIT PAB

货号: S221701

产品全名: FCGR1A 兔多抗

基因符号: CD64; FCRI; CD64A; IGFRI

UNIPROT ID: P12314 (Gene Accession - NP_000557)

背景: This gene encodes a protein that plays an important role in the immune response. This protein is a high-affinity Fc-gamma receptor. The gene is one of three related gene family members located on chromosome 1.

抗原: Synthetic peptide of human FCGR1A

经过测试的应用: ELISA, IHC

推荐稀释比: IHC: 30-150; ELISA: 5000-10000

种属反应性: Rabbit

克隆性: Rabbit Polyclonal

亚型: Immunogen-specific rabbit IgG

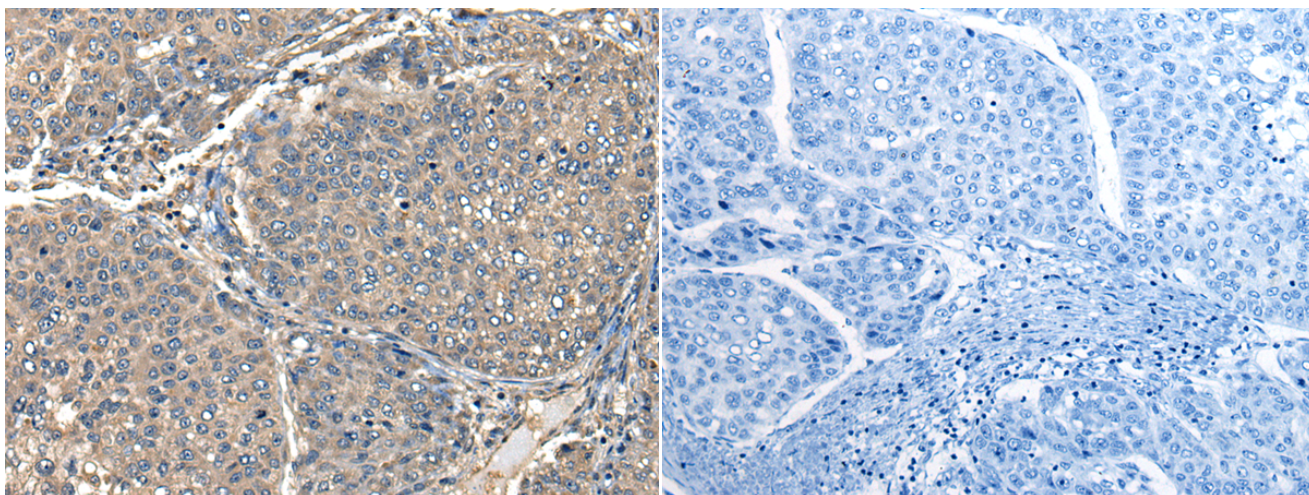
纯化: Antigen affinity purification

种属反应性: Human

成分: PBS (without Mg²⁺ and Ca²⁺), pH 7.4, 150 mM NaCl, 0.05% Sodium Azide and 40% glycerol

研究领域: Immunology

储存和运输: Store at -20°C. Avoid repeated freezing and thawing



Immunohistochemistry analysis of paraffin embedded Human liver cancer tissue using 221701(FCGR1A Antibody) at a dilution of 1/35(Cell membrane).

In comparison with the IHC on the left, the same paraffin-embedded Human liver cancer tissue is first treated with the synthetic peptide and then with 221701(Anti-FCGR1A Antibody) at dilution 1/35.