

FBXO42 RABBIT PAB

货号: S219439

产品全名: FBXO42 兔多抗

基因符号 JFK; Fbx42

UNIPROT ID: Q6P3S6 (Gene Accession - BC063864)

背景: Members of the F-box protein family, such as FBXO42, are characterized by an approximately 40-amino acid F-box motif. SCF complexes, formed by SKP1 (SKP1A; MIM 601434), cullin (see CUL1; MIM 603134), and F-box proteins, act as protein-ubiquitin ligases. F-box proteins interact with SKP1 through the F-box and they interact with ubiquitination targets through other protein interaction domains (Jin et al., 2004 [PubMed 15520277]).

抗原: Fusion protein of human FBXO42

经过测试的应用: ELISA, IHC

推荐稀释比: IHC: 100-200; ELISA: 5000-10000

种属反应性: Rabbit

克隆性: Rabbit Polyclonal

亚型: Immunogen-specific rabbit IgG

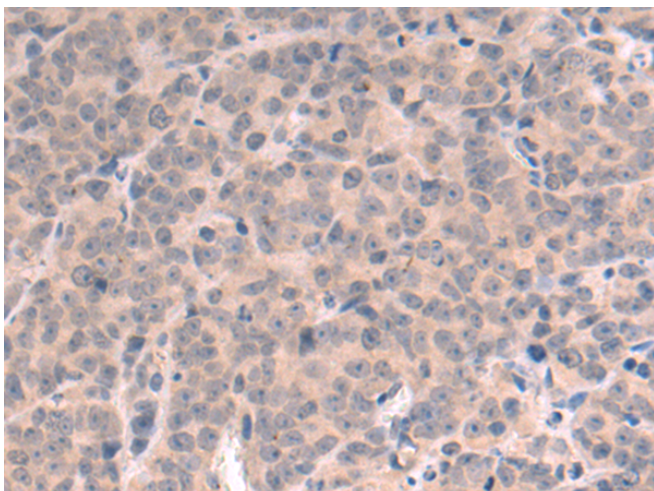
纯化: Antigen affinity purification

种属反应性: Human, Mouse

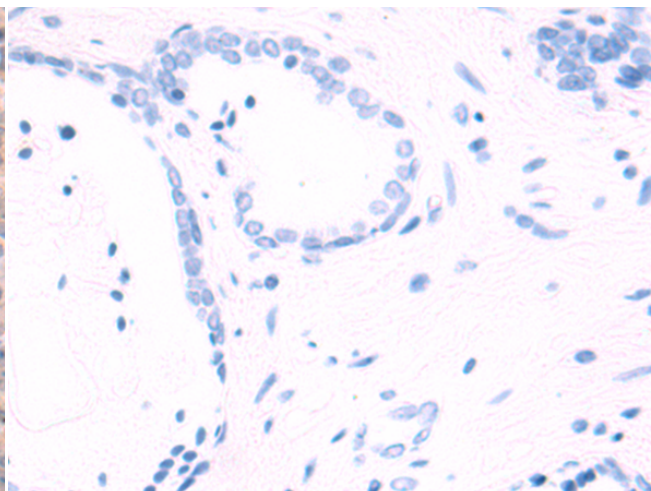
成分: PBS (without Mg²⁺ and Ca²⁺), pH 7.4, 150 mM NaCl, 0.05% Sodium Azide and 40% glycerol

研究领域: Cell Biology, Epigenetics and Nuclear Signaling

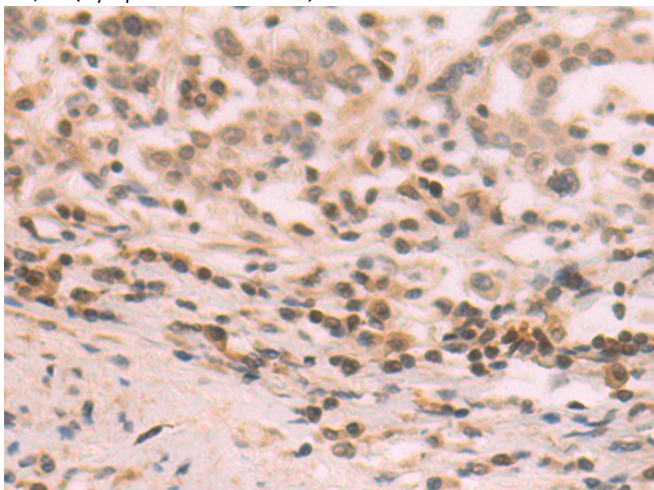
储存和运输: Store at -20°C. Avoid repeated freezing and thawing



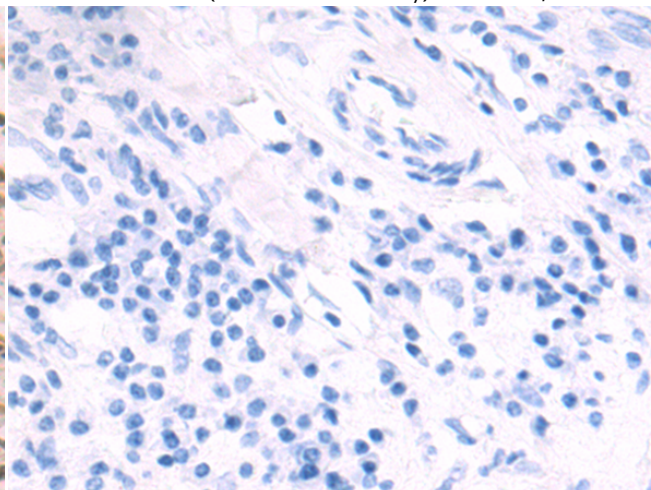
Immunohistochemistry analysis of paraffin embedded Human prostate cancer tissue using 219439(FBXO42 Antibody) at a dilution of 1/100(Cytoplasm and Nucleus).



In comparison with the IHC on the left, the same paraffin-embedded Human prostate cancer tissue is first treated with the fusion protein and then with 219439(Anti-FBXO42 Antibody) at dilution 1/100.



The image on the left is immunohistochemistry of paraffin-embedded Human gastric cancer tissue using 219439(Anti-FBXO42 Antibody) at a dilution of 1/100.



In comparison with the IHC on the left, the same paraffin-embedded Human gastric cancer tissue is first treated with fusion protein and then with D227038(Anti-FBXO42 Antibody) at dilution 1/100.



Product Description

Pioneering GTPase and Oncogene Product Development since 2010
