

FBN1 RABBIT PAB

货号: S219772

产品全名: FBN1 兔多抗

基因符号: FBN, SGS, WMS, MASS, MFS1, OCTD, SSKS, WMS2, ACMICD, ECTOL1, GPHYSD2

UNIPROT ID: P35555 (Gene Accession - NP_000129)

背景: This gene encodes a member of the fibrillin family. The encoded protein is a large, extracellular matrix glycoprotein that serve as a structural component of 10-12 nm calcium-binding microfibrils. These microfibrils provide force bearing structural support in elastic and nonelastic connective tissue throughout the body. Mutations in this gene are associated with Marfan syndrome, isolated ectopia lentis, autosomal dominant Weill-Marchesani syndrome, MASS syndrome, and Shprintzen-Goldberg craniosynostosis syndrome.

抗原: Synthetic peptide of human FBN1

经过测试的应用: ELISA, IHC

推荐稀释比: IHC: 50-200; ELISA: 1000-5000

种属反应性: Rabbit

克隆性: Rabbit Polyclonal

亚型: Immunogen-specific rabbit IgG

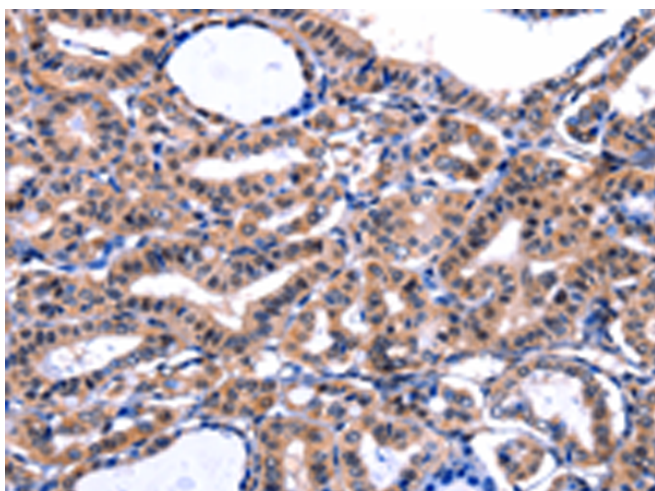
纯化: Antigen affinity purification

种属反应性: Human, Mouse

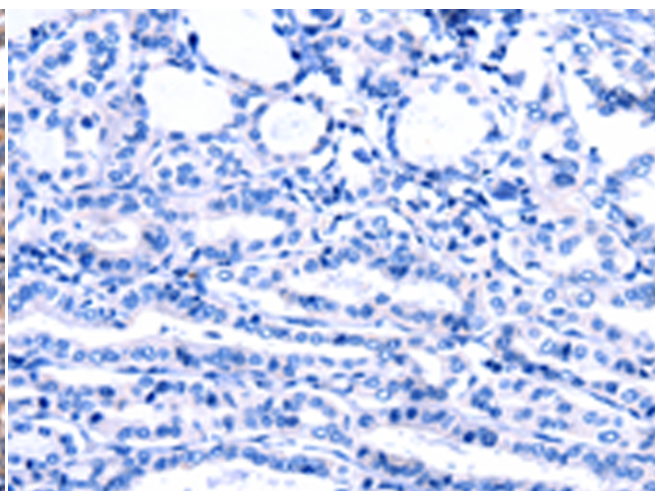
成分: PBS (without Mg²⁺ and Ca²⁺), pH 7.4, 150 mM NaCl, 0.05% Sodium Azide and 40% glycerol

研究领域: Signal Transduction

储存和运输: Store at -20°C. Avoid repeated freezing and thawing



Immunohistochemistry analysis of paraffin embedded Human thyroid cancer tissue using 219772(FBN1 Antibody) at a dilution of 1/47(Cytoplasm).



In comparison with the IHC on the left, the same paraffin-embedded Human thyroid cancer tissue is first treated with the synthetic peptide and then with 219772(Anti-FBN1 Antibody) at dilution 1/47.