

FBLN1 RABBIT PAB

货号: S219775

产品全名: FBLN1 兔多抗

基因符号: FBLN, FIBL1

UNIPROT ID: P23142 (Gene Accession - NP_001987)

背景: Fibulin 1 is a secreted glycoprotein that becomes incorporated into a fibrillar extracellular matrix. Calcium-binding is apparently required to mediate its binding to laminin and nidogen. It mediates platelet adhesion via binding fibrinogen. Four splice variants which differ in the 3' end have been identified. Each variant encodes a different isoform, but no functional distinctions have been identified among the four variants.

抗原: Synthetic peptide of human FBLN1

经过测试的应用: ELISA, IHC

推荐稀释比: IHC: Oct-50; ELISA: 1000-2000

种属反应性: Rabbit

克隆性: Rabbit Polyclonal

亚型: Immunogen-specific rabbit IgG

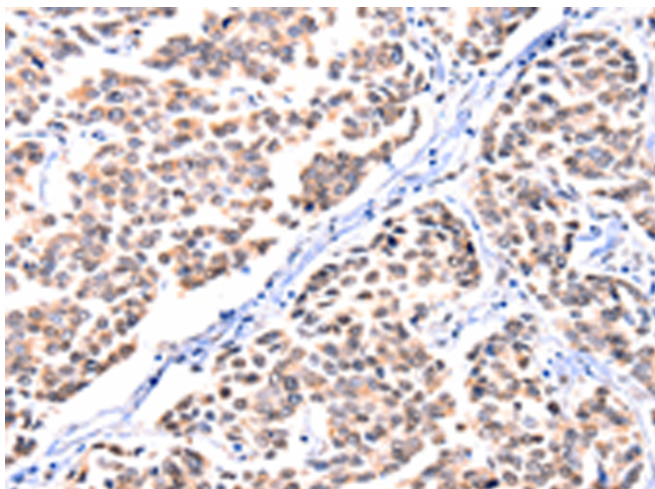
纯化: Antigen affinity purification

种属反应性: Human

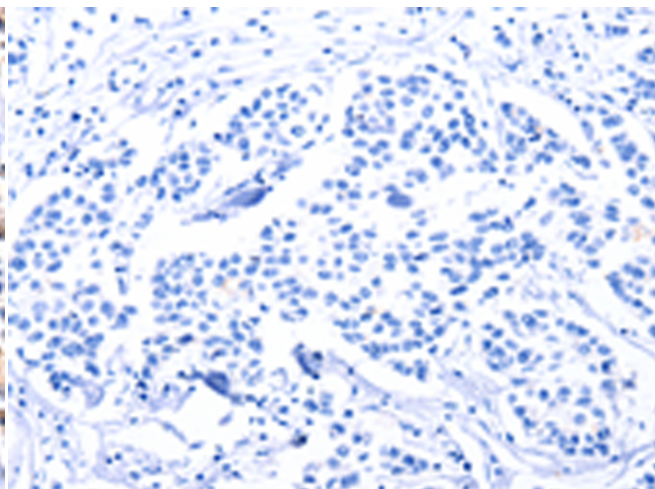
成分: PBS (without Mg²⁺ and Ca²⁺), pH 7.4, 150 mM NaCl, 0.05% Sodium Azide and 40% glycerol

研究领域: Signal Transduction, Cancer, Cardiovascular

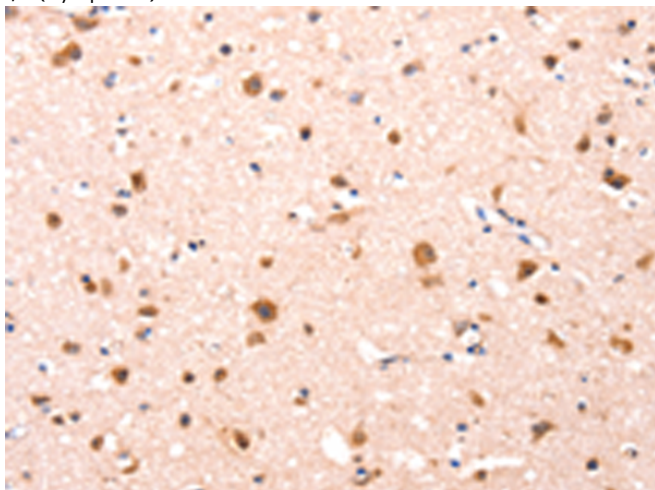
储存和运输: Store at -20°C. Avoid repeated freezing and thawing



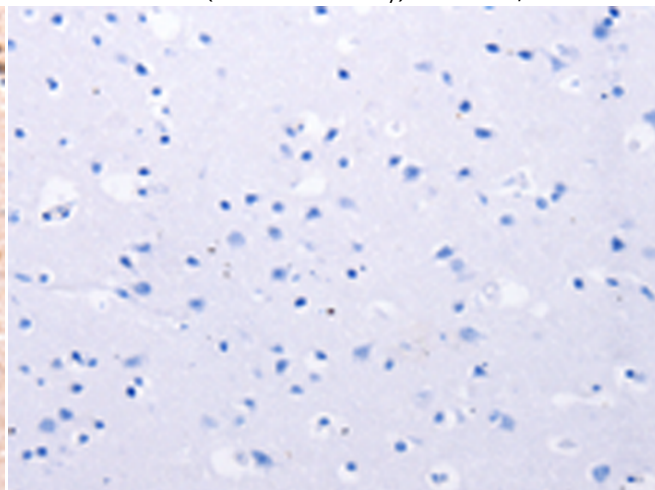
Immunohistochemistry analysis of paraffin embedded Human breast cancer tissue using 219775(FBLN1 Antibody) at a dilution of 1/12(Cytoplasm).



In comparison with the IHC on the left, the same paraffin-embedded Human breast cancer tissue is first treated with the synthetic peptide and then with 219775(Anti-FBLN1 Antibody) at dilution 1/12.



The image on the left is immunohistochemistry of paraffin-embedded Human brain tissue using 219775(Anti-FBLN1 Antibody) at a dilution of 1/12.



In comparison with the IHC on the left, the same paraffin-embedded Human brain tissue is first treated with synthetic peptide and then with D260331(Anti-FBLN1 Antibody) at dilution 1/12.



Product Description

Pioneering GTPase and Oncogene Product Development since 2010
