

## FAT4 RABBIT PAB

货号: S220249

产品全名: FAT4 兔多抗

基因符号: FATJ; FAT-J; CDHF14; CDHR11; HKLLS2; VMLDS2; NBLA00548

**UNIPROT ID:** Q6V0I7 (Gene Accession - NP\_078858)

**背景:** The protein encoded by this gene is a member of the protocadherin family. This gene may play a role in regulating planar cell polarity (PCP). Studies in mice suggest that loss of PCP signaling may cause cystic kidney disease, and mutations in this gene have been associated with Van Maldergem Syndrome 2. Alternatively spliced transcript variants have been noted for this gene.

**抗原:** Synthetic peptide of human FAT4

**经过测试的应用:** ELISA, IHC

**推荐稀释比:** IHC: 25-100; ELISA: 2000-5000

**种属反应性:** Rabbit

**克隆性:** Rabbit Polyclonal

**亚型:** Immunogen-specific rabbit IgG

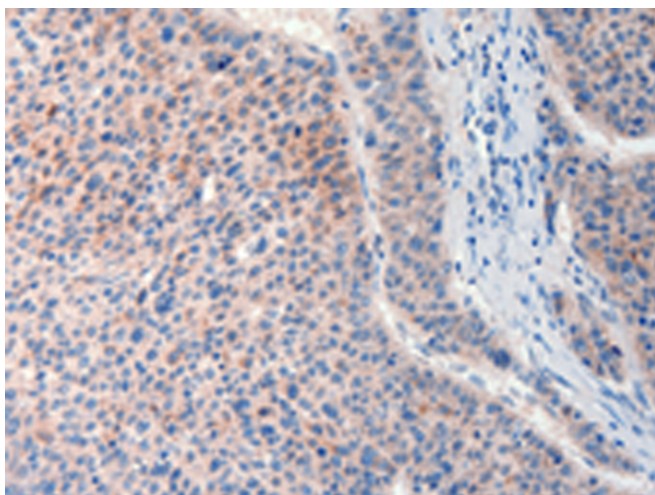
**纯化:** Antigen affinity purification

**种属反应性:** Human

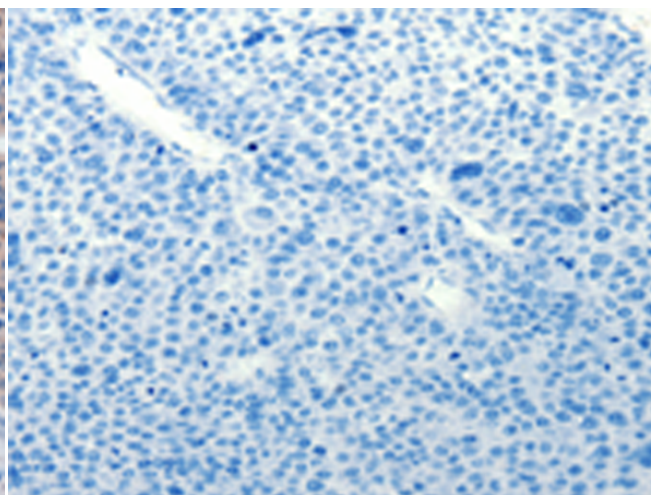
**成分:** PBS (without Mg<sup>2+</sup> and Ca<sup>2+</sup>), pH 7.4, 150 mM NaCl, 0.05% Sodium Azide and 40% glycerol

**研究领域:** Signal Transduction

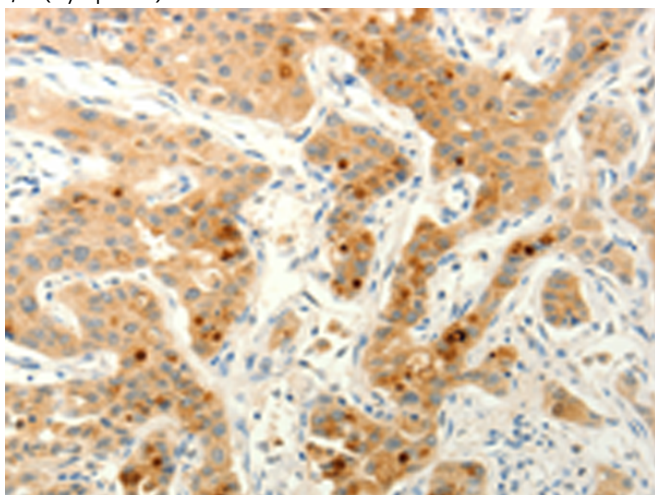
**储存和运输:** Store at -20°C. Avoid repeated freezing and thawing



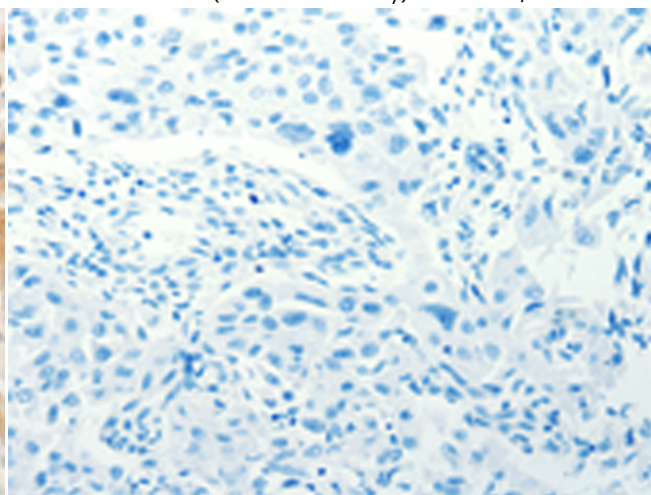
Immunohistochemistry analysis of paraffin embedded Human liver cancer tissue using 220249(FAT4 Antibody) at a dilution of 1/20(Cytoplasm).



In comparison with the IHC on the left, the same paraffin-embedded Human liver cancer tissue is first treated with the synthetic peptide and then with 220249(Anti-FAT4 Antibody) at dilution 1/20.



The image on the left is immunohistochemistry of paraffin-embedded Human lung cancer tissue using 220249(Anti-FAT4 Antibody) at a dilution of 1/20.



In comparison with the IHC on the left, the same paraffin-embedded Human lung cancer tissue is first treated with synthetic peptide and then with D261201(Anti-FAT4 Antibody) at dilution 1/20.



# Product Description

Pioneering GTPase and Oncogene Product Development since 2010

---