

FASTKD2 RABBIT PAB

货号: S217433

产品全名: FASTKD2 兔多抗

基因符号: COXPD44; KIAA0971

UNIPROT ID: Q9NYY8 (Gene Accession - BC001544)

背景: This gene encodes a protein that is localized in the mitochondrial inner compartment and that may play a role in mitochondrial apoptosis. Nonsense mutations have been reported to result in cytochrome c oxidase deficiency.

抗原: Fusion protein of human FASTKD2

经过测试的应用: ELISA, WB, IHC

推荐稀释比: IHC: 150-300;WB: 1000-5000;ELISA: 5000-10000

种属反应性: Rabbit

克隆性: Rabbit Polyclonal

亚型: Immunogen-specific rabbit IgG

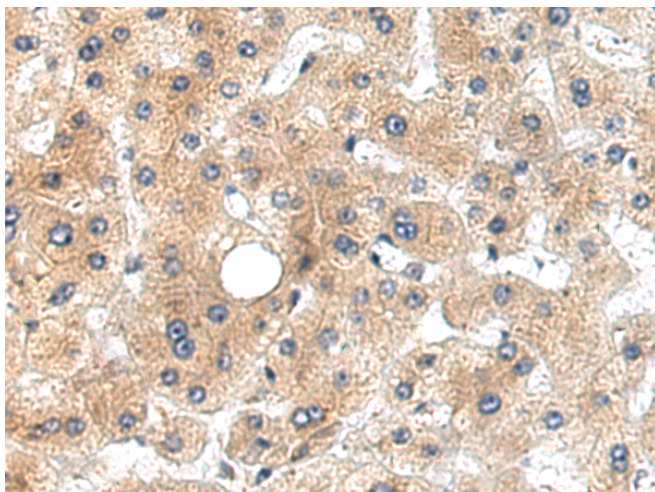
纯化: Antigen affinity purification

种属反应性: Human, Mouse

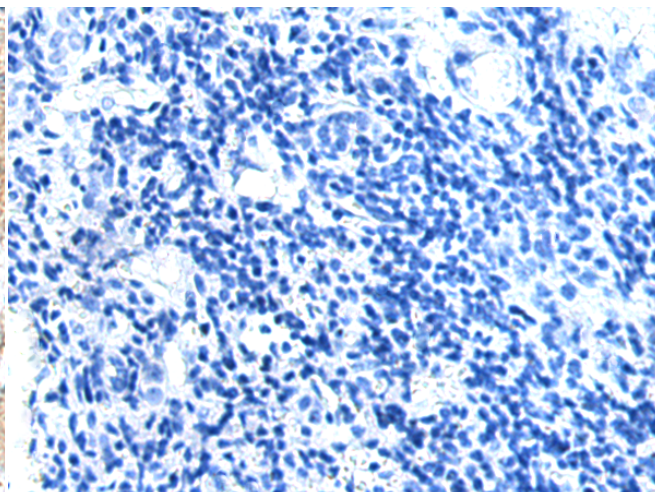
成分: PBS (without Mg²⁺ and Ca²⁺), pH 7.4, 150 mM NaCl, 0.05% Sodium Azide and 40% glycerol

研究领域: Cancer

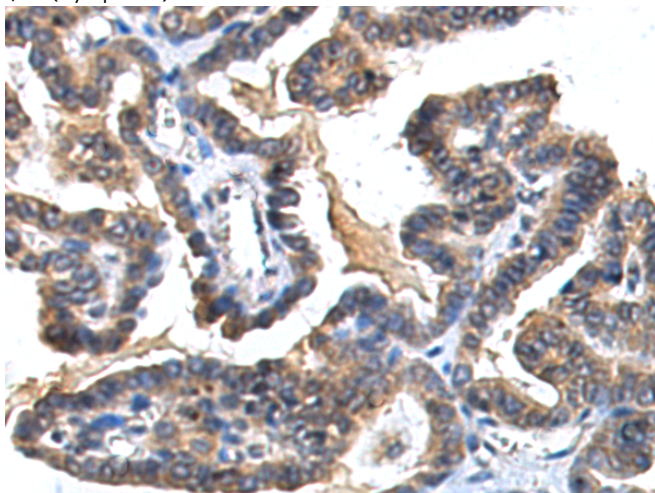
储存和运输: Store at -20°C. Avoid repeated freezing and thawing



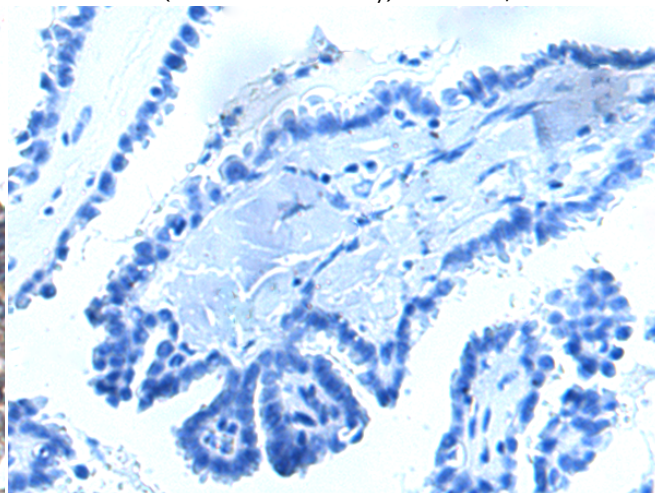
Immunohistochemistry analysis of paraffin embedded Human liver cancer tissue using 217433 (FASTKD2 Antibody) at a dilution of 1/150 (Cytoplasm).



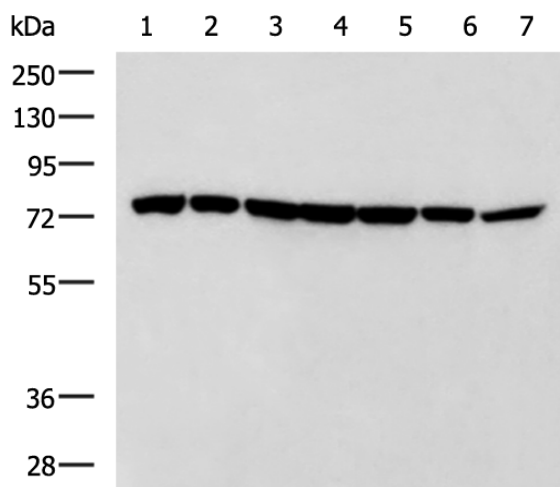
In comparison with the IHC on the left, the same paraffin-embedded Human liver cancer tissue is first treated with the fusion protein and then with 217433 (Anti-FASTKD2 Antibody) at dilution 1/150.



The image on the left is immunohistochemistry of paraffin-embedded Human thyroid cancer tissue using 217433 (Anti-FASTKD2 Antibody) at a dilution of 1/150.



In comparison with the IHC on the left, the same paraffin-embedded Human thyroid cancer tissue is first treated with fusion protein and then with D222351 (Anti-FASTKD2 Antibody) at dilution 1/150.



Gel: 8%SDS-PAGE, Lysate: 40 µg;
 Lane 1-7: RAMOS, Jurkat, HUVEC, HepG2, LOVO and Hela cell, Mouse heart tissue lysates;
 Primary antibody: 217433 (FASTKD2 Antibody) at dilution 1/1000;
 Secondary antibody: HRP-conjugated Goat anti rabbit IgG at 1/5000 dilution;
 Exposure time: 1 minute



Product Description

Pioneering GTPase and Oncogene Product Development since 2010
