

FAS RABBIT MAB

货号: N262210

产品全名: Fas 兔单克隆抗体

基因符号 FAS; ALPS1A; APO-1; APT1; CD95; FAS1; FASTM; TNFRSF6

UNIPROT ID: P25445

背景: Receptor for TNFSF6/FASLG. The adapter molecule FADD recruits caspase-8 to the activated receptor. The resulting death-inducing signaling complex (DISC) performs caspase-8 proteolytic activation which initiates the subsequent cascade of caspases (aspartate-specific cysteine proteases) mediating apoptosis.

抗原: A synthetic peptide of human Fas

经过测试的应用: WB,IHC-F,IHC-P,ICC/IF

推荐稀释比: WB: 1/500-1/1000 IHC: 1/50-1/100 IF: 1/50-1/200

种属反应性: Rabbit

克隆性: Rabbit Monoclonal

克隆编号: R02-817

分子量: Calculated MW: 38 kDa; Observed MW: 40-50 kDa

亚型: IgG

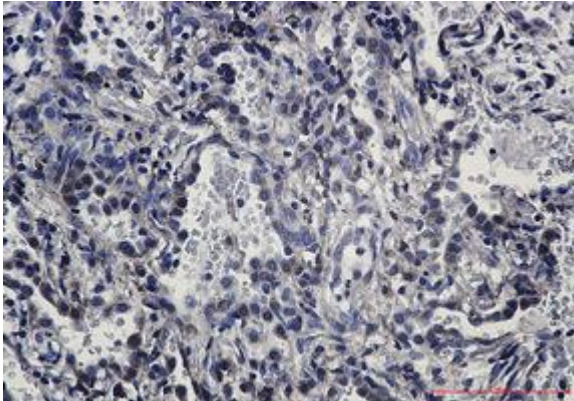
纯化: Affinity Purified

种属反应性: Human

成分: PBS (without Mg²⁺ and Ca²⁺), pH 7.3 containing 50% glycerol, 0.5% BSA and 0.02% sodium azide

研究领域: apoptosis - Caspase family

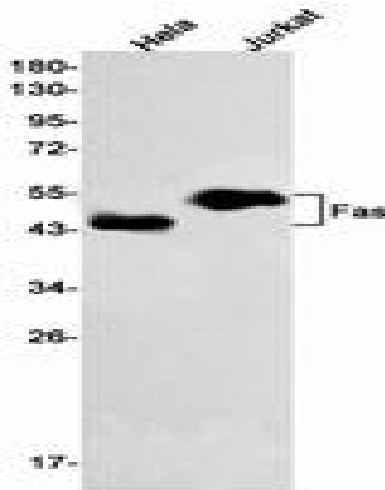
储存和运输: Store at -20°C. Avoid repeated freezing and thawing



Immunohistochemistry analysis of paraffin-embedded Human lung cancer tissue using Fas antibody. High-pressure and temperature Sodium Citrate pH 6.0 was used for antigen retrieval.



Immunocytochemistry analysis of Fas (green) in HL-60 using Fas antibody, and DAPI (blue).



Western blot analysis of Fas in HeLa, Jurkat lysates using Fas antibody.