

FAM50A RABBIT PAB

货号: S222011

产品全名: FAM50A 兔多抗

基因符号 9F; XAP5; HXC26; MRXSA; HXC-26; DXS9928E

UNIPROT ID: Q14320 (Gene Accession - NP_004690)

背景: This gene belongs to the FAM50 family. The encoded protein is highly conserved in length and sequence across different species. It is a basic protein containing a nuclear localization signal, and may function as a DNA-binding protein or a transcriptional factor.

抗原: Synthetic peptide of human FAM50A

经过测试的应用: ELISA, WB, IHC

推荐稀释比: IHC: 50-100;WB: 500-2000;ELISA: 5000-10000

种属反应性: Rabbit

克隆性: Rabbit Polyclonal

亚型: Immunogen-specific rabbit IgG

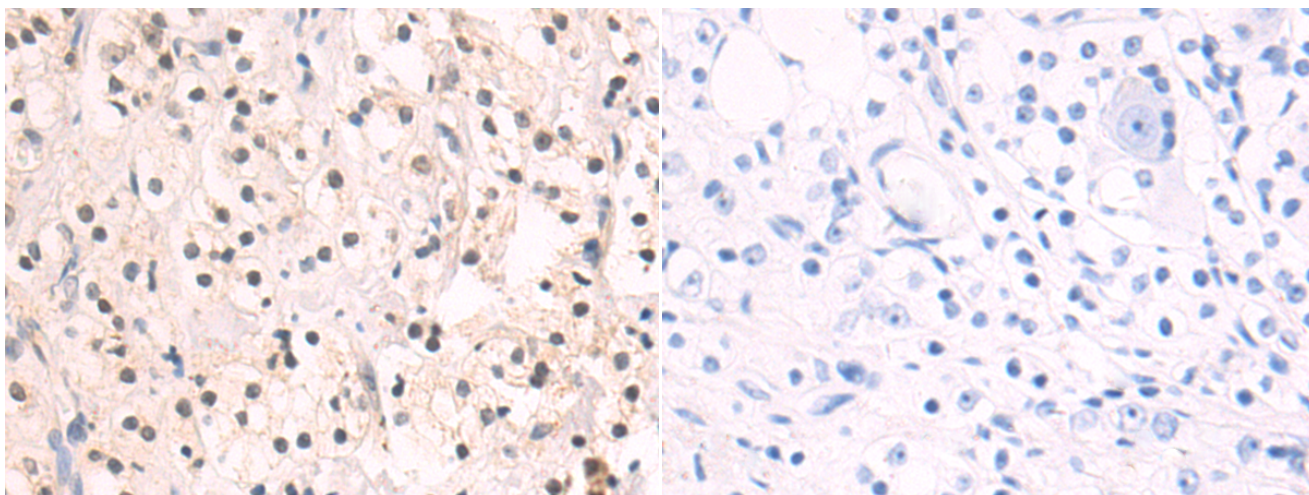
纯化: Antigen affinity purification

种属反应性: Human, Mouse

成分: PBS (without Mg²⁺ and Ca²⁺), pH 7.4, 150 mM NaCl, 0.05% Sodium Azide and 40% glycerol

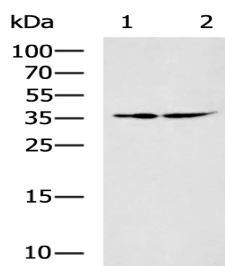
研究领域: Cell Biology

储存和运输: Store at -20°C. Avoid repeated freezing and thawing



Immunohistochemistry analysis of paraffin embedded Human prostate cancer tissue using 222011(FAM50A Antibody) at a dilution of 1/50(Nucleus).

In comparison with the IHC on the left, the same paraffin-embedded Human prostate cancer tissue is first treated with the synthetic peptide and then with 222011(Anti-FAM50A Antibody) at dilution 1/50.



Gel: 8%SDS-PAGE, Lysate: 40 µg;

Lane 1-2: HUVEC and Jurkat cell lysates;

Primary antibody: 222011(FAM50A Antibody) at dilution 1/800;

Secondary antibody: HRP-conjugated Goat anti rabbit IgG at 1/5000 dilution;

Exposure time: 30 seconds